

# **Ruby**

## **The Montana Mine Becomes the Largest Producer of Lead and Zinc in the State of Arizona**

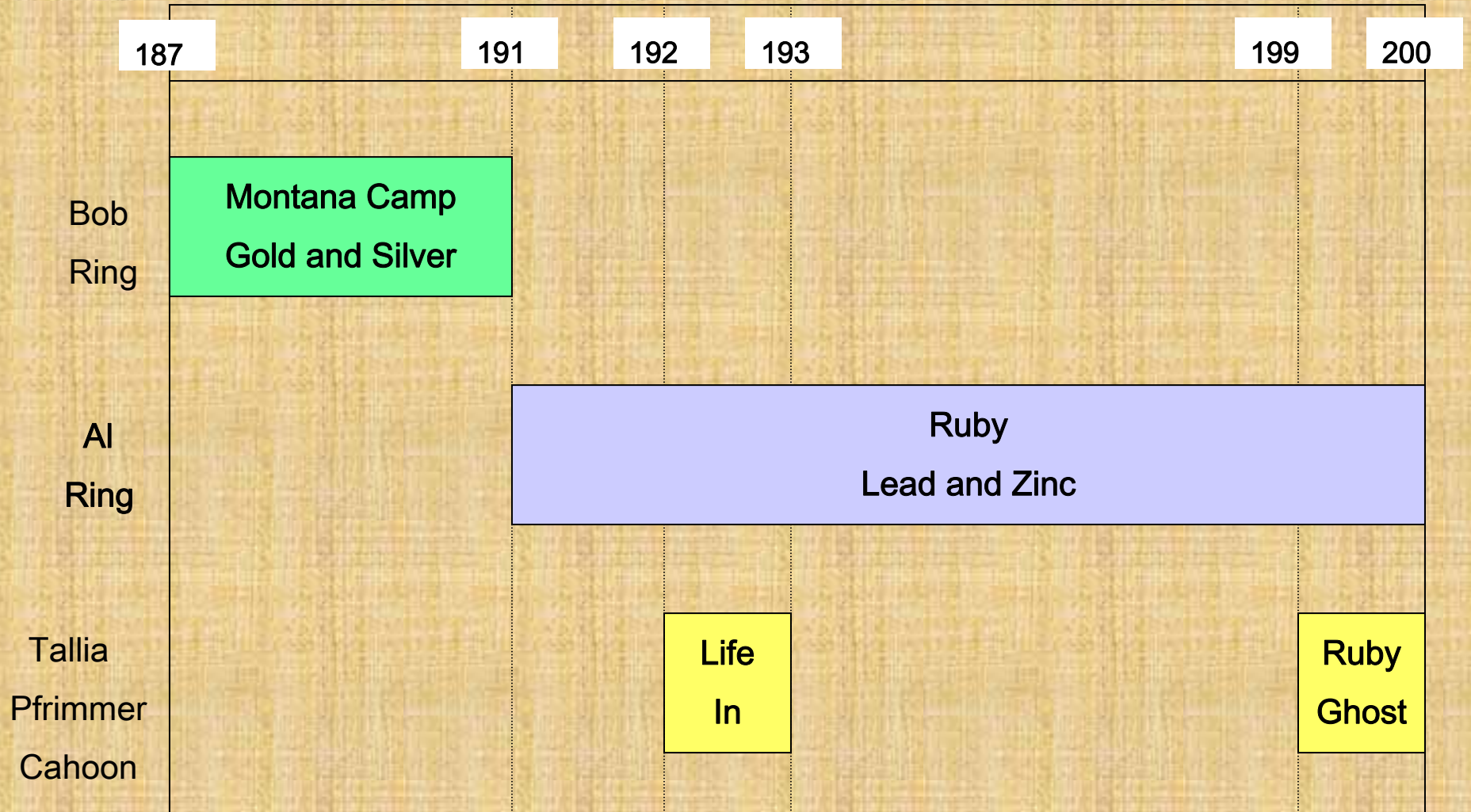
New Mexico - Arizona Joint History Convention  
Las Cruces, New Mexico

12 April 2002

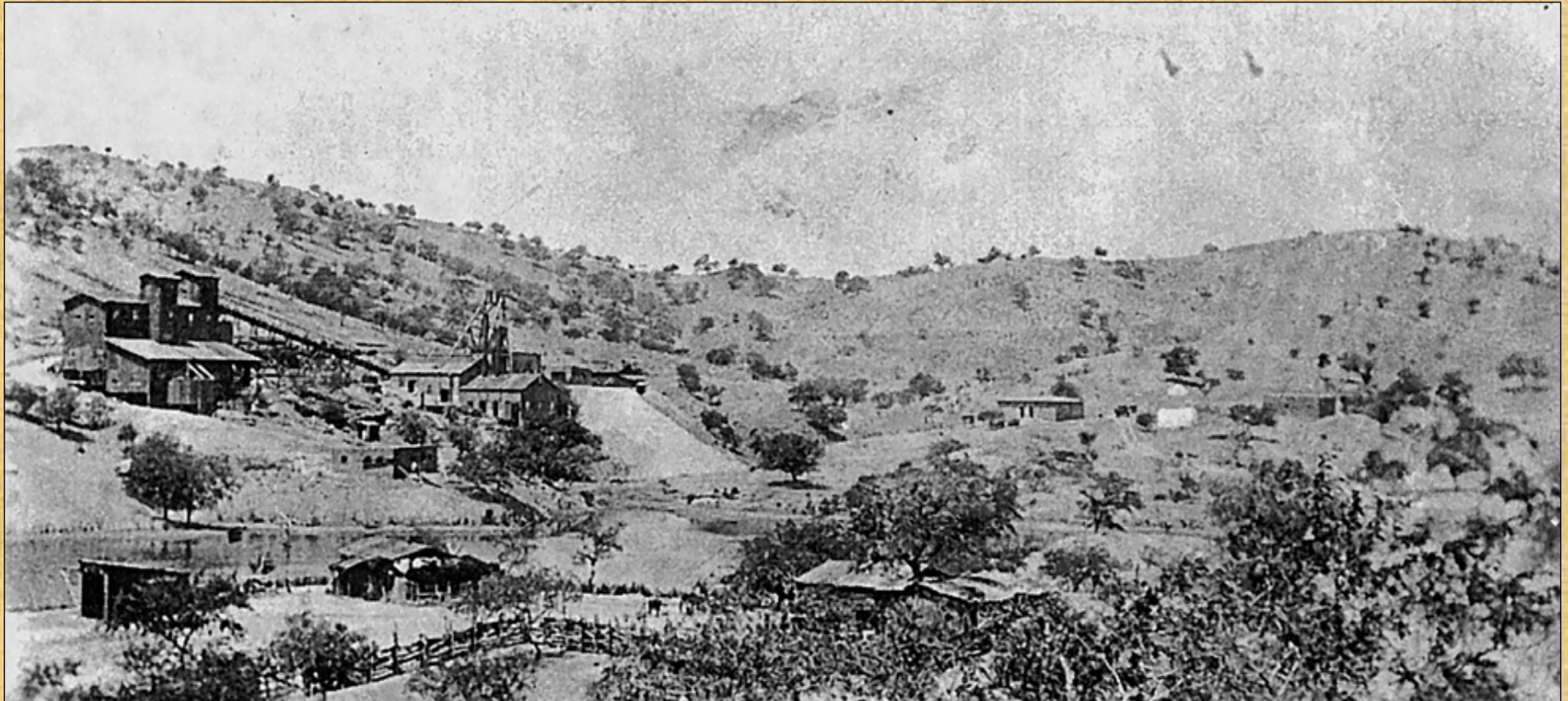


**Al Ring**  
520-529-0910  
ringal@comcast.net

# Ruby Papers Roadmap



# Ruby in 1917





**Phil Clarke**

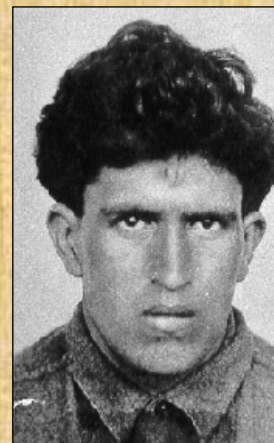
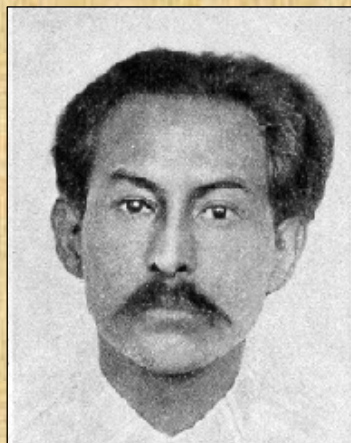


**Ruby's General Store  
Site of Murders in 1920 and 1921**





# Pearson Murderers and Posse



# Timeline of Fraser/Pearson Murder Events

Date	Event
Feb. 27, 1920	Alexander and John Frasier killed at Ruby store. Bandits Ezequiel <b>Lara</b> & Manuel <b>Garcia</b> are identified as killers.
(Unknown)	<b>Garcia</b> kills Deputy Holliday and Deputy McClure kills <b>Garcia</b> in western "shootouts."
Aug. 26, 1921	Seven bandits kill Mr. and Mrs. Frank Pearson, wound Miss Elizabeth Purcell. Leaders of bandits are Manuel <b>Martinez</b> and Placido <b>Silvas</b> .
Sept. 2, 1921	<b>Lara</b> reported in prison at Hermosillo, Sonora for another killing.
Dec. 1921	<b>Silvas</b> (captured earlier) goes on trial; convicted of killing Pearsons. Given life in prison.
Dec. 1921	<b>Martinez</b> confesses and names all seven Pearson bandits. Five are never captured.
May 18, 1922	<b>Martinez</b> convicted of murder, sentenced to hang Aug. 18, 1922.
July 13, 1922	Sheriff George White and Deputy Leonard A. Smith killed in car crash outside Tucson while transporting <b>Silvas</b> and <b>Martinez</b> to Florence prison. Both prisoners escape.
July 18, 1922	<b>Silvas</b> and <b>Martinez</b> recaptured by Sheriff Harry Saxons about 2 ½ miles southeast of Amado.
Aug. 10, 1923	<b>Martinez</b> hanged at Florence prison.
Dec. 3, 1928	<b>Silvas</b> escapes again – never caught.

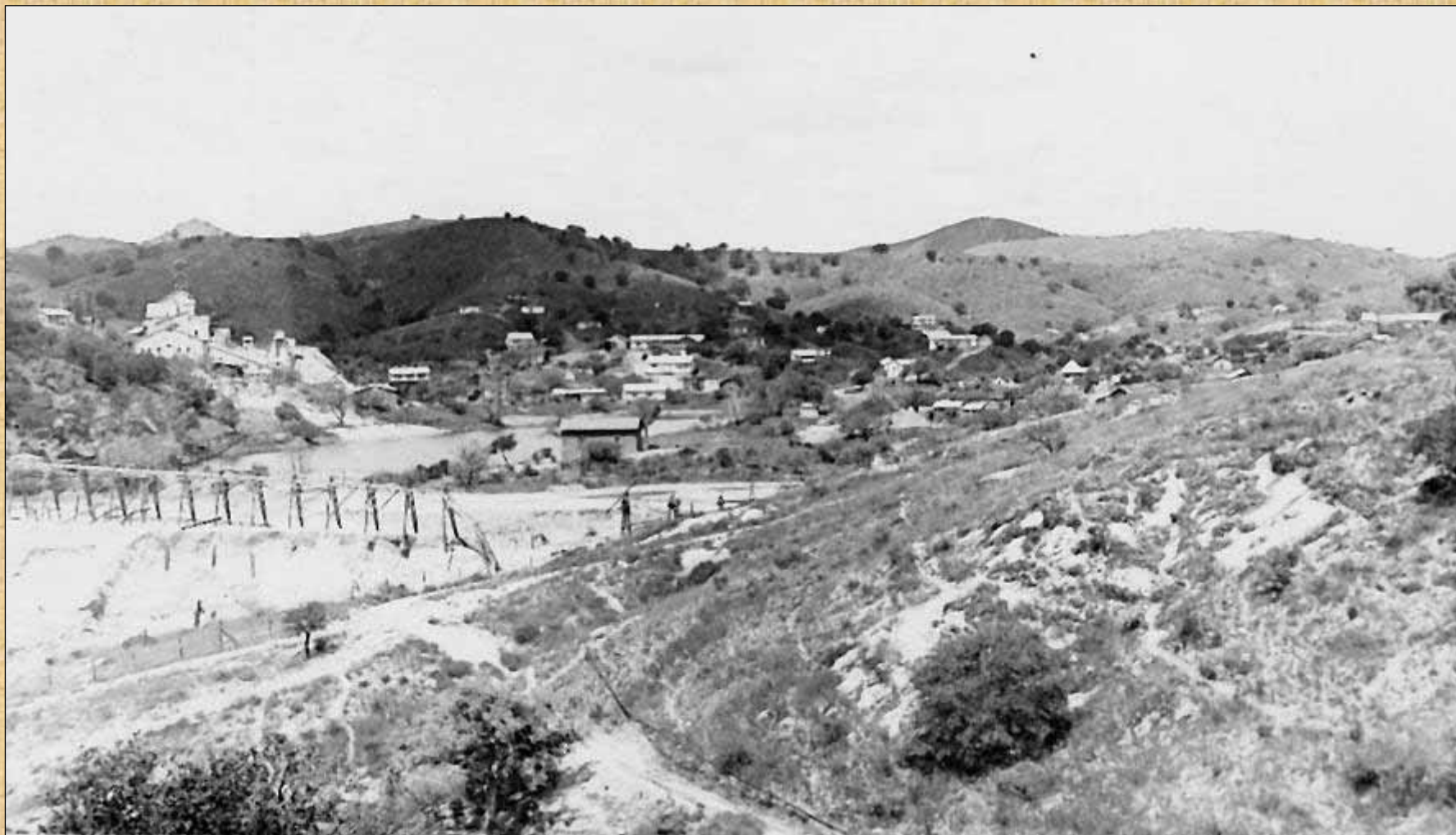


# Timeline of Fraser/Pearson Murder Events

Date	Event
Feb. 27, 1920	Alexander and John Frasier killed at Ruby store. Bandits Ezequiel <b>Lara</b> & Manuel <b>Garcia</b> are identified as killers.
(Unknown)	<b>Garcia</b> kills Deputy Holliday and Deputy McClure kills <b>Garcia</b> in western "shootouts."
Aug. 26, 1921	Seven bandits kill Mr. and Mrs. Frank Pearson, wound Miss Elizabeth Purcell. Leaders of bandits are Manuel <b>Martinez</b> and Placido <b>Silvas</b> .
Sept. 2, 1921	<b>Lara</b> reported in prison at Hermosillo, Sonora for another killing.
Dec. 1921	<b>Silvas</b> (captured earlier) goes on trial; convicted of killing Pearsons. Given life in prison.
Dec. 1921	<b>Martinez</b> confesses and names all seven Pearson bandits. Five are never captured.
May 18, 1922	<b>Martinez</b> convicted of murder, sentenced to hang Aug. 18, 1922.
July 13, 1922	Sheriff George White and Deputy Leonard A. Smith killed in car crash outside Tucson while transporting <b>Silvas</b> and <b>Martinez</b> to Florence prison. Both prisoners escape.
July 18, 1922	<b>Silvas</b> and <b>Martinez</b> recaptured by Sheriff Harry Saxons about 2 ½ miles southeast of Amado.
Aug. 10, 1923	<b>Martinez</b> hanged at Florence prison.
Dec. 3, 1928	<b>Silvas</b> escapes again – never caught.

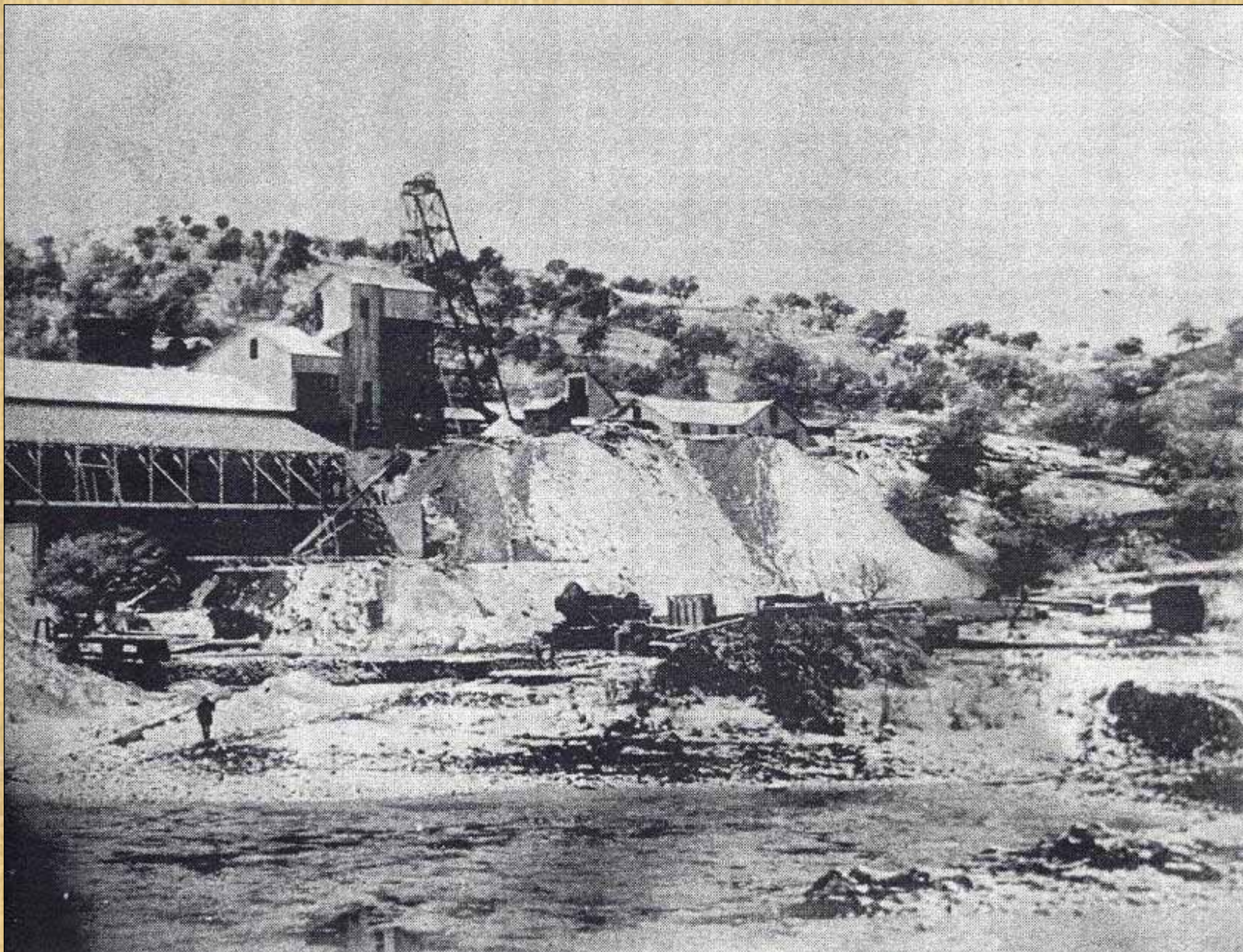


## Ruby – Late 1920s





## Montana Mill - 1928



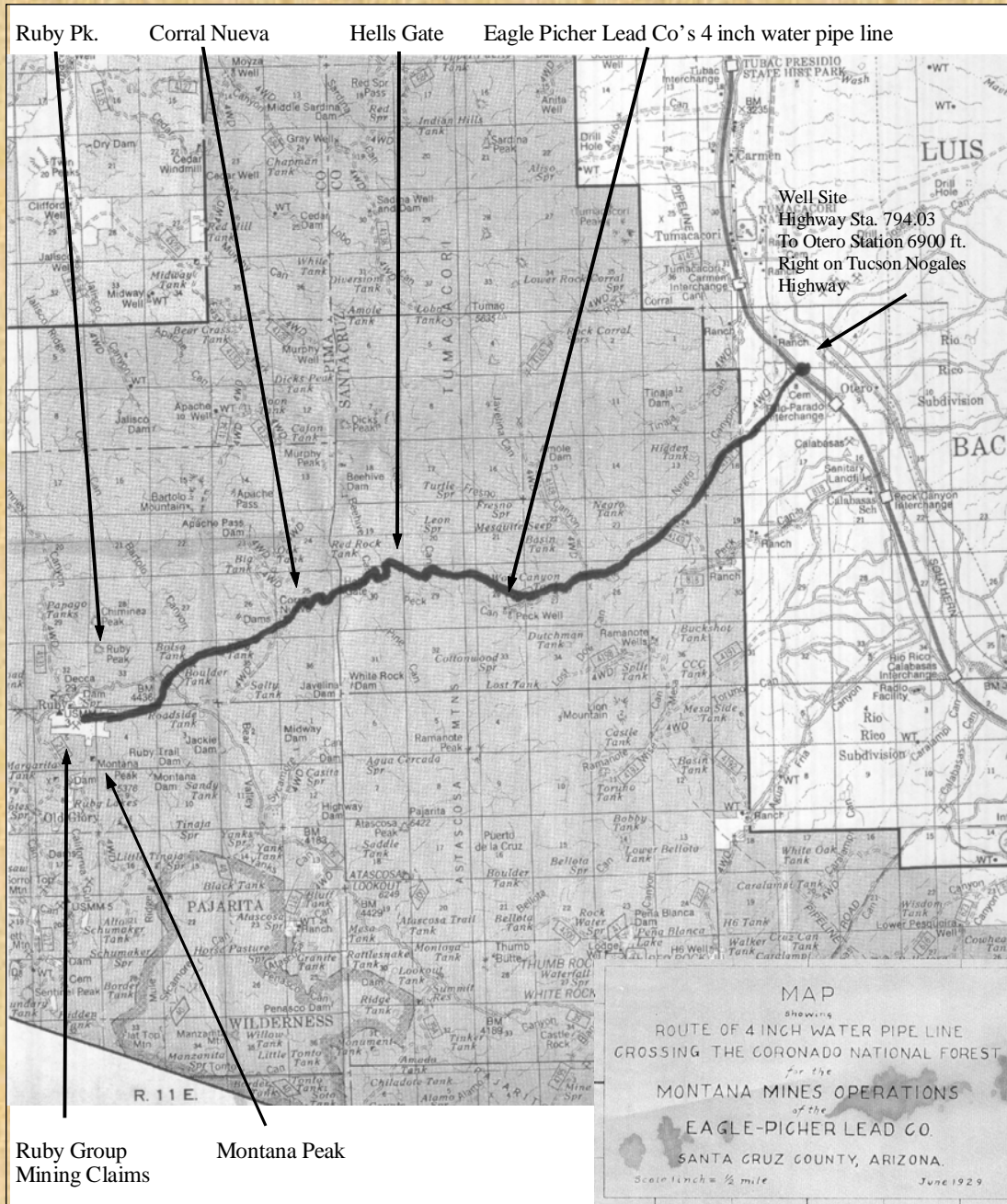


## Laying the Pipeline - 1929





# 17-Mile Pipeline Route





## Montana Mill - 1934



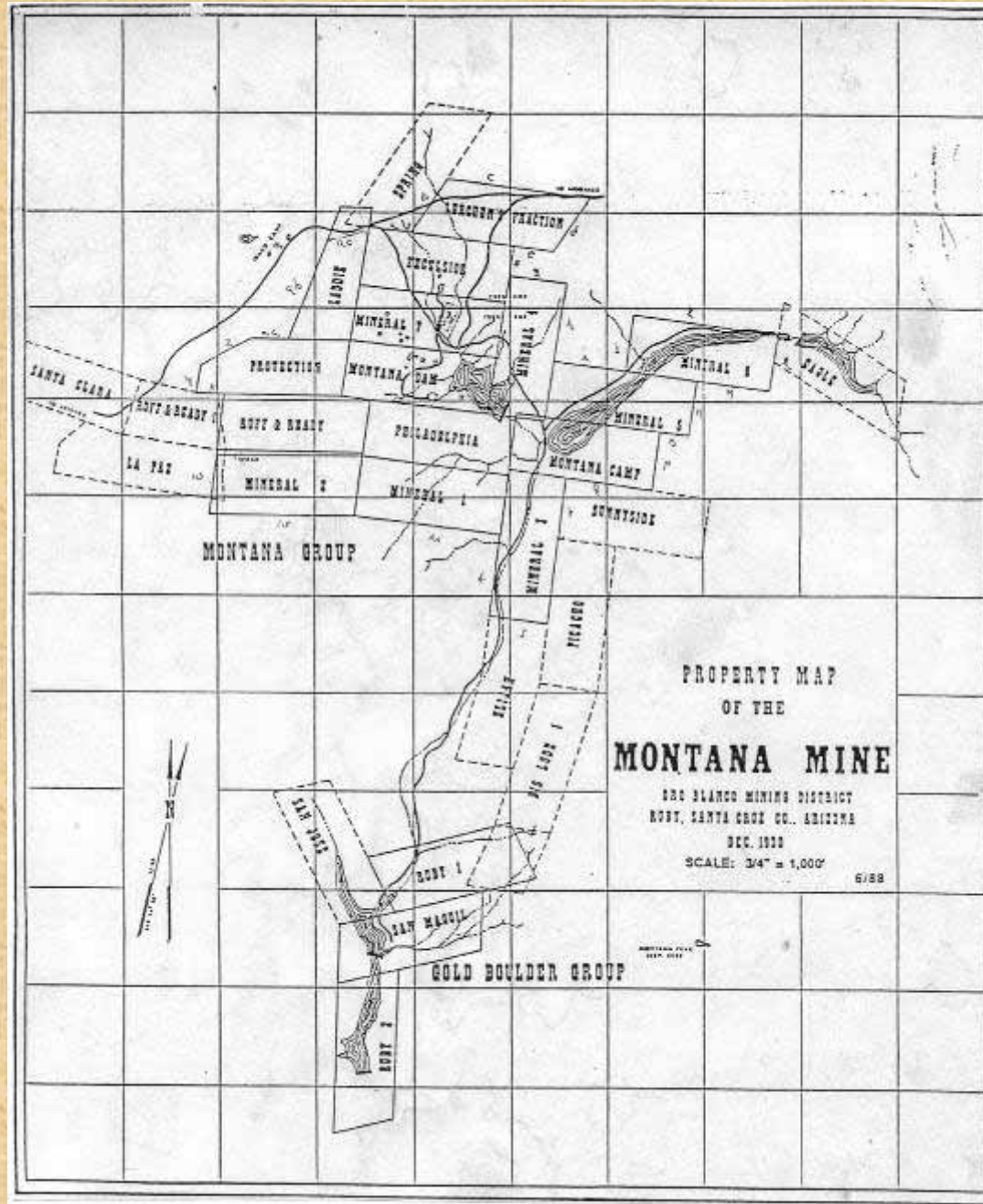


# Ruby - 1938





# Montana Mine Group - Map



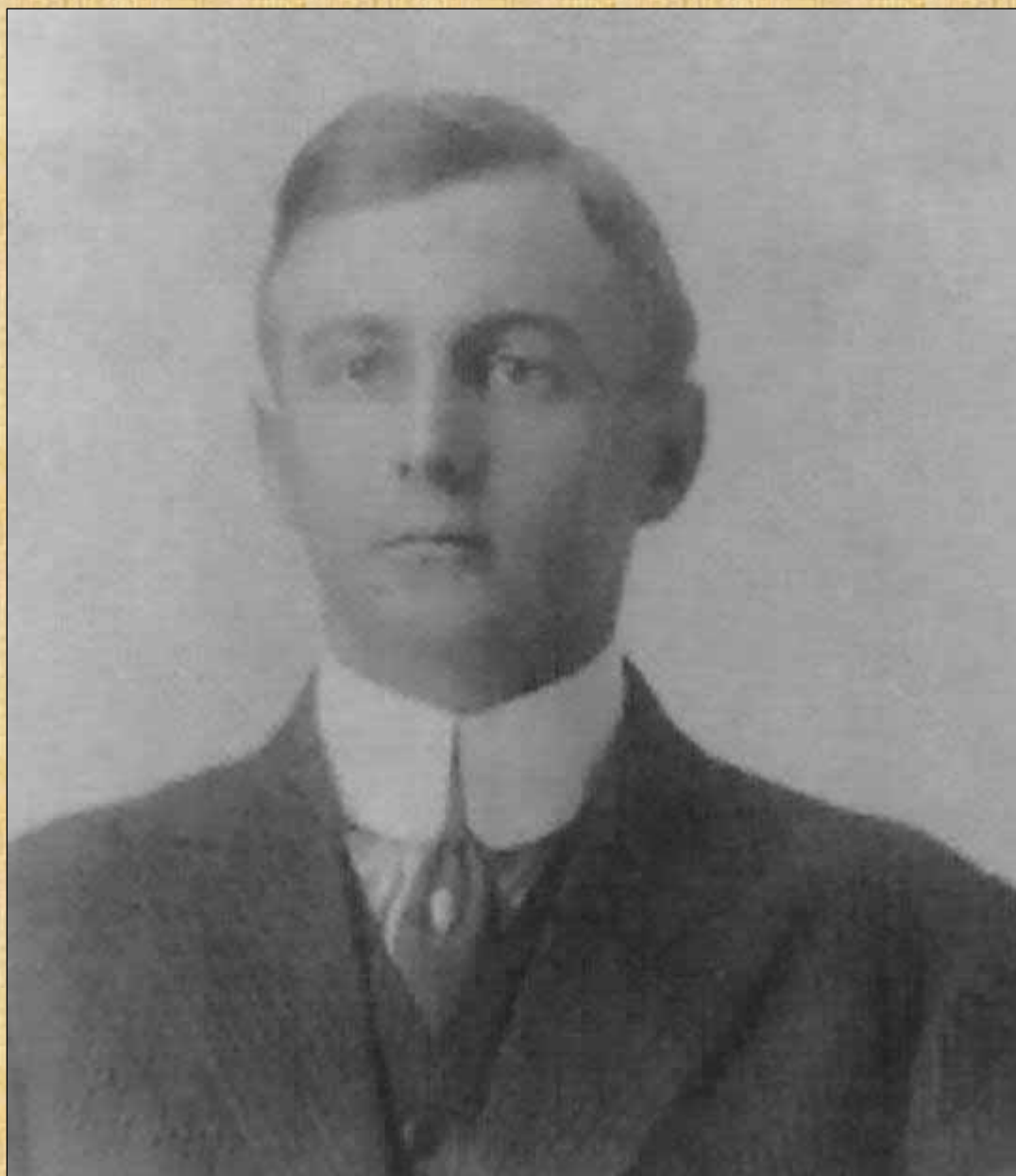
# The Mining Boom Ended

- By 1940 the mining boom was over
- The population of Ruby in 1940 was 1,100, but quickly declined
- Ruby's Post Office closed in 1941
- The mill and 400-ton flotation system were dismantled and reinstalled in Sahuarita

**Total value of Eagle-Picher production  
is estimated at  
\$10,000,000  
(1940 dollars)**



# Hugo Miller



# Ruby Becomes a Ghost Town

**1961** – Ruby (with 19 patented mines) is sold to private interests

**1960s** – Forest Service evicts “hippies”

**1975** – Ruby listed in National Historic Register

**1984** – Pima Community College starts tours of Ruby

**1993** – Start of regular reunions of former Ruby residents

**2002** – Ruby the ghost town is rapidly deteriorating

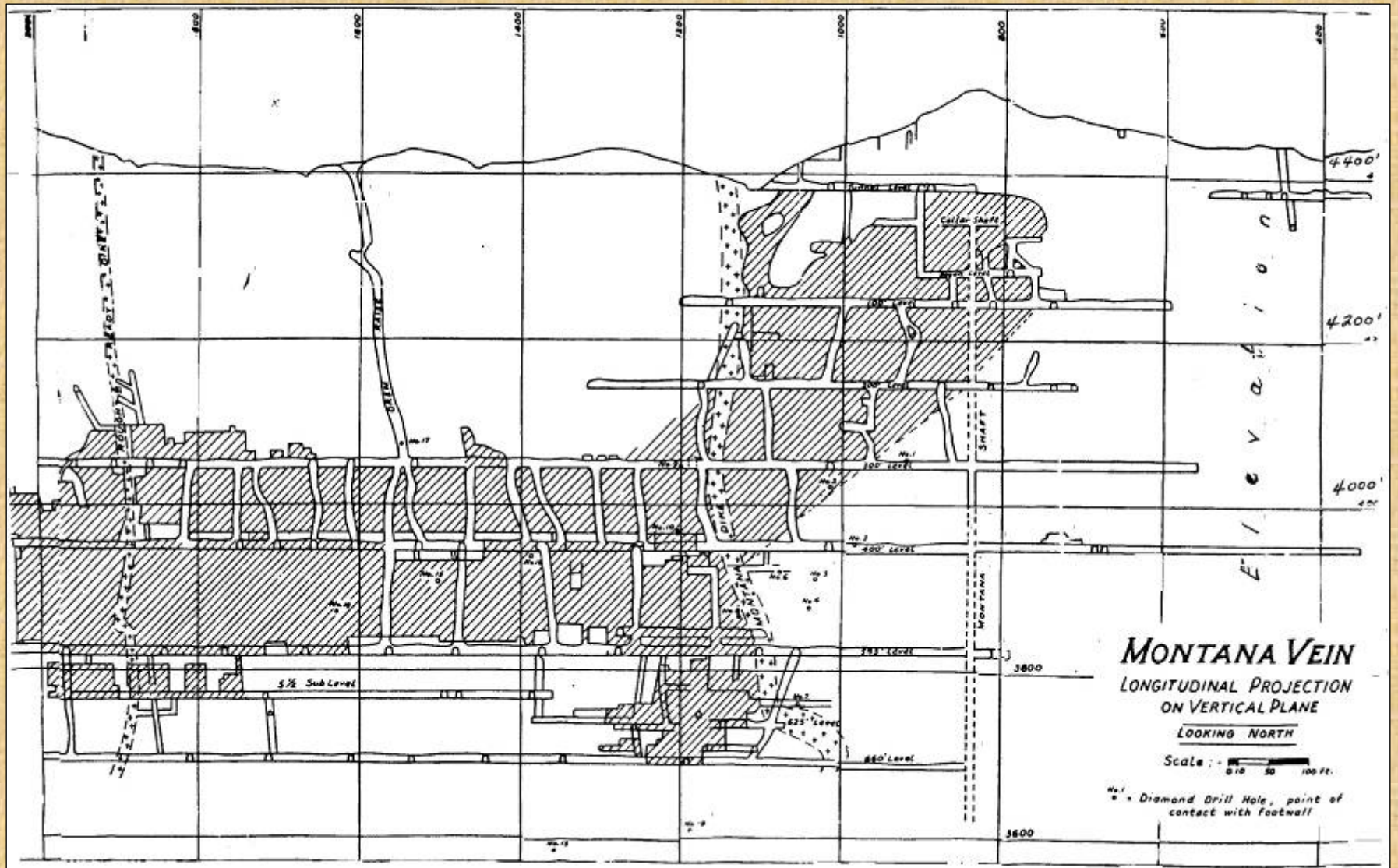
- 700,000 tons of mining tailings



**Posted at Ruby in 1963**

**No Trespassing  
Women and Children Will  
Be Winged,  
Men Will Be Gut Shot,  
Survivors Will Be  
Prosecuted**

# Montana Vein





# Montana Mine Group - List

No.	Mine	Original Location Date	Located By	Patent Date	Patented By
1	Philadelphia	May 13, 1889	W. J. Cheyney	April 23, 1907	Louis Zeckendorf
2	Montana Camp	January 4, 1893	George Cheyney		
3	Montana Dam	November 2, 1894	George Cheyney		
4	Mineral No. 1	December 29, 1898	J. N. Curtis		
5	Mineral No. 2	December 29, 1898	J. N. Curtis		
6	Mineral No. 3	December 29, 1898	J. N. Curtis		
7	Mineral No. 4	December 29, 1898	J. N. Curtis		
8	Mineral No. 5	November 6, 1899	J. N. Curtis		
9	Mineral No. 6	November 6, 1899	J. N. Curtis		
10	Mineral No. 7	November 6, 1899	J. N. Curtis		
11	San Miguil	February 6, 1878	J. J. Miller	February 3, 1933	Eagle-Picher Company
12	Protection	April 16, 1894	George G. Mullins		
13	Ruff and Ready	November 21, 1894	O. A. Hyatt		
14	Excelsior	March 7, 1895	A. E. Bogan, et al		
15	Ruby No. 1	December 8, 1915	C. A. Hartman		
16	Ruby No. 2	December 8, 1915	C. A. Hartman		
17	Laddie	January 13, 1928	Sam J. Hayhurst, et al		
18	Spear	January 13, 1928	Sam J. Hayhurst, et al		
19	Lerchen's Fraction	February 17, 1928	Frank H. Lerchen		