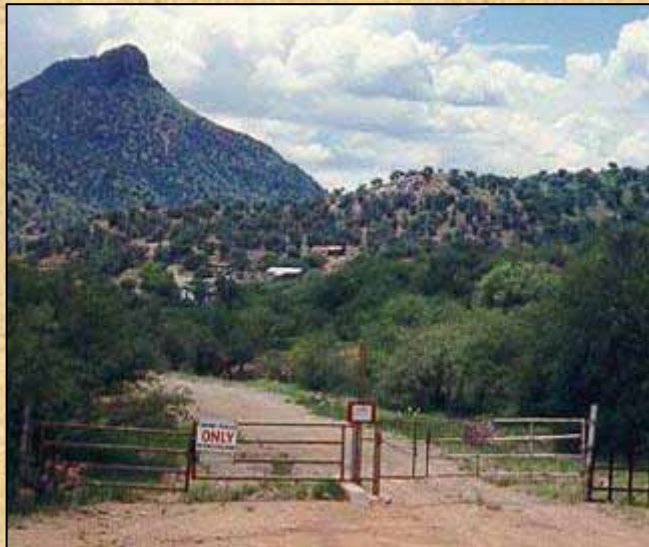


# The Private Life of Ruby, Mining Ghost Town

Arizona History Convention  
Safford, Arizona

April 24, 2004



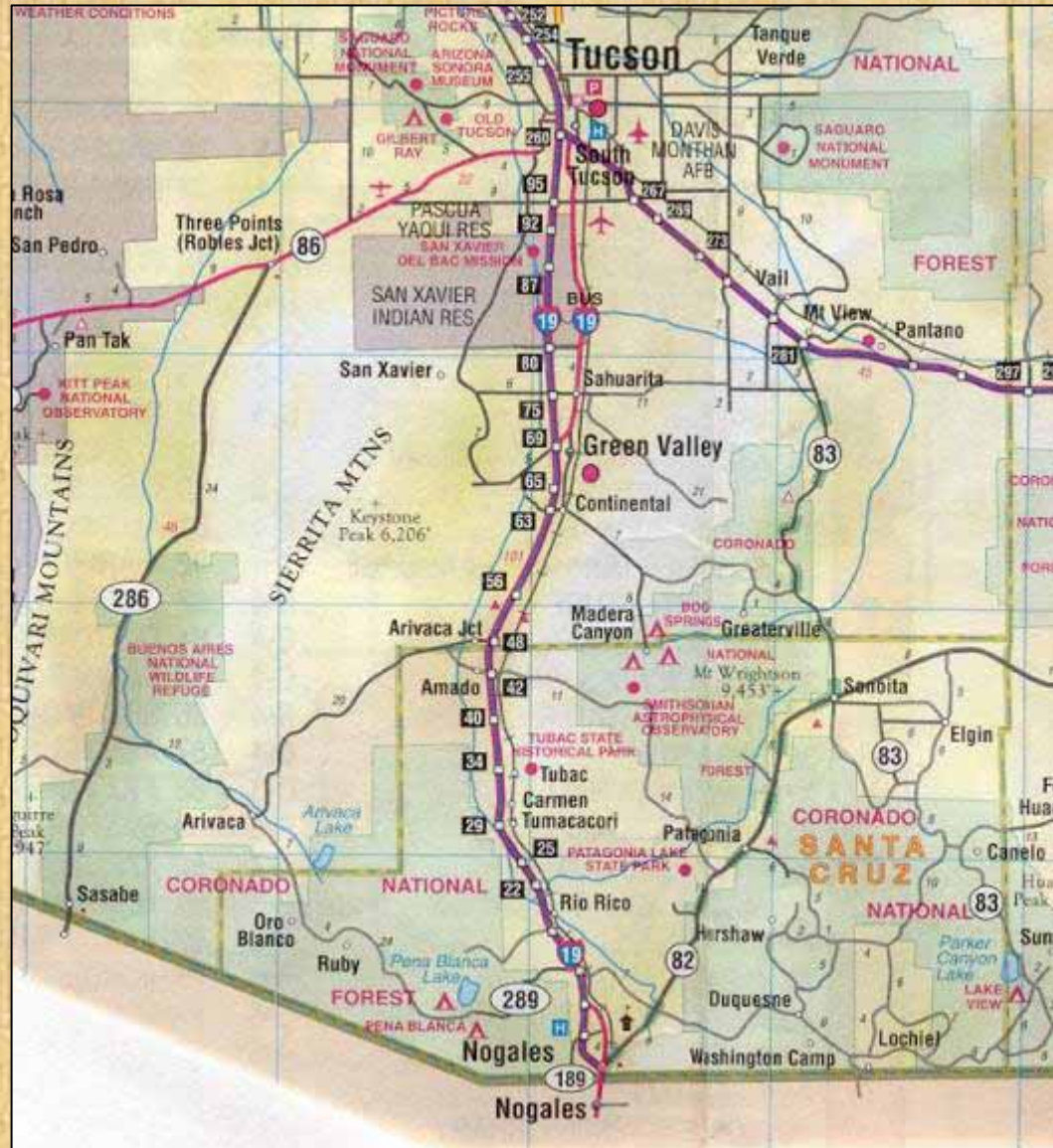
**Bob Ring**  
520-529-8328  
ringbob1@aol.com

**Al Ring**  
520-529-0910  
ringal@comcast.net

**Tallia Pfrimmer Cahoon**  
520-791-0720  
rubyoro@worldnet.att.net

# Ruby is in south-central Arizona

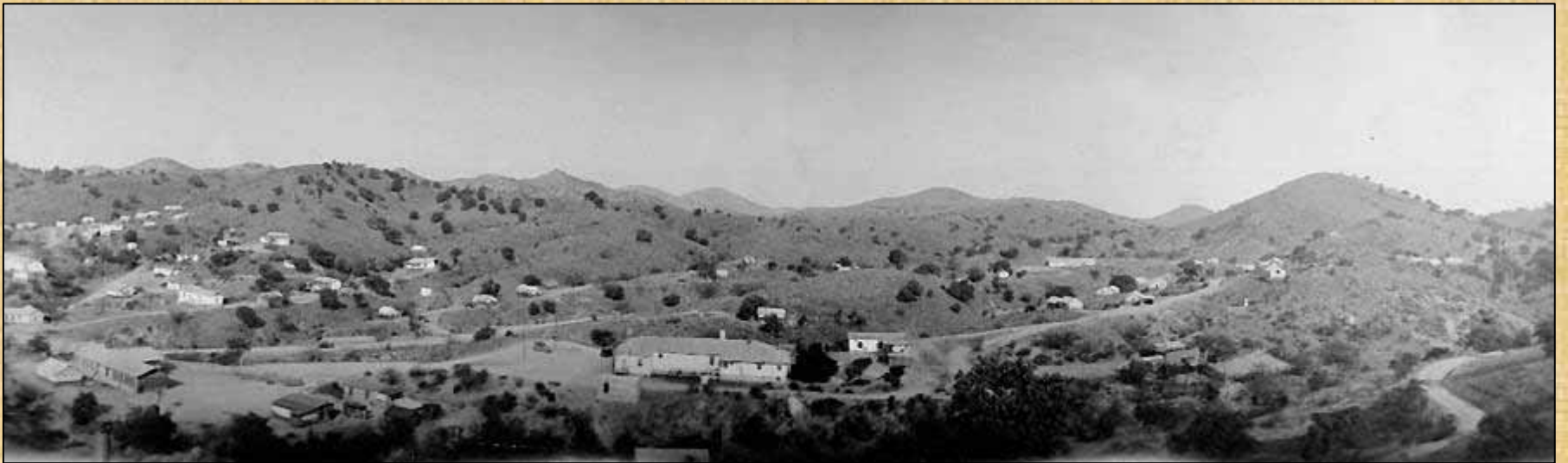
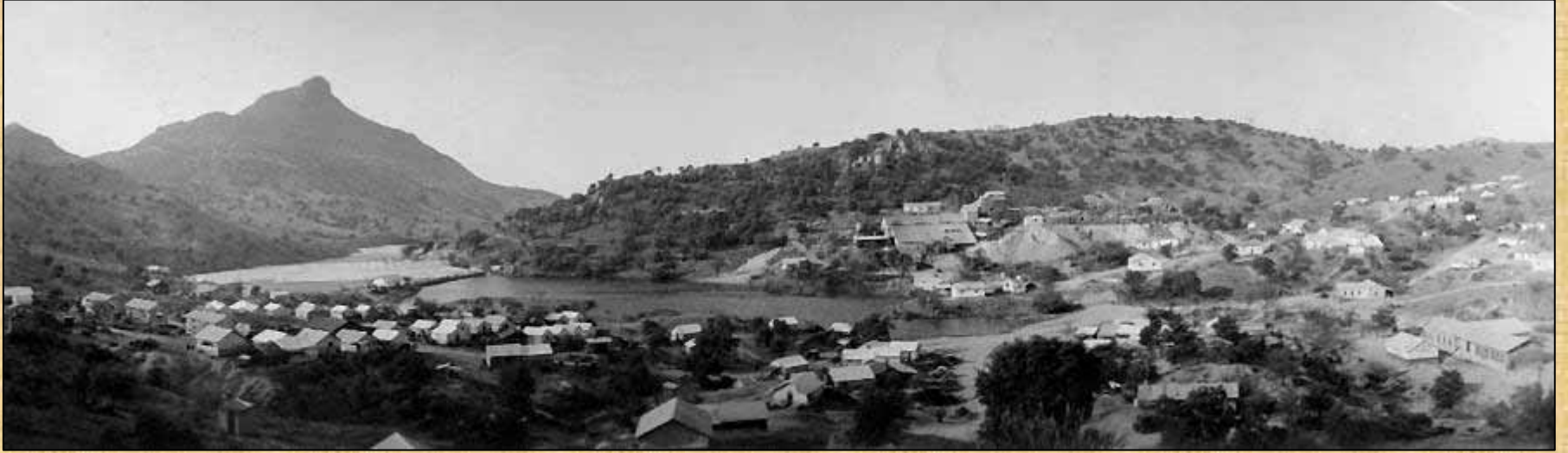
Five miles from the Mexican border



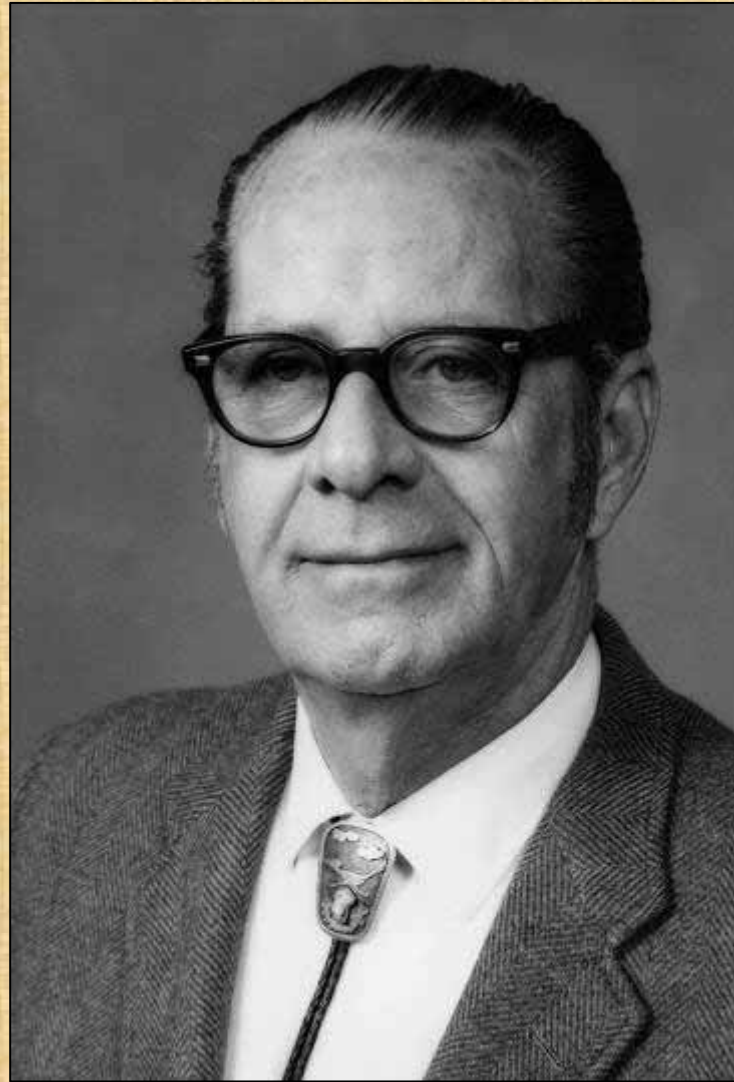
**The ghost town of Ruby lies at the  
foot of 5,370-foot Montana Peak**



## Ruby in the late 1930s



**Richard Frailey was the spokesperson for the Tucson group that bought the Montana mine and Ruby**



## 1965 “No Trespassing” Sign



# Exploring Mining Opportunities

- **Tailings Dump:** 700,000 tons; small amounts of gold and silver
- 1964: Assays, but no mining action
- 1972: Ruby Mines, Inc., Objective to reclaim gold and silver
- 1977-80: Tech Associates from Dallas Texas leached tailings with “cyanidization” process  
**\$ return not good enough**
- 1985-88: K & K Mining Co. (local) worked hard setting up a heap-leach / cyanide process  
**inefficient process – went bankrupt**
- 1990: Sierra Precious Metals of Sparks, Nevada ran metallurgical tests

**Last 14 years: no additional tests or mining**

**Late 1960s &  
early 1970s -  
Hippies in Ruby**





# 1975 – Ruby Accepted on National Register of Historic Places

Mr. Louis Daugherty, 2202 Florence Drive, Tucson, Arizona 85719

Dear Mr. Daugherty:

It is my pleasure to inform you that the ghost town of Ruby has been accepted and entered into the National Register of Historic Places as an historic property. The Register is the official schedule of the nation's cultural property that is worth saving. As such, the National Register is maintained and published periodically by the National Park Service, U. S. Department: of the Interior, Washington, D.C.

As State Historic Preservation Officer for Arizona's participation in this historic sites preservation program, I wish to express my appreciation for your support and cooperation in nominating the accepted property to the National Register of Historic Places.

Sincerely, DENNIS McCARTHY, State Parks Director, State Historic Preservation Officer, National Historic Preservation Act of 1966



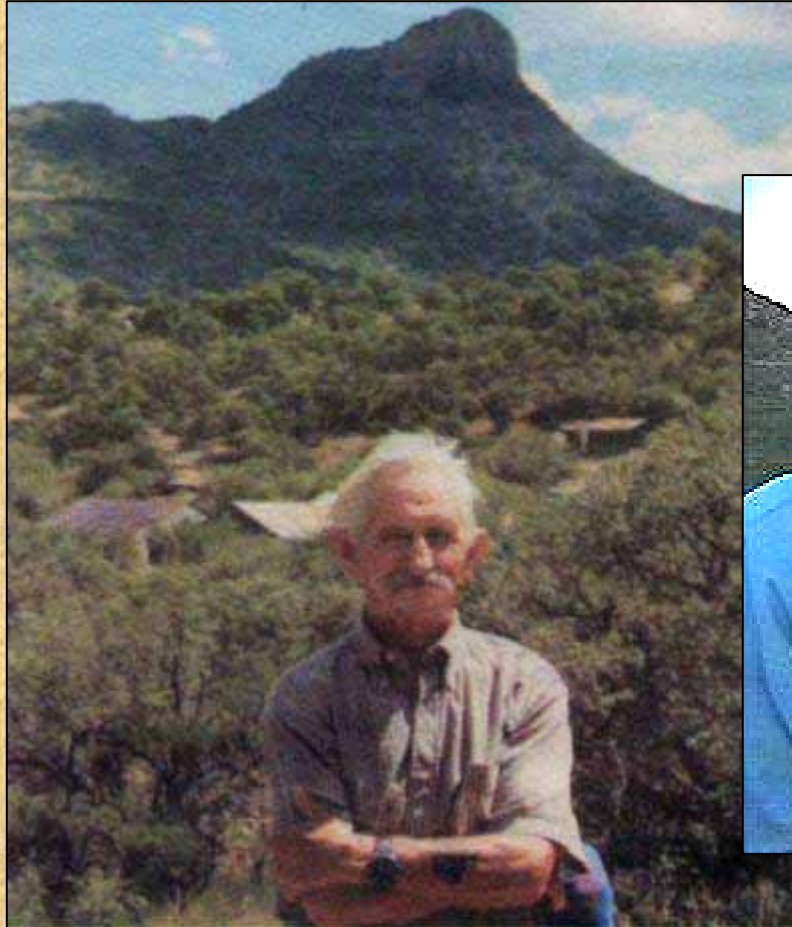
IN REPLY REFER TO:

United States Department of the Interior

NATIONAL PARK SERVICE  
WASHINGTON, D.C. 20240

# Ruby Caretakers

**Stan Christopher**



**Tommy Tynes**



# 1993 – Ruby Reunions Begin



# **Ruby Today – From the Ruby Road**



**Owners Contact: Pat and Howard Frederick  
520-744-4471**

# Ruby Entrance Gate



# Mining Buildings - Before



# Mill/Assay Office/Headframe/Warehouse

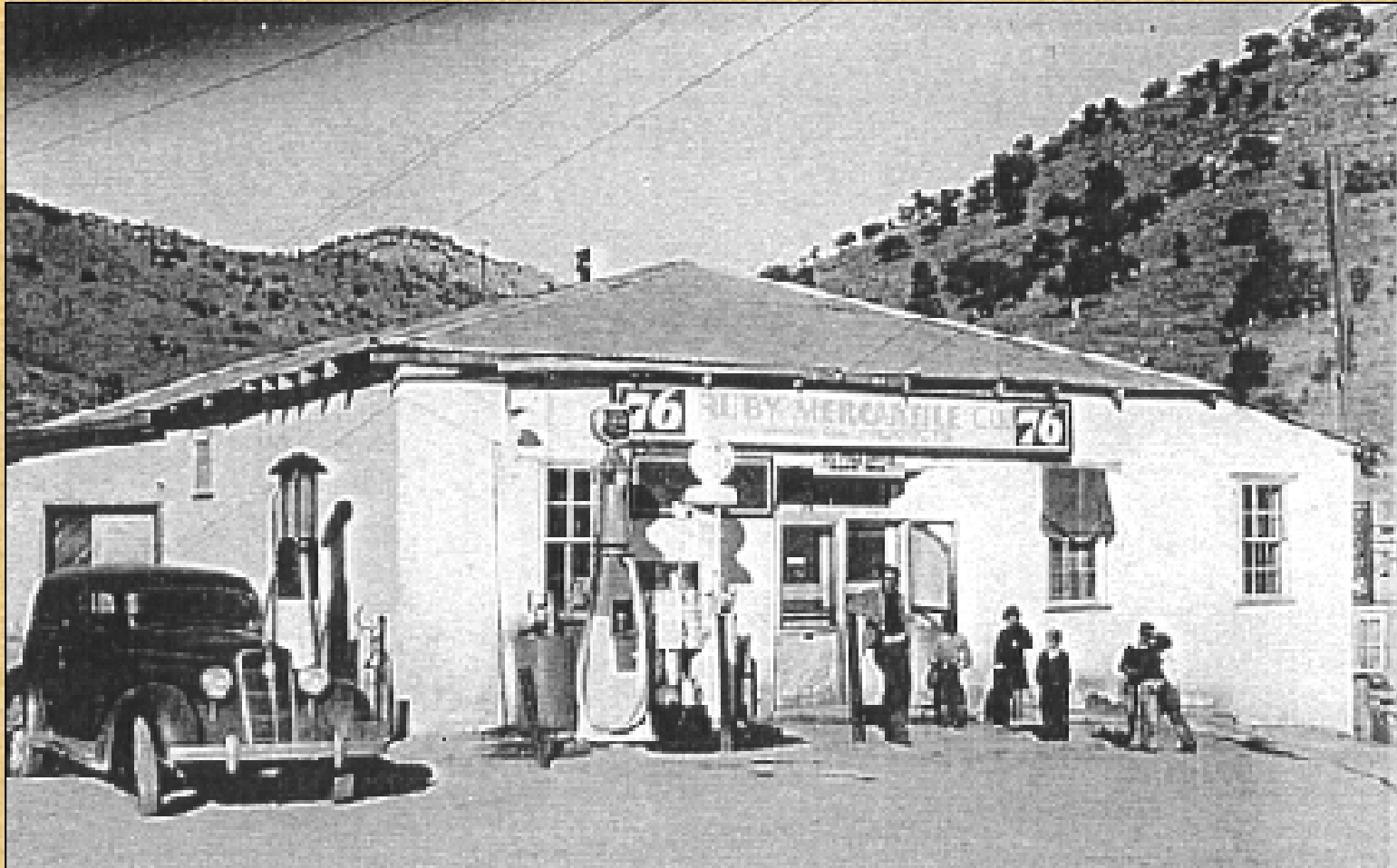


# Tailings Pond





## Mercantile – Before



# Mercantile



# School



# Hospital



# Jail



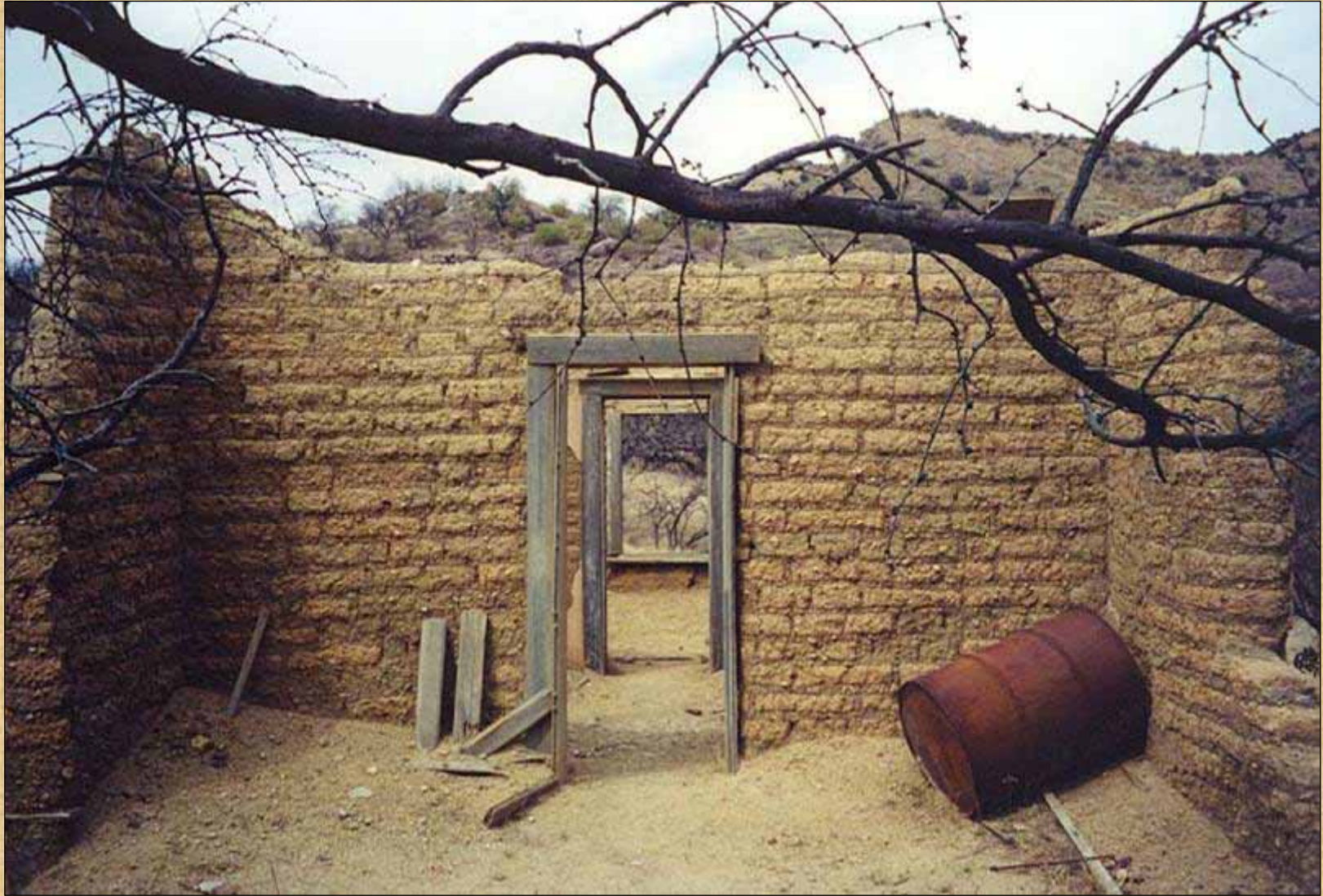
# Mine Superintendent's House



## Tallia Pfrimmer Cahoon's old Home - Before



# Tallia Pfrimmer Cahoon's Home





## **Tallia Pfrimmer Cahoon hosts the Pima Community College tours of Ruby**



- 1-2 tours per month, October – May
- Leave from Pima Community College &/or Green Valley
- All Day: 8:15 am – 5:30 pm
- \$69 per person

**To register: Call 520-206-6468**

## The Future of Ruby?

- Historic site?
- Center for ecological research and interpretation?
- Wildlife sanctuary?
- Recreation area for golf, tennis, swimming?

**The value of Ruby is what it is historically, environmentally, and aesthetically.**