

Arizona Territorial Postmarks

1850's to February 14, 1912

(Volume 2—H — O, includes latest catalog)

(Current value guide)

(Also 1996 & 1998 value guide)

By Al Ring

This collection was started in the early 1990's and then pretty much stopped in the late 1990's. The collection consisted of the entire state of Arizona. In June of 2006 I started to make new presentation pages and update the collection.

The information for the pricing and towns in this collection come from Arizona Territorial Postmark Catalogue originally started by Dr. Sheldon H. Dike then taken over by Owen W. Kriege ph. D and now provided by Jewell L. Meyer. Also used in gathering information is The Postal History Foundation, Will C. Barnes *Arizona Place Names, Arizona Territory Post Offices & Postmasters, & Wells Fargo in Arizona Territory* by John and Lillian Theobald, *Railroads of Arizona Vol. 1*, by David F. Myrick, *Ghosts and Ghost Towns*, by W. J. "Jack" Way, *Ghost Towns and Historical Haunts in Arizona*, by Thelma Heatwole, *Arizona's Best Ghost Towns*, by Philip Varney, and other books where I might get information. Also included many post cards from Al Ring's collection and <http://www.ghosttowns.com/states/az/az.html>.

HACKBERRY



Arizona Territorial Postmarks

Town

Type **Postmark Code** **Hackberry** **Mohave Co. (1878-1962)**

- 1 C213S1RrB30
- 2 C21313S1B32½
- 3 C1eN1B26½
- 4 C1bN1BBR27
- 5 C1bN1B27½
- 6 C1bN1B28
- 7 Doane Ty. 2/3
- 8 4-Bar

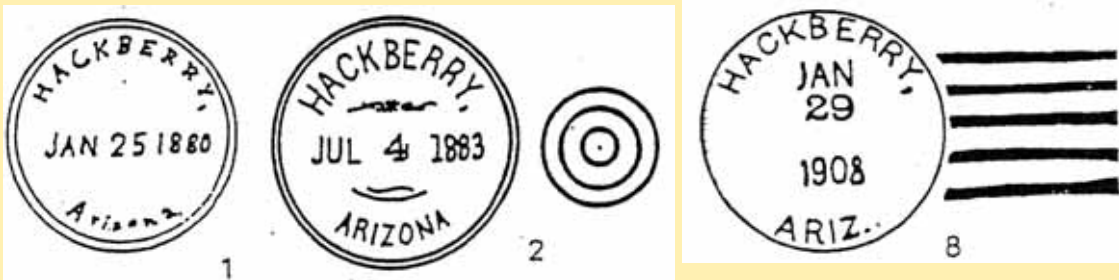
Hackberry

Mohave County

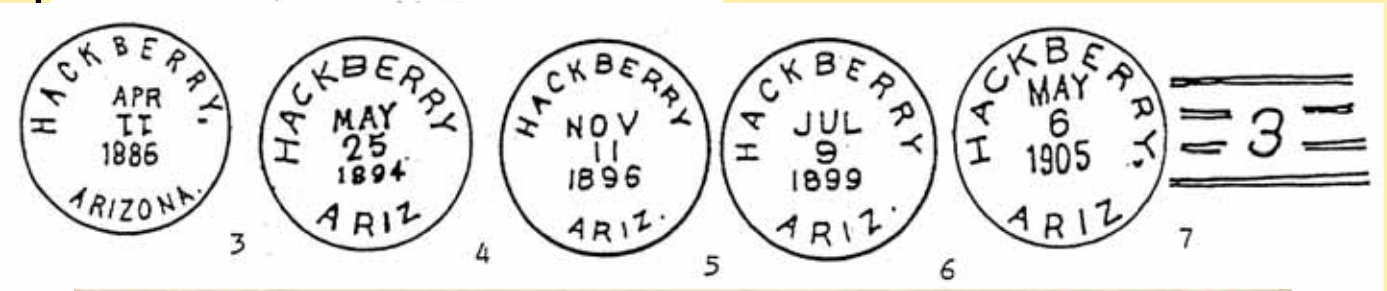
G. L. O., Map, 1921

In T. 23 N., R. 14 E. Town on A. T. & S. F. R. R. west I Peach springs on Truxton wash, east side Peacock mountains. "For eh hackberry mine which took its name from a large hackberry tree near a spring where the camp was." As nearly as the author can work it out this is

Beals' "Garden Spring,"



8



HARRINGTON



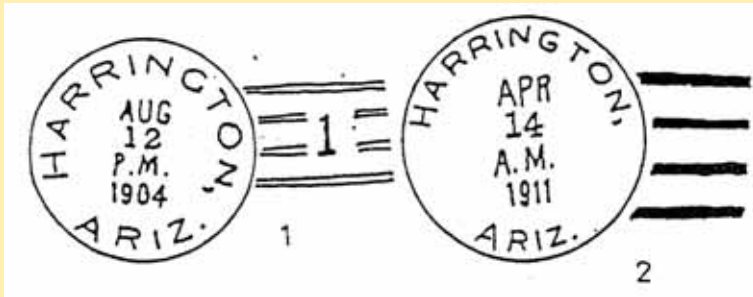
Town

Type Postmark Code Harrington Yavapai Co. (1904-1912)

- 1 Done Ty. 2/1
- 2 4-Bar

Harrington Yavapai County G. L. O., Map, 1909.

On Rock creek, in Prescott N. F. "Named for George P. Harrington, well known early day mining man who operated the Tiger mine near this place." Letter, Frank Grubb, Prescott, P. O. established April 4, 1904, Robert G. Scherer, P. M.



1



Arizona Territorial Postmarks



HARRINGTON



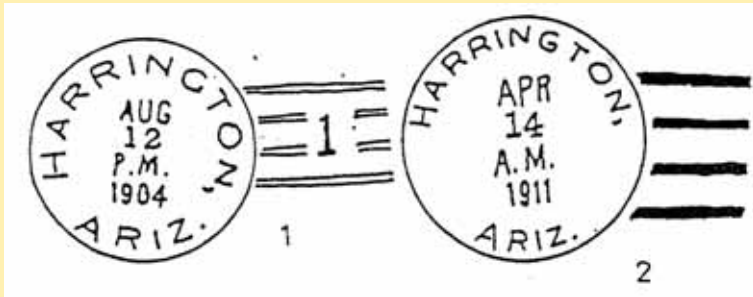
Town

Type Postmark Code Harrington Yavapai Co. (1904-1912)

- 1 Done Ty. 2/1
- 2 4-Bar

Harrington Yavapai County G. L. O., Map, 1909.

On Rock creek, in Prescott N. F. "Named for George P. Harrington, well known early day mining man who operated the Tiger mine near this place." Letter, Frank Grubb, Prescott, P. O. established April 4, 1904, Robert G. Scherer, P. M.



2



Arizona Territorial Postmarks



HAYNES



Town

Type Postmark Code Haynes Yavapai Co. (1908-1921)

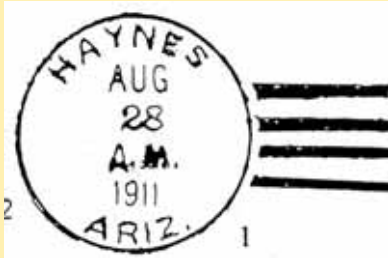
1 4-Bar

Haynes

Yavapai County

G. L. O., Map, 1909.

“R. R. station for Big Stick mine of which Lloyd C. Haynes was superintendent.” Letter, Supt. Santa Fe R. R., Needles, P. O. established April 4, 1908, John R. Roberts, P. M.



1

Arizona Territorial Postmarks



HILLSIDE



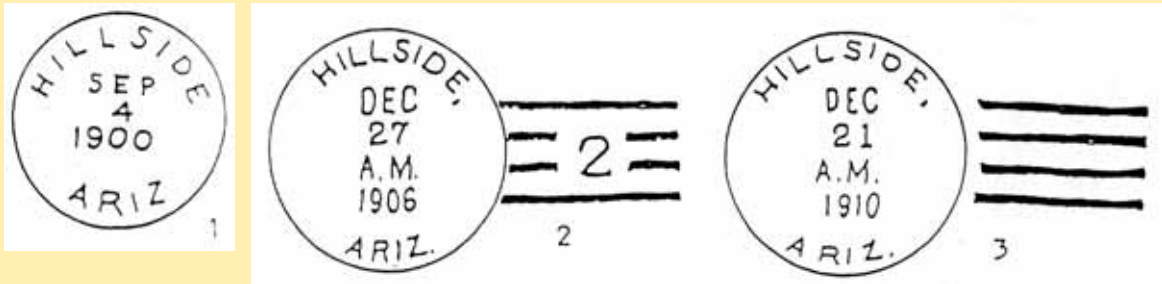
Town

Type Postmark Code Hillside Yavapai Co. (1888-1893; 1895-1963)

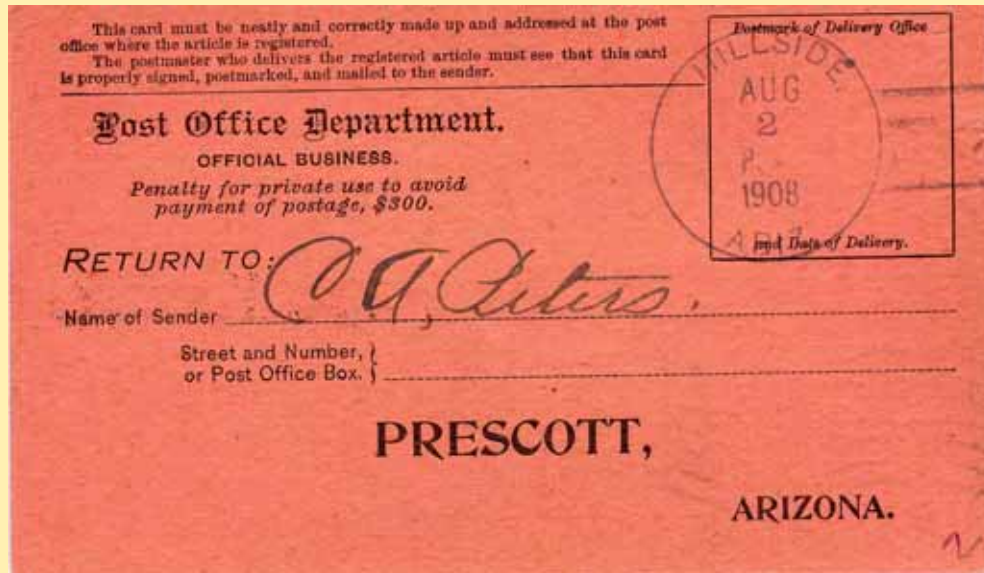
- 1 C1bN1B27½
- 2 Doane Ty. 3/2
- 3 4-Bar

Hillside Yavapai County G. L. O., Map, 1921.

Elevation 3,853 feet. In T. 13 N., R & W. Station on Ash Fork-Phoenix branch A. T. & S. F. R. R. On Date creek. Descriptive name. Town is on hillside. P. O. established July 31, 1888, John W. Archbald, P. M.



2



Arizona Territorial Postmarks



HOT SPRINGS



Arizona Territorial Postmarks

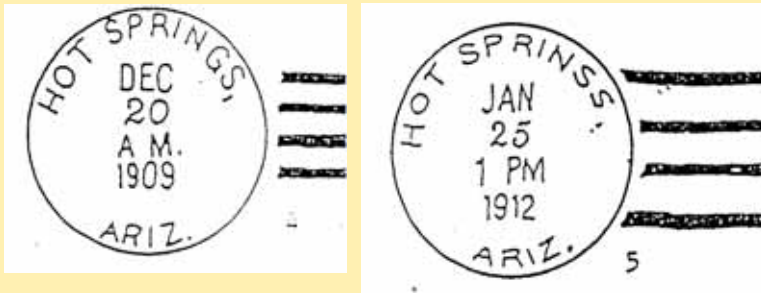
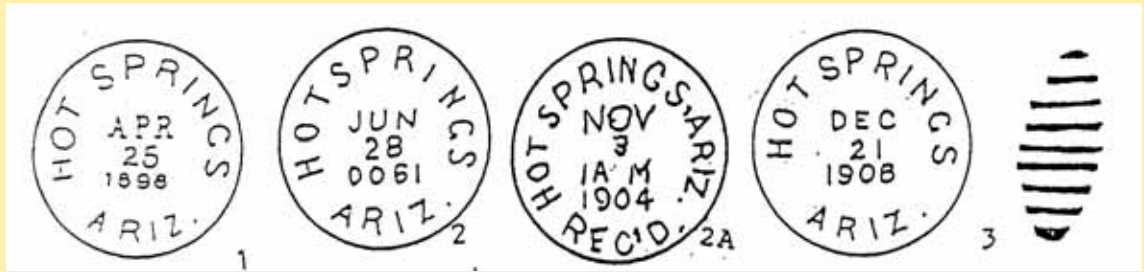
Town

Type **Postmark Code** **Hot Springs** **Yavapai Co. (1891-1936)**

- 1 C1bNeBBR27½
- 2 C1bN1B28
- 2A C1b16N1BBB29
- 3 C1bN129
- 4 4-Bar
- 5 4-Bar

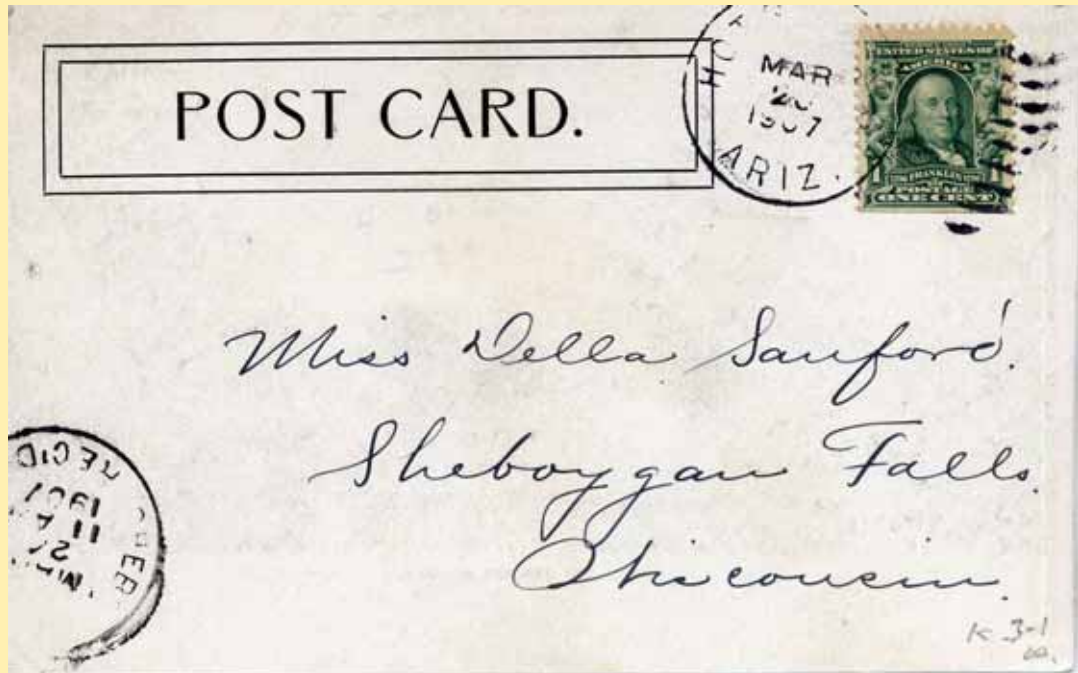
Hot Springs **Yavapai County** **G. L. O., Map, 1909—1921.**

In T. 7 N., R. 1 W. P.O. address for Castle Creek Hot springs. P. O. established as Hot springs, April 22, 1890, Minnie Grove, P.M.



Hot Springs Mar 20, 1907
Miss Della Sanford Shebouygan Falls, Wisconsin
March-19-1907 Hello Dell - come out and get warm
90 ub the shade. Helen H.

3



HOT SPRINGS



Arizona Territorial Postmarks

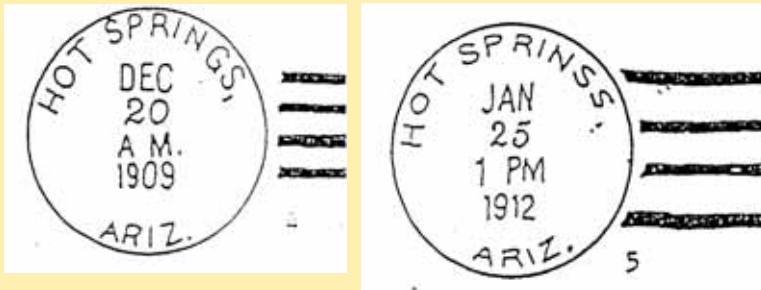
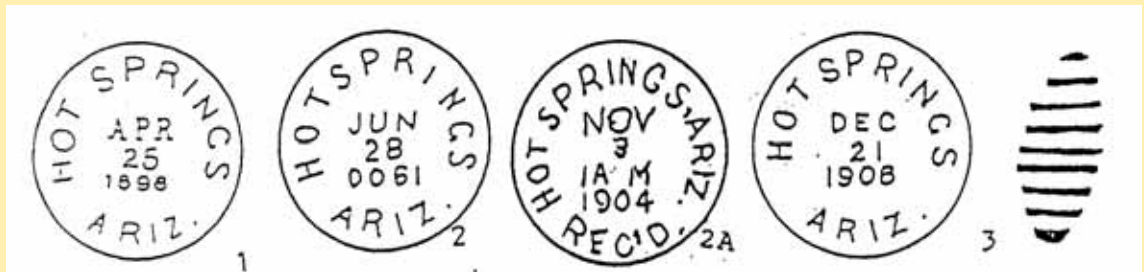
Town

Type Postmark Code Hot Springs Yavapai Co. (1891-1936)

- 1 C1bNeBBR27½
- 2 C1bN1B28
- 2A C1b16N1BBB29
- 3 C1bN129
- 4 4-Bar
- 5 4-Bar

Hot Springs Yavapai County G. L. O., Map, 1909—1921.

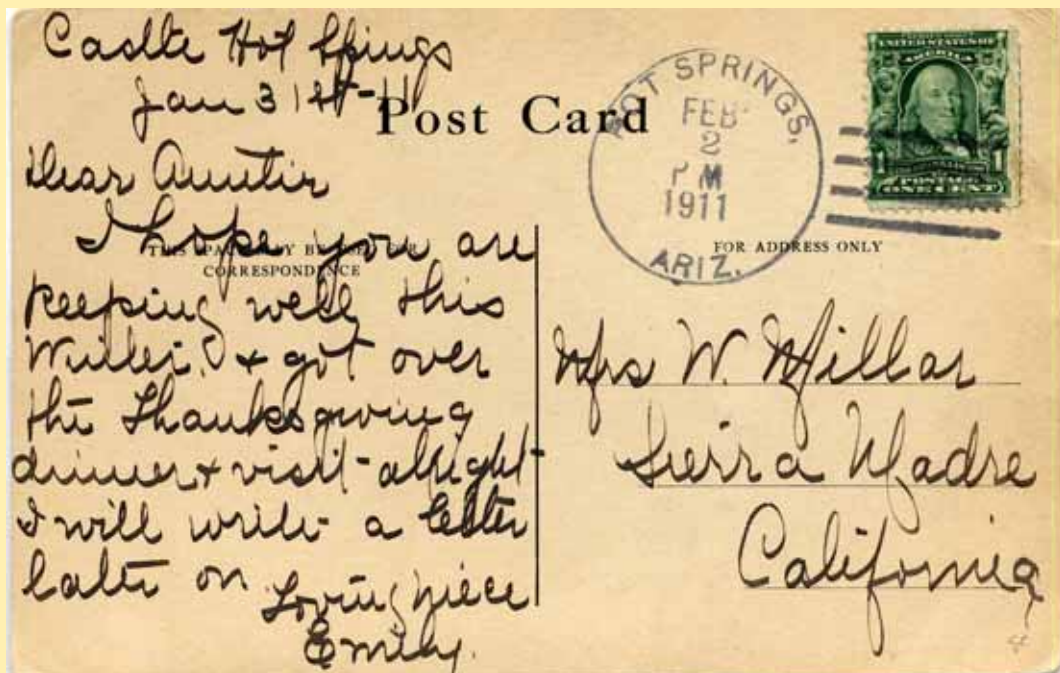
In T. 7 N., R. 1 W. P.O. address for Castle Creek Hot springs. P. O. established as Hot springs, April 22, 1890, Minnie Grove, P.M.



Hot Springs Feb 2, 1911

Mrs. W. Millar Sierra Vadra, California
 Castle Hot Springs Jan 31, st 11
 Dear Auntie, Hope you are keeping well this winter
 & got over the Thanksgiving dinner & visit - alright - I
 will write a letter later on. Loving Niece Emily

3



HOLBROOK



Arizona Territorial Postmarks

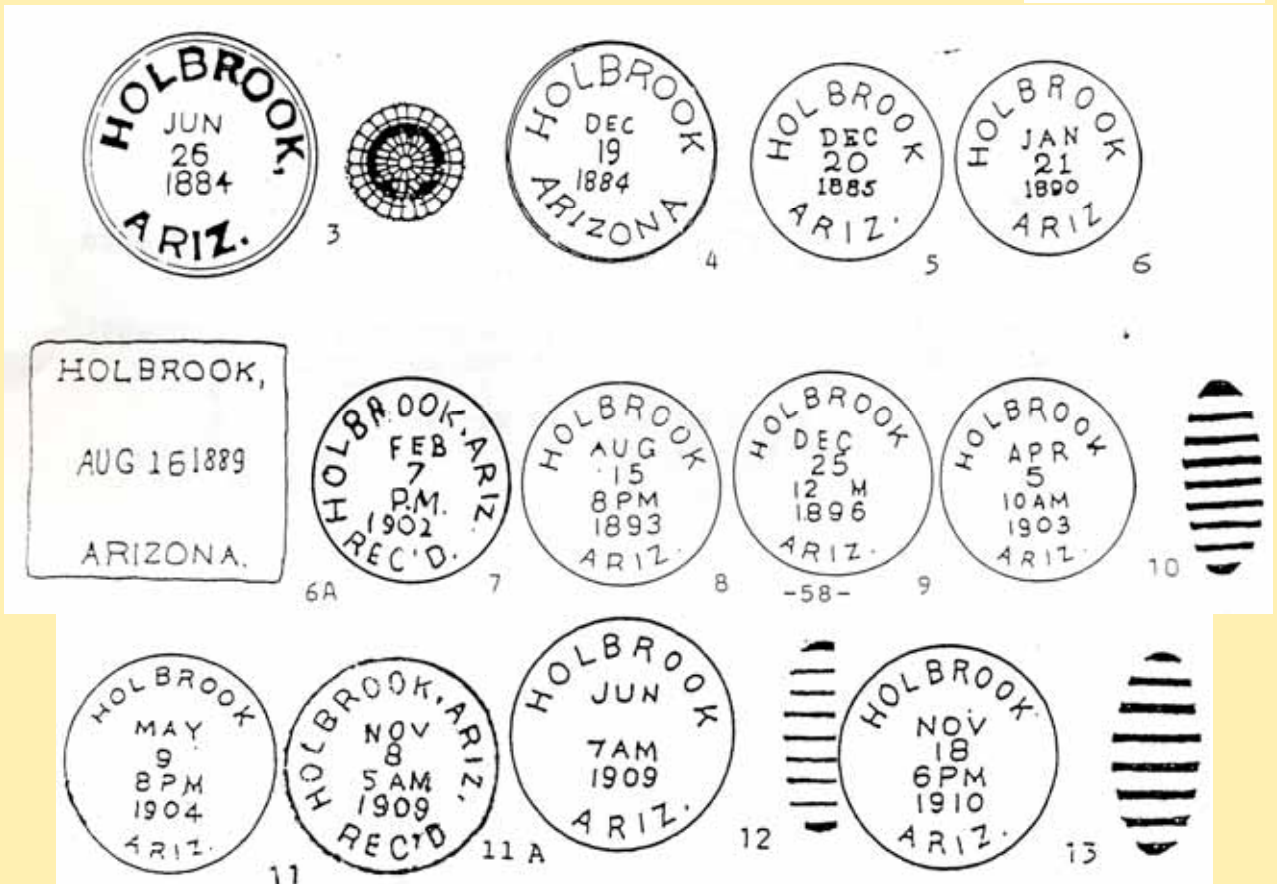
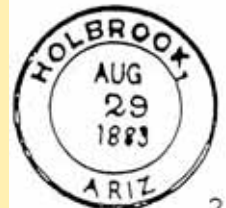
Town

Type Postmark Code Holbrook Apache/Navajo Co. (1882-1895; Navajo Co. 1895-present)

| | | | |
|----|--------------|-----|-------------|
| 1 | M | 8 | C1bT1B28 |
| 2 | C41bN1B27 | 9 | C1bT1B27½ |
| 2A | EX (WF) T-C | 10 | C1bT1B28 |
| 3 | C21bN1B33 | 11 | C1bT127½ |
| 4 | C21eN1RRB30 | 11A | C1b'16T1B29 |
| 5 | C1bN1BBR26½ | 12 | C1bT1B30 |
| 6 | C1bN1BBR26½ | 13 | C1bT1B28½ |
| 6A | SL | | |
| 7 | C1b'16T1B27½ | | |

Holbrook Apache/Navajo County G. L. O. Map, 1921.

Elevation 5,080 feet. County seat. Formerly known as Horse-head Crossing. "Named, 1880, after H. R. Holbrook, first chief engineer of Atlantic and Pacific railroad. He was the builder of the Rocky Ford Colorado Irrigation system." A.G.W. James H. Wilson was the first P. M., Sept. 18, 1882. Orestes P. Chaffee, brother of Gen. Adna B. Chaffee, U.S.A., was P. M. and quarter-master agent here from March 4, 1888, to Sept. 9, 1889. He was a crippled Confederate soldier.

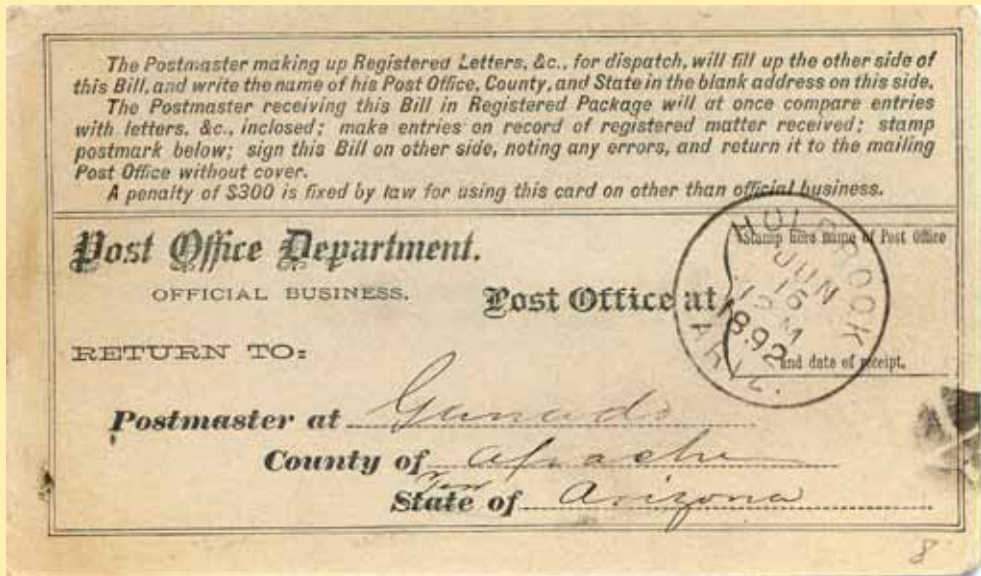


HOLBROOK

6 & 8



Arizona Territorial Postmarks

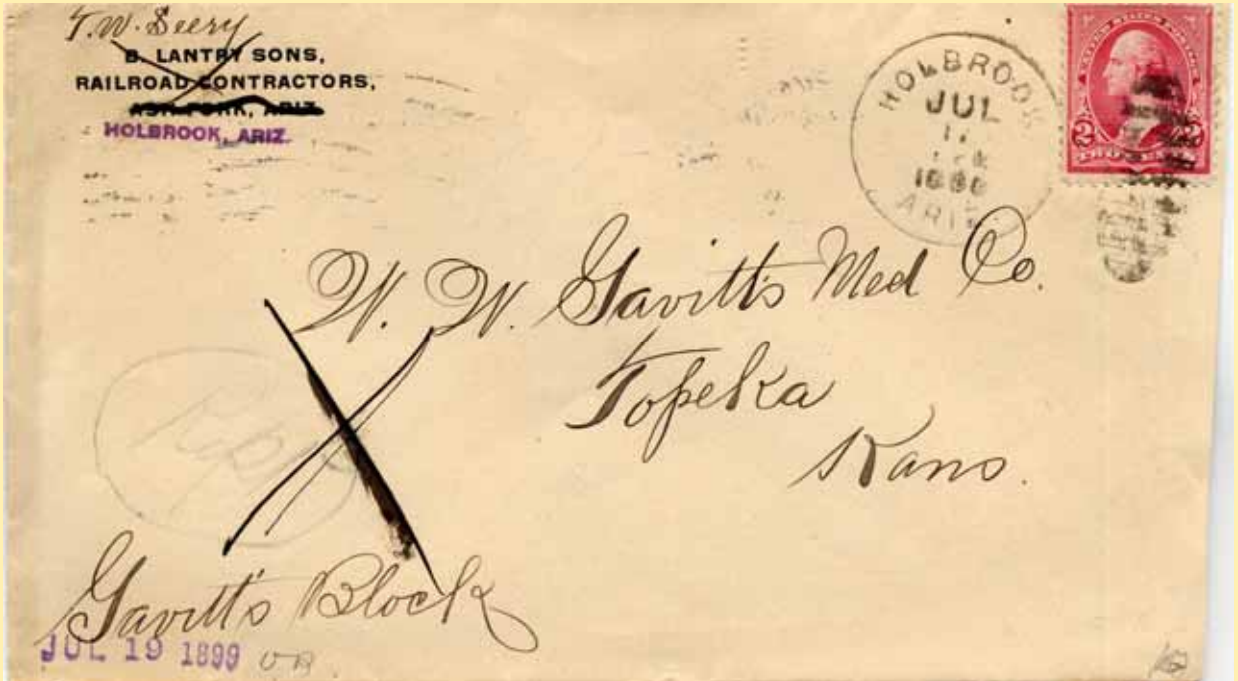


HOLBROOK

10 & 11



Arizona Territorial Postmarks

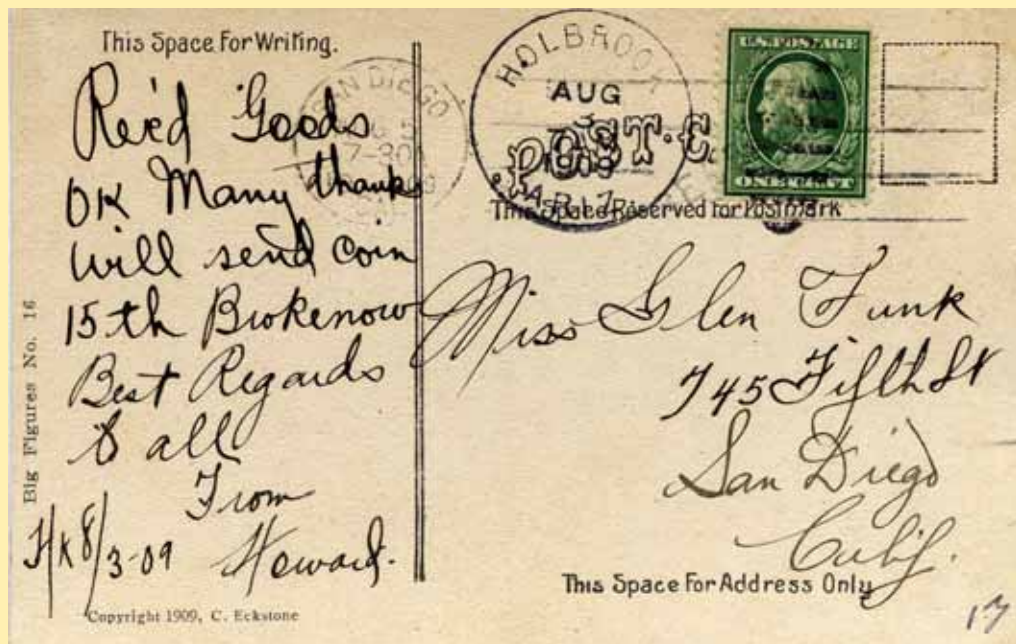
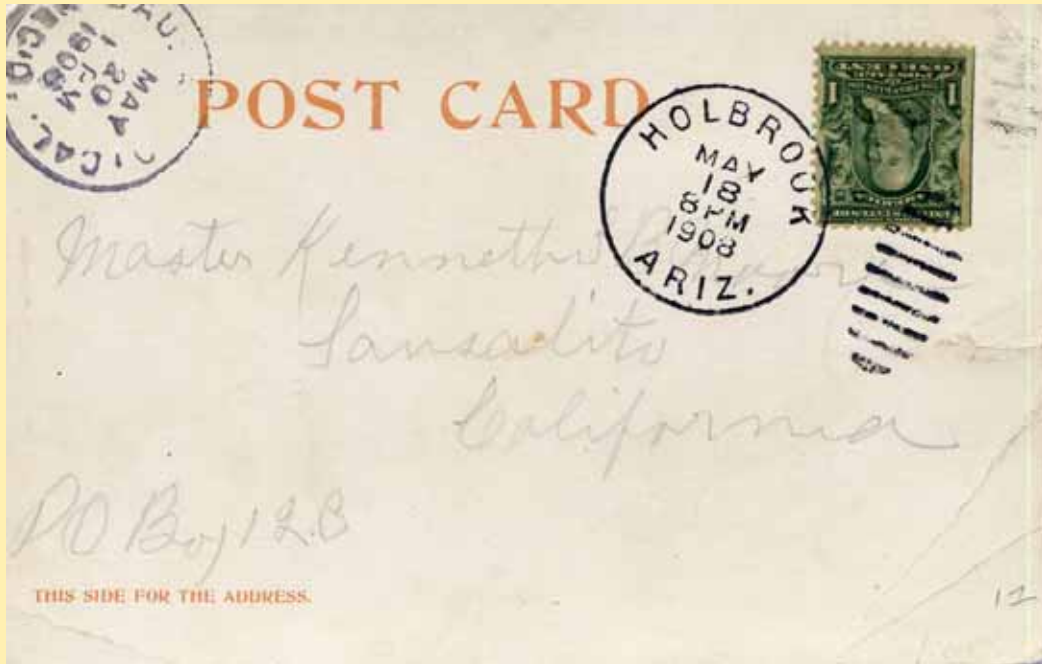


HOLBROOK

12 & 13

Holbrook May 18, 1908

Master Kenneth B. Moore Sansalito California P.C
Box 128
Hope you are well. We are on the train. It is a fine
day and hope you are well Love to all Moma,
Monday



Arizona Territorial Postmarks



HUMBOLDT



Arizona Territorial Postmarks

Town

Type Postmark Code Humboldt Yavapai Co. (1905—present)

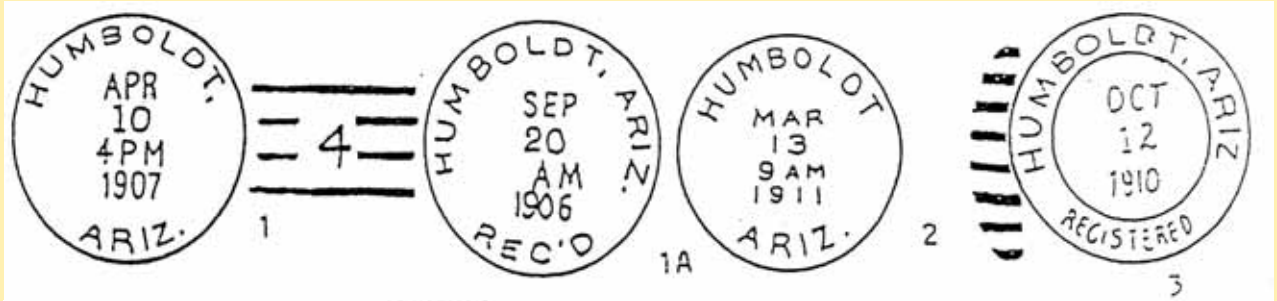
- 1 Doane Ty. 3/4
- 1A C1b'16T1B32
- 2 C1bT1B29½
- 3 C31b'17N1B31
- 4 SL
- 5 SL (Boxed)
- 6 C1b'16T1B29

Humboldt

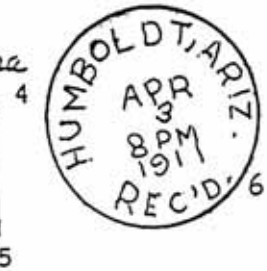
Yavapai County

G. L. O. Map, 1923.

In T. 13 N., R, 1 E. Well known mining and smelter camp. Named for Baron Alexander von Humboldt. Southwest of Prescott on Crown King branch of A. T. & S. F. R. R. First called Val Verde. P. O. established August 18, 1905, William F. Buckingham, P.M.



Humboldt, Arizona



Humboldt Sep 29, 1906
Mr. Roland Mosher Prescott A. T.

Mr. R. Mosher 9-29-06 Prescott A. T.
Please send me 50 affidavit forms for registering
Native Born Ohlige Yours Truly
Geo. H. Francis, Humboldt A. T.



HUMBOLDT



Town

Type Postmark Code Humboldt Yavapai Co. (1905—present)

- 1 Doane Ty. 3/4
- 1A C1b'16T1B32
- 2 C1bT1B29½
- 3 C31b'17N1B31
- 4 SL
- 5 SL (Boxed)
- 6 C1b'16T1B29

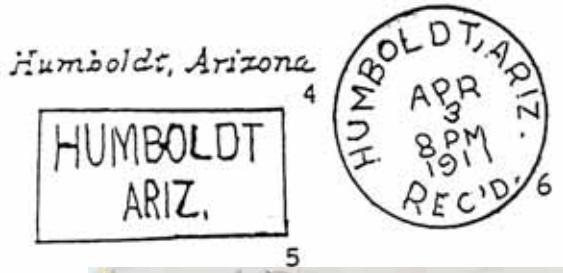
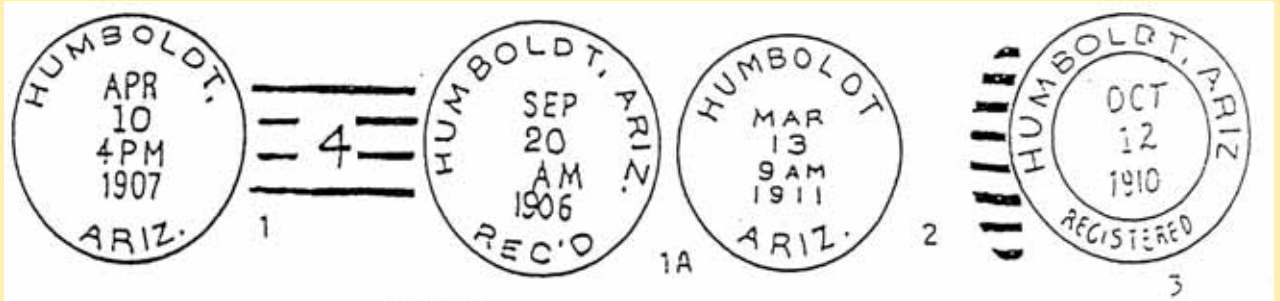
Arizona Territorial Postmarks

Humboldt

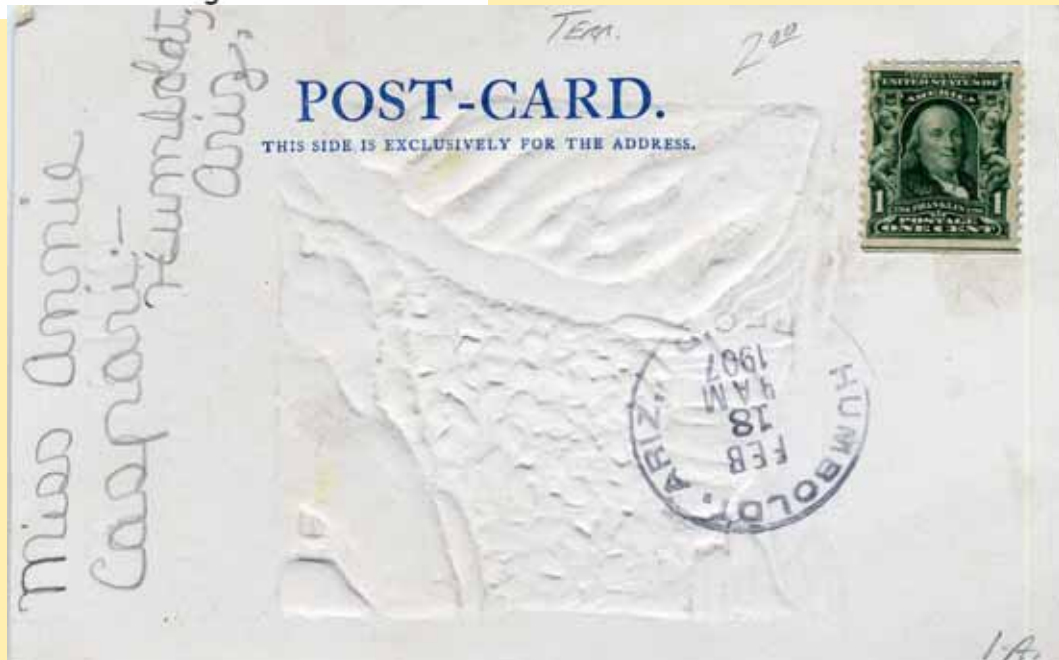
Yavapai County

G. L. O. Map, 1923.

In T. 13 N., R. 1 E. Well known mining and smelter camp. Named for Baron Alexander von Humboldt. Southwest of Prescott on Crown King branch of A. T. & S. F. R. R. First called Val Verde. P. O. established August 18, 1905, William F. Buckingham, P.M.



1A



HUMBOLDT



Town

Type Postmark Code Humboldt Yavapai Co. (1905—present)

- 1 Doane Ty. 3/4
- 1A C1b'16T1B32
- 2 C1bT1B29½
- 3 C31b'17N1B31
- 4 SL
- 5 SL (Boxed)
- 6 C1b'16T1B29

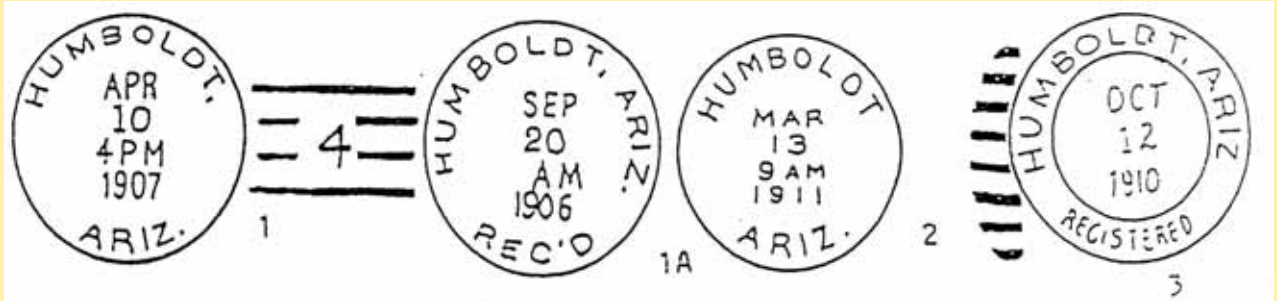
Arizona Territorial Postmarks

Humboldt

Yavapai County

G. L. O. Map, 1923.

In T. 13 N., R. 1 E. Well known mining and smelter camp. Named for Baron Alexander von Humboldt. Southwest of Prescott on Crown King branch of A. T. & S. F. R. R. First called Val Verde. P. O. established August 18, 1905, William F. Buckingham, P.M.



Humboldt, Arizona



Humboldt Aug. 5, 1910

Mrs. W. R. Johnson, Bedford Ind 1616
 Dear Mother: Well this looks perty good out here
 and I think possibly we will stay but cant tell for sure.
 I have gone to work will write later. Your Son -----



IRONSPRINGS



Town

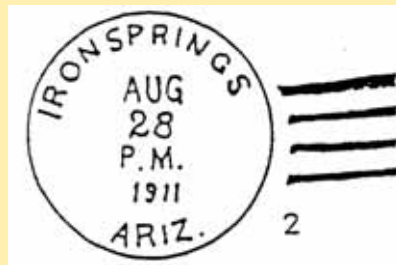
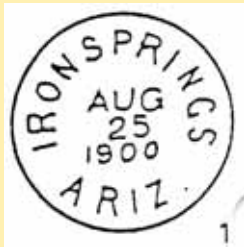
Type Postmark Code Ironsprings Yavapai Co. (1900-1966)

1 C1bN1B28

2 4-Bar

Ironsprings Yavapai County G. L. O. Map, 1921; Prescott N. F., 1926.

Station and summer resort on A. T. & S. F. H. R. Old time station on Prescott-Wickenburg stage line. Six miles southwest of Prescott. When it was a stage station, they said the water contained considerable iron, hence the name. About 1890 some Phoenix residents organized a "summer outing club" and built a number of cottages here. They had the water analyzed, but found no iron in it. Investigation however, did develop the fact that the sands about the spring were full of iron. This gave the name to the springs. P. O. established June 22, 1900, Elmer Hawley, P. M.



Iron Springs Jul 3,

Mr. Herbert D. Pahues 1871 East 81st. St.
Cleveland Ohio
Iron Springs, A. T. July 3 Dear W. & E: We are up here fro the summer in a heated cottage. Cool for Arizona. Mabel The "Climb - it" is exhilarating.

1



Arizona Territorial Postmarks



JEROME



Arizona Territorial Postmarks

| Town | Type | Postmark Code | Jerome | Yavapai Co. | (1883—present) |
|------|------|---------------|--------|-------------|----------------|
| | 1 | C413N1RRB34 | | 13 | C1bT1B28½ |
| | 2 | C21eN1B28½ | | 14 | C1bT1B28½ |
| | 3 | C1eN1RRB26½ | | 15 | C41bN1RRB29 |
| | 4 | C21fN1RrB29½ | | 16 | C1bT1B28 |
| | 5 | M | | 17 | C1b'16T1B28 |
| | 6 | C1bN1BBR27½ | | 18 | C1bT1B29 |
| | 7 | C1bT1B28 | | 19 | C1bT1B29 |
| | 8 | C1dN1B26½ | | 20 | C1bT1B29½ |
| | 9 | C1bT1B27 | | 21 | C31b'17N1B29 |
| | 10 | C1bT1B28½ | | 22 | C1b'16T1B29 |
| | 11 | C1bN1B28 | | 23 | C1bT1B29½ |
| | 12 | SL (REG) | | 24 | C1bT1B29 |

Jerome

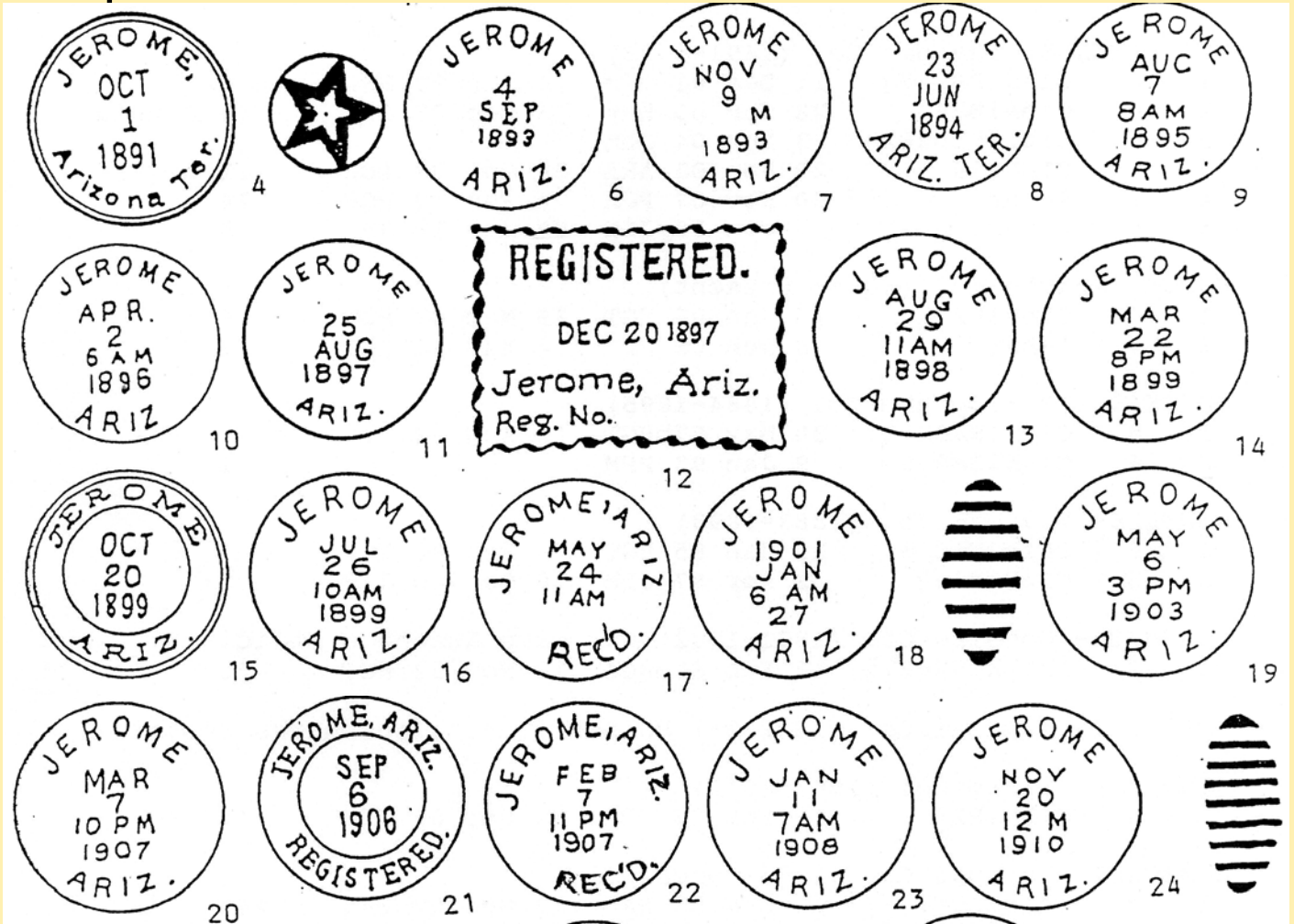
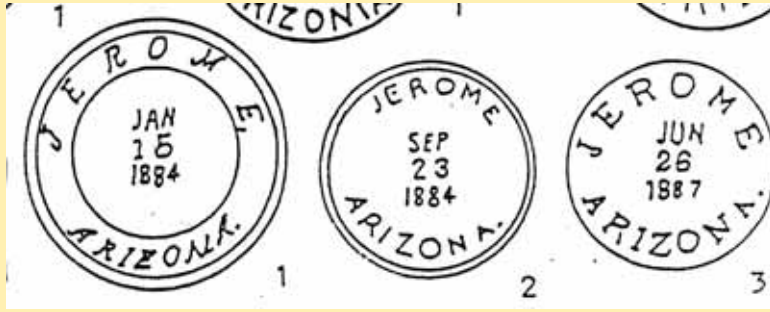
Yavapai County

U. S. G. S. Map, 1926

Elevation 5,435 feet. On Prescott N. F. "After Eugene Jerome, New York Attorney, on of the organizers of the United Verde Copper Co., 1883." Letter, Robert E. Talley, Jerome. Headquarters for Senator Clark's well known United Verde mine on Verde Tunnel and Smelter r. R. Smelters were located here first but removed to Clarkdale where there was more room. P. O. established September 19, 1883, Frederick Thomas, P. M.



JEROME

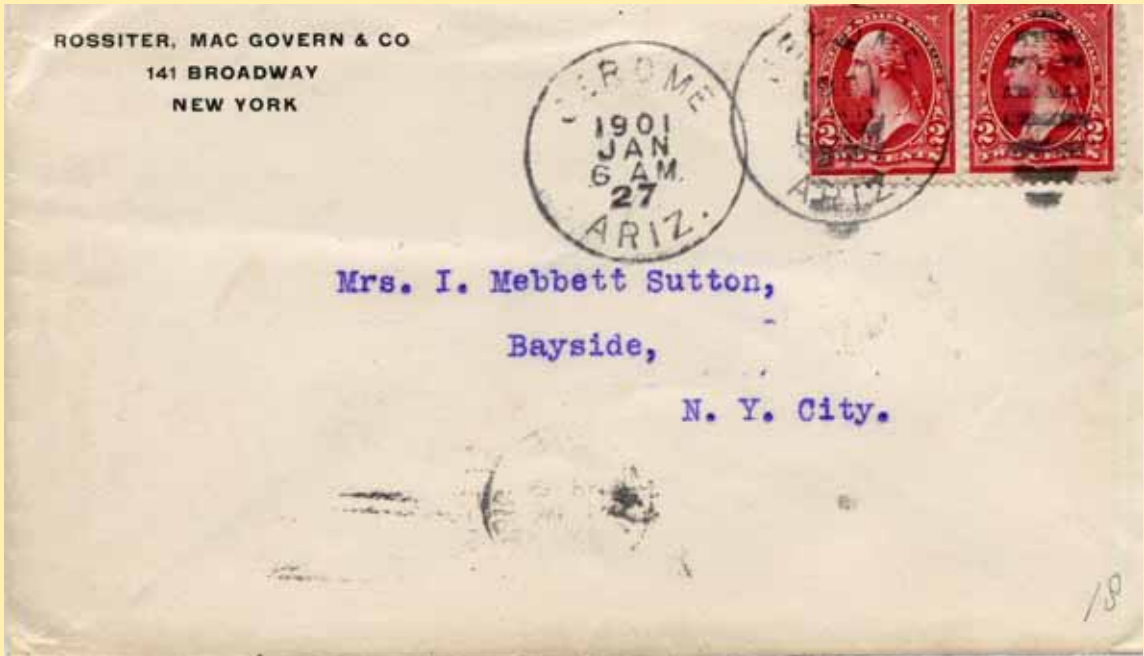


JEROME

18 & 19



Arizona Territorial Postmarks

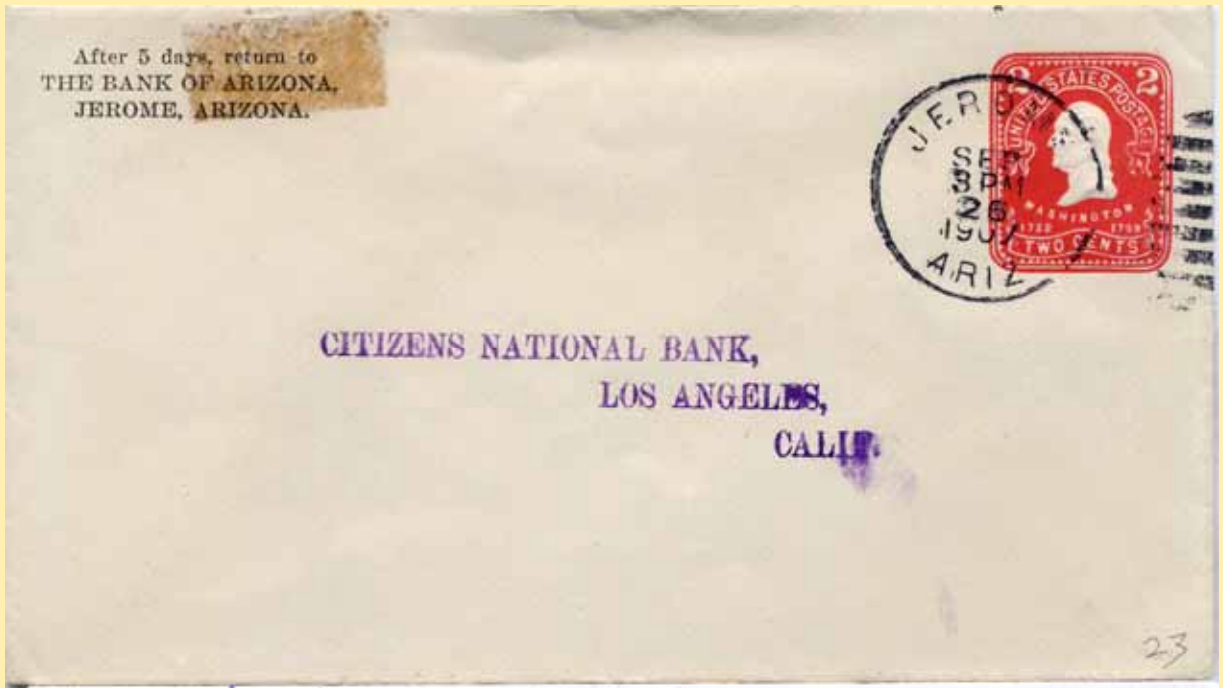


JEROME

20 & 23



Arizona Territorial Postmarks



JEROME

24

Jerome Jul 3, 1910
Mr. & Mrs. E. Mahurin Junction, Arizona

July 2, 1910 Our dear Dad & Mama - It has been a long time since we had a letter from either of you. How are you all? A & I am well - Travi's is well also and says he likes Arizona fine. You must write us a long letter soon. Tell us all the news. Come over soon both of you. Much love for all from both of us.
Your loving A & B



JUNCTION



Arizona Territorial Postmarks

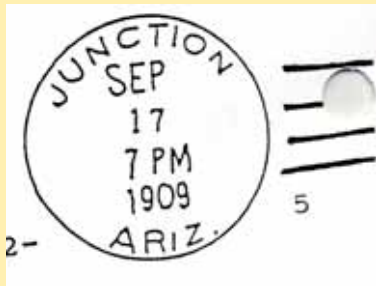
Town

Type **Postmark Code** **Junction** **Yavapai Co. (1895-1914)**

- 1 C1bN1B27½
- 1A C1bN1B27½
- 2 C1bN127½
- 3 C1bN1B30
- 4 C1b'16T1B33
- 5 4-Bar

Junction Yavapai County

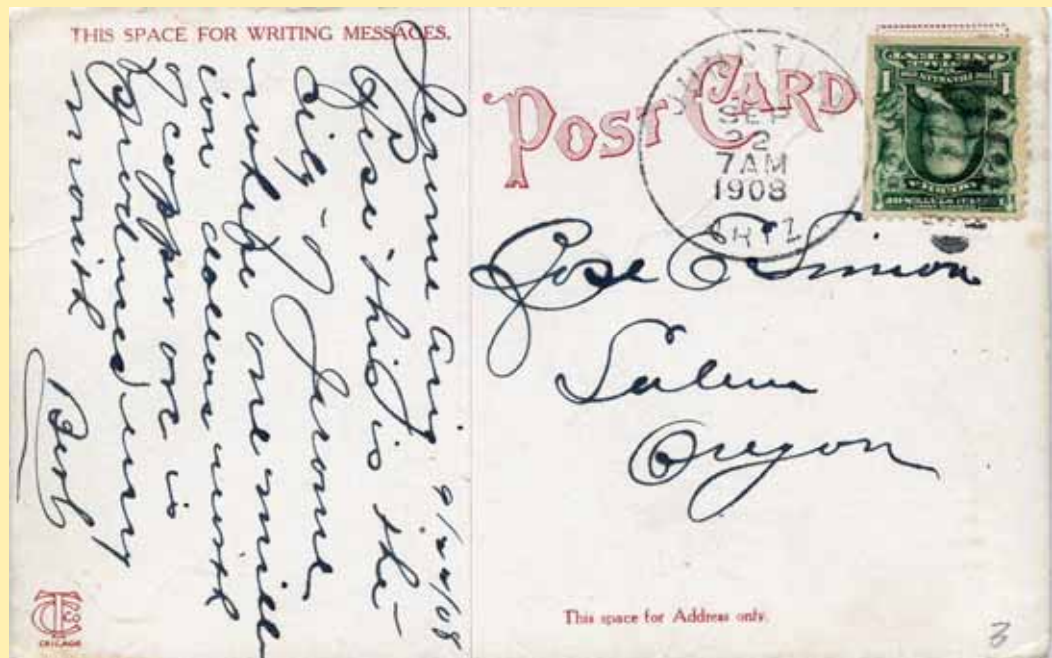
Junction point, Jerome narrow gauge road and Ash Fork-Prescott branch. P. O. established as Junction, June 7, 1895, George G. West, P. M. Changed to Jerome Junction, December 23, 1914.



Junction Sep 22, 1908

Rose E. Simon Salem Orgon
Jerome Ariz, 9/22/08

Rose this is the city - of Jerome where one million dollars worth of copper ore is produces every month B---



JUNCTION



Arizona Territorial Postmarks

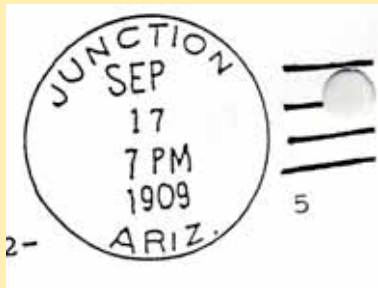
Town

Type **Postmark Code** **Junction** **Yavapai Co. (1895-1914)**

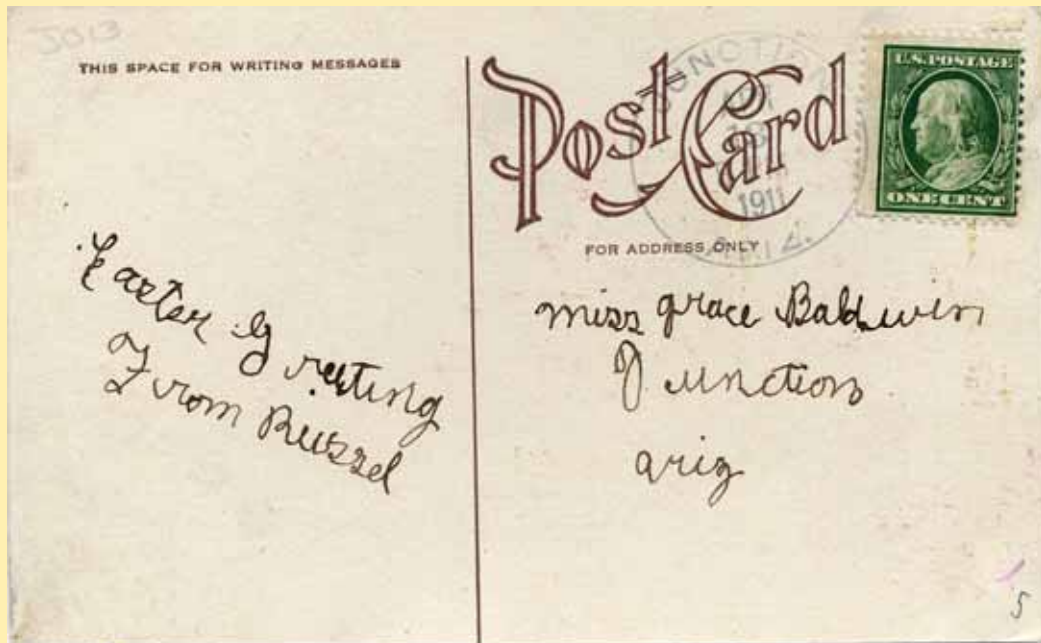
- 1 C1bN1B27½
- 1A C1bN1B27½
- 2 C1bN127½
- 3 C1bN1B30
- 4 C1b'16T1B33
- 5 4-Bar

Junction Yavapai County

Junction point, Jerome narrow gauge road and Ash Fork-Prescott branch. P. O. established as Junction, June 7, 1895, George G. West, P. M. Changed to Jerome Junction, December 23, 1914.



5



KEAMS CANON



Arizona Territorial Postmarks

Town

Type Postmark Code Keams Canon Apache/Navajo Co. (1895-present)

- 1 C21bN1B27
- 2 C1bS1RBB28½
- 3 C1bS1B29½
- 4 C1bN1B28
- 5 C1bN1b29
- 6 4-Bar

Keams Canon Apache/Navajo County Gregory Map, 1916; U. S./ G. S. 1923.

Canyon and spring on Navajo Ind. Res.; also trading post and headquarters U. S. Indian School. Located 1878 by Thomas Varker Keam. U. S. Government later bought land and improve-ments and established the school.

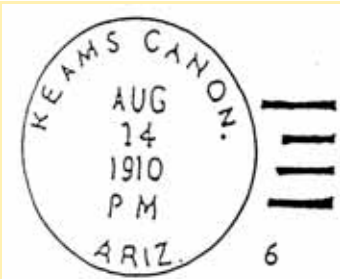
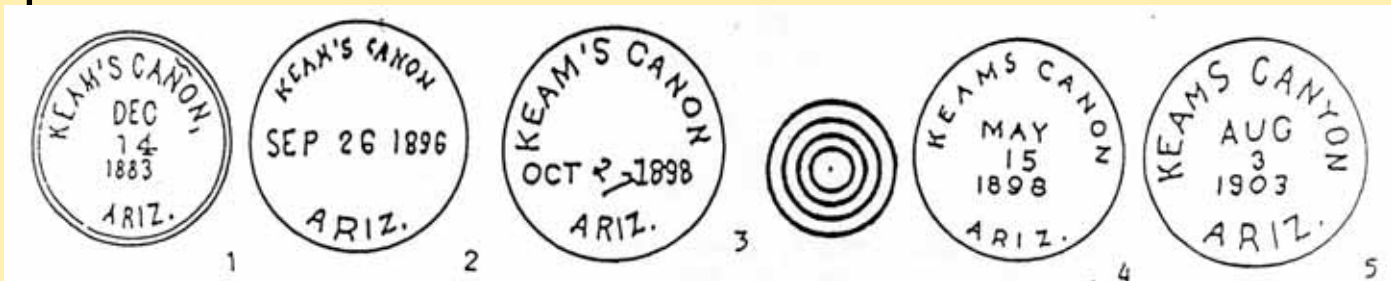
Keam was born in Truro, Cornwall, England, in 1843. He was a salt water sailor for some years; landed in San Francisco, Calif., late in 1861.

“January 22, 1862, enlisted as private in Co. C, 1st. Calif. Vol. Inftry. Transferred to Co. B, Oct., 1864. Honorably mustered out at expiration of service at Santa Fe, New Mexico, Jan. 22, 1865. Age at enrollment given as 19 years.” War Dept. records.

Keam remained free less than a month. The War Dept. records read: “Reenlisted at Ft. Bascom, N. M., Cavalry and Inftry., Co. C. Sergeant in First Battalion, N. M. Cavalry and Inftry., Col. C. Carson commanding. (This was evidently a temporary organi-zation.) Transferred after six months as Second Lieut., 1st. New Mexico Cavalry, Col. Carson commanding. Mustered out at Santa Fe, New Mexico, Sept. 29, 1866. Age at enlistment, 22 years.”

“In 1877 Thomas V. Keam was employed as Post Interpreter at Fort Wingate, New Mex-ico, for about a year. Was also Chief Packer at the post and on duty with Indian prisoners at Ojo Caliente, N. M. until Mar. 15, 1878, when he left the army and moved to the Hopi reservation.” Letter from Quartermaster General’s office, Jan. 5, 1929.

Keam died at Truro, Cornwall, England, Nov. 30, 1904, age 61 years. Cultivated, and re-fined, Keam was a fine type of English gentleman. His home at the Canyon was open to all on an equal footing; the scientific explorer and wandering Indian shared his generous hospitality alike. According to Gregory, “Keam went into the White Mesa copper district, some 60 miles north of Tuba City, in 1882, with Elias S. Clark of Phoenix. They located a number of copper claims.” Clark verified this fact at Phoenix in January, 1931. A letter from Keam to Dr. Washington Mat-thews dated from Albuquerque, N. M., April 6, 1914, says: “I first went among the Navajos as Spanish inter-preter in 1874. Was subsequently appointed special agent for the tribe.” P. O. estab-lished under name Keams Canon, (sic) March 12, 1882, Alexander M. Steven, P. M. 1J.S.G.B. Decision, Keam Canyon.

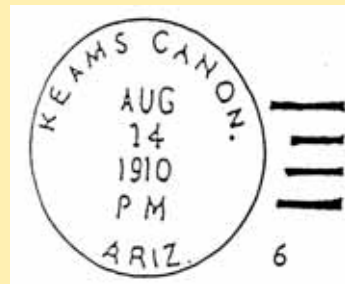
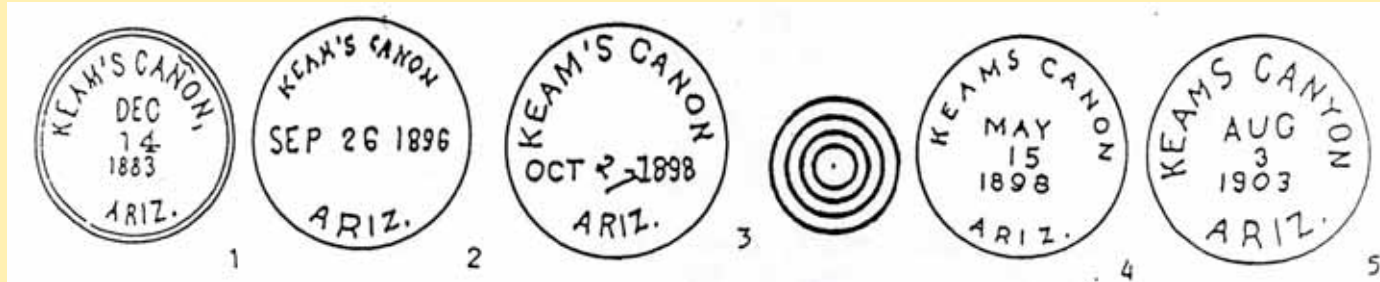


KEAMS CANON

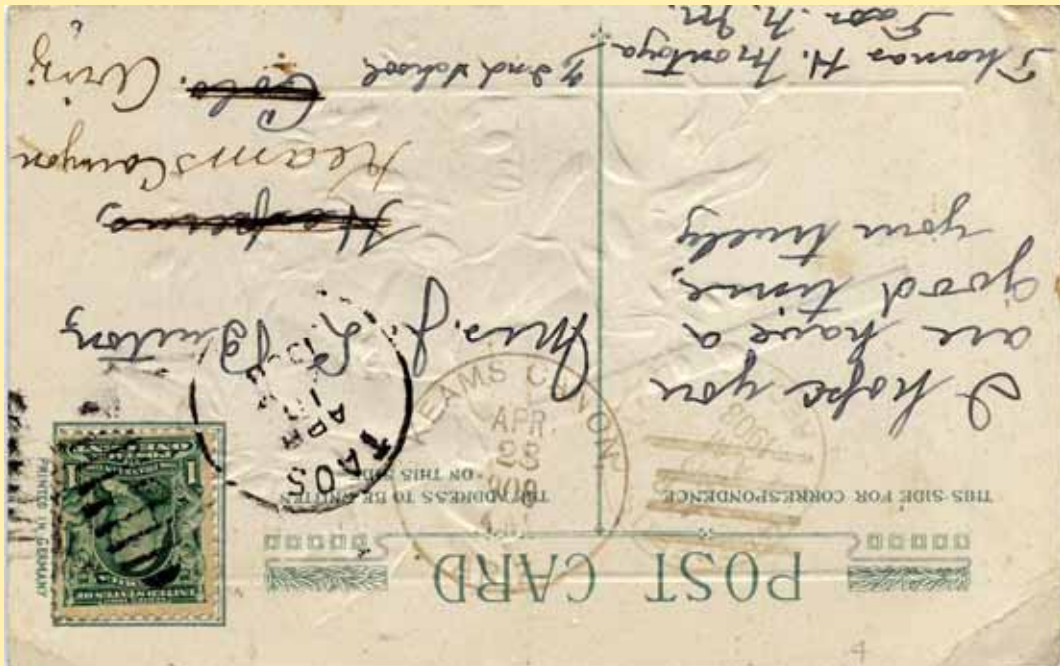


Town
Type Postmark Code Keams Canon Apache/Navajo Co. (1895-present)

- 1 C21bN1B27
- 2 C1bS1RBB28½
- 3 C1bS1B29½
- 4 C1bN1B28
- 5 C1bN1b29
- 6 4-Bar



6



Arizona Territorial Postmarks



KELVIN



Arizona Territorial Postmarks

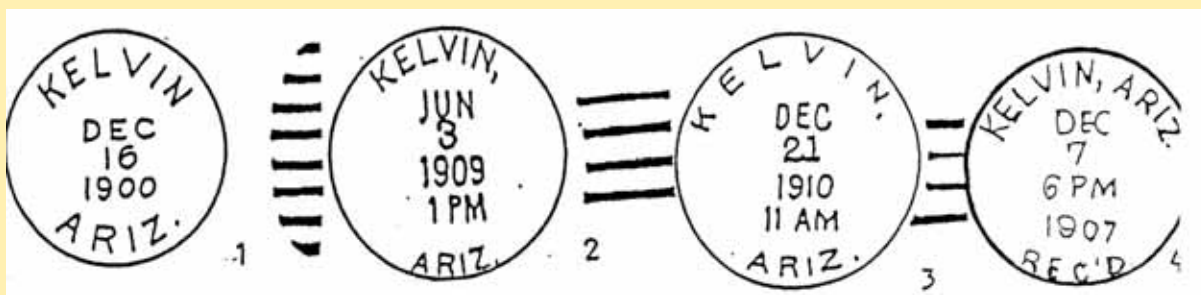
Town

Type Postmark Code Kelvin Pinal Co. (1900—1956)

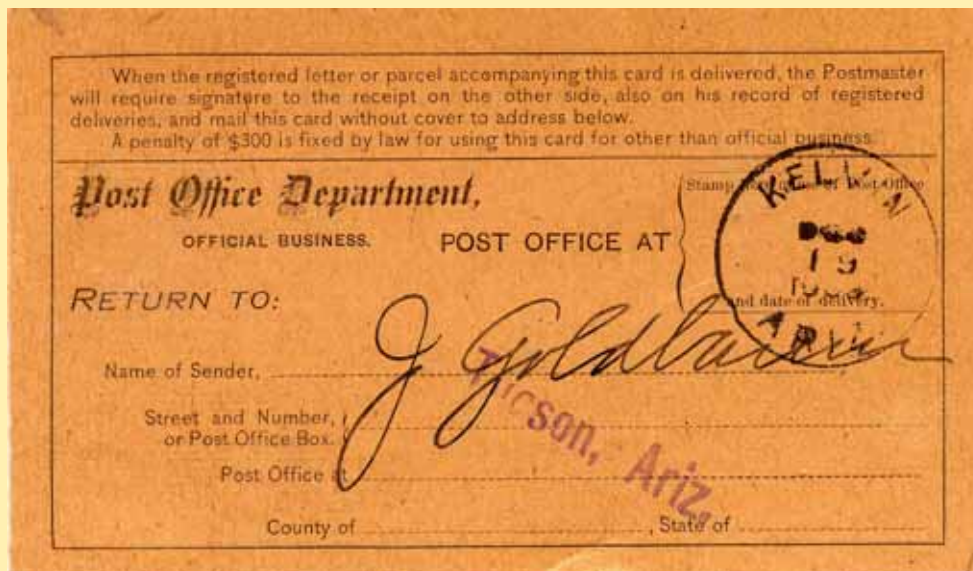
- 1 C1bN1B29
- 2 4-Bar
- 3 4-Bar
- 4 C1b'16T1B30

Kelvin Pinal County G. L. O. Map, 1921; Tonto N. F., 1926.

In sec. 1, T. 4 S., R. 13 E. Mining camp at junction of Mineral creek and Gila river. On S.P.R.R. Named by mining company after Lord Kelvin of England. When Ray began to develop, the railroad company changed Kelvin to Ray Junction. P. O. is still called Kelvin; established April 25, 1900, Sarah Hockett, P.M. See Ray.



6 1

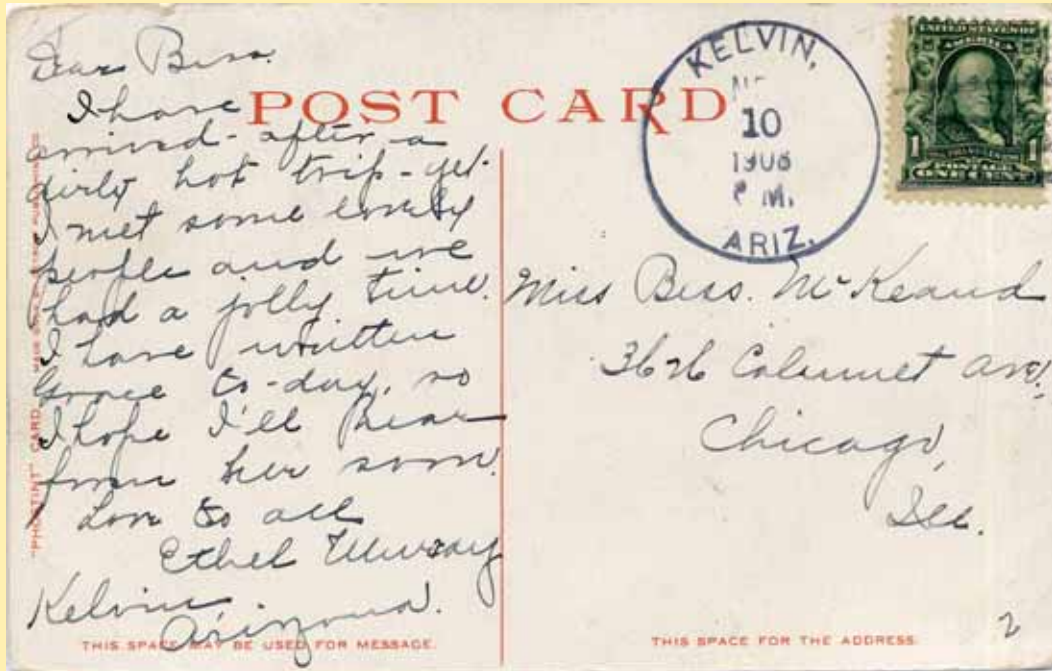


KELVIN

2 & 3



Arizona Territorial Postmarks



KENILWORTH



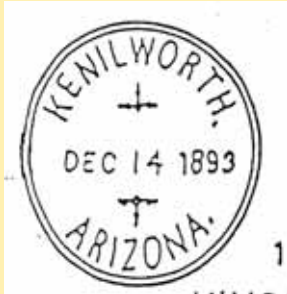
Town

Type Postmark Code Kenilworth Mohave Co. (1891—1895)

1 C21e13S1B33

Kenilworth Mohave County G. L. O. Map, 1929

Headquarters ranch of Kenilworth Cattle Co., owned by Hon. Tom Davis, cattleman and politician, about 1889. On Gila river about 7 miles west of Florence. "Davis, and Englishman, named the place for his ancestral home." Letter, Bud Ming, Ray. P. O. established September 20, 1891, Thos., C. Graham, P.M.



1



Arizona Territorial Postmarks



KINGMAN



Arizona Territorial Postmarks



| <u>Town</u> | <u>Type</u> | <u>Postmark Code</u> | <u>Kingman</u> | <u>Mohave Co.</u> | <u>(1891—present)</u> |
|-------------|-------------|----------------------|----------------|-------------------|-----------------------|
| 1 | | M | | 10A | C1bN1B32 |
| 2 | | C41bN1B27½ | | 11 | C1bN1B35½ |
| 2A | | EX (W. F.) TC | | 12 | C1bT1B28 |
| 3 | | C1bS1B29 | | 13 | C1bT1B28½ |
| 4 | | C41bN1B29½ | | 14 | C1b'16N1B28½ |
| 5 | | C1bS1B32½ | | 14A | C1b'16T1B28 |
| 5A | | C1bS1B32½ | | 15 | C1bT1B30 |
| 6 | | C1bN1B27 | | 15A | C31b'17N1RRB30 |
| 6A | | SL | | 16 | C1bT1B30 |
| 7 | | C21eN1B30 | | 17 | C31b'17N1RRB31½ |
| 8 | | C1bT1B27½ | | 18 | C1b'16T1B29 |
| 9 | | C1b'16A1B28 | | | |
| 10 | | C1bN1B29½ | | | |

Kingman

Mohave County

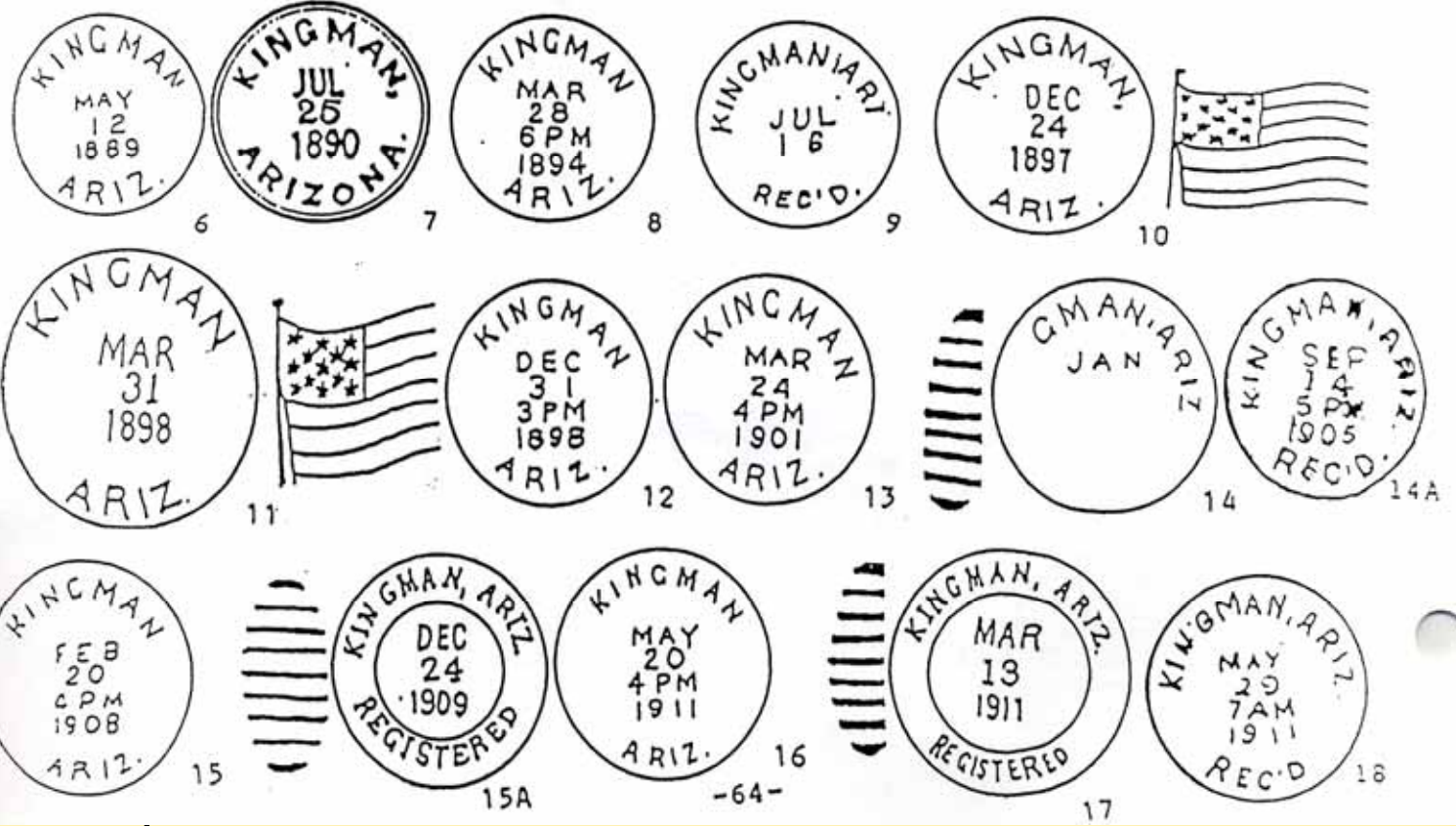
G. L. O. Map, 1921.

In T. 17 N., R. 21 W. Elevation 3,336 feet. Second county seat of Mohave county, 1880. Mohave City was first. Important mining and business town. After Lewis Kingman, locating engineer, Santa Fe R. R. See also Mohave City, Mineral park and Cerbat, each of which has at some time been the county seat. P. O. established March 22, 1883, Edward F. Thompson, P. M.

KINGMAN



KINGMAN, ARIZ. JULY 8 '88 6A



KINGMAN

8 & 13



Arizona Territorial Postmarks

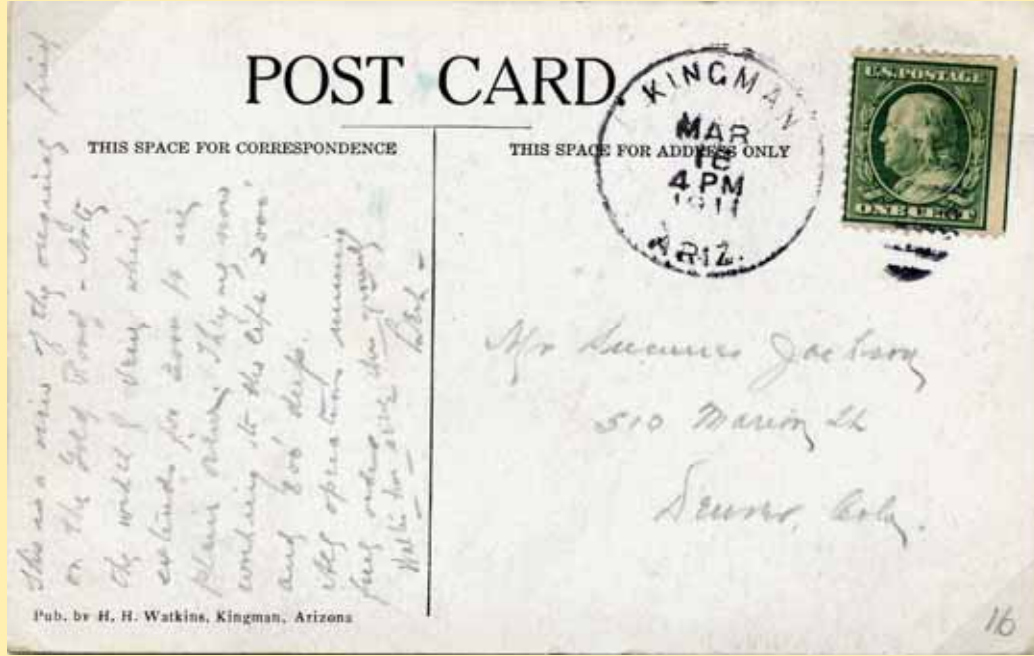


KINGMAN

16



Arizona Territorial Postmarks

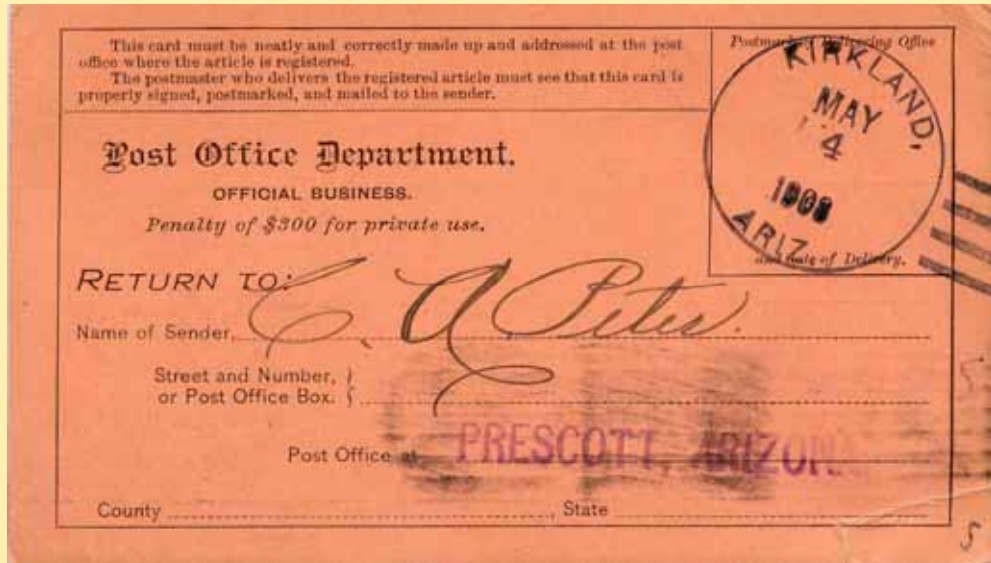


KIRKLAND

3 & 5



Arizona Territorial Postmarks



KYMO



Town
Type Postmark Code Kymo Yavapai Co. (1893—1907)

1 CibN1BBR28½

Kymo Yavapai County

“The two first families to settle here came, one from Kentucky, the other from Missouri. Hence the name “Ky-Mo” (Kimo).” P. O. established April 29, 1893, Robert H. Ferguson, P.M.



1



Arizona Territorial Postmarks

