

LEHI



Arizona Territorial Postmarks

Town

Type Postmark Code Lehi Maricopa Co. (1884—1904)

- 1 C21bS1B32
- 2 C1bS1B31
- 3 C1bN1B28
- 4 C1bN1B28½

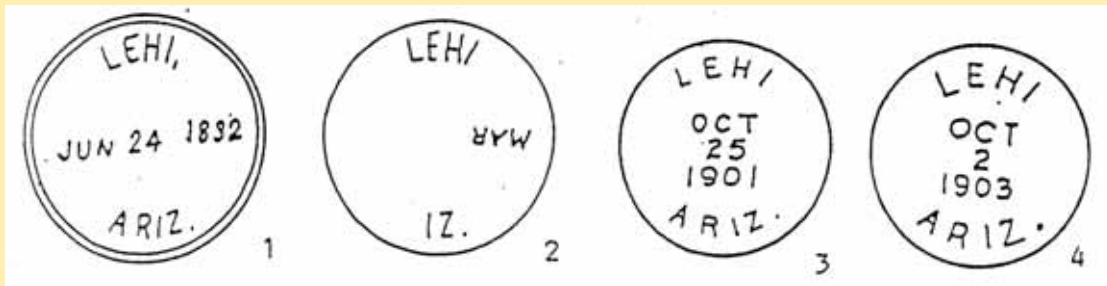
Lehi Maricopa County McClintock Map, 1916; G. L. O., 1921.

In T. 1 N., R. 5 E. Settlement on south bank, Salt river. About 3 miles north of Mesa. Originally called Utahville. An it in *Phoenix Herald*, Jan. 30, 1880, calls it "Bottom City."

"Settlement made Mar. 6, 1877, by Mormons under Daniel' Jones. In July, 1877, Fort Utah was built as a place of refuge. It was formed by an adobe wall, enclosing considerable land with a well in the center. Called Camp Utah or Utahville. Later called Jonesville after the leader. Brigham Young, Jr., suggest name Lehi, which was promptly accepted. The ditch they built was and is today known as the Utah ditch." McClintock.

Lehi was one of the Prophets in the Book of Mormon. He was the father of Nephi whom the Lord commanded "to take his family and go into the wilderness away from his enemies, who would slay him."

An item in *Prescott Miner*, 1878, says: "Lehi, which was sometimes called Mayville." See Jonesville. P. O. established M~ 26, 1882, James L. Patterson, P. M.



3



3



LEHI

4



Arizona Territorial Postmarks



LIVINGSTONE



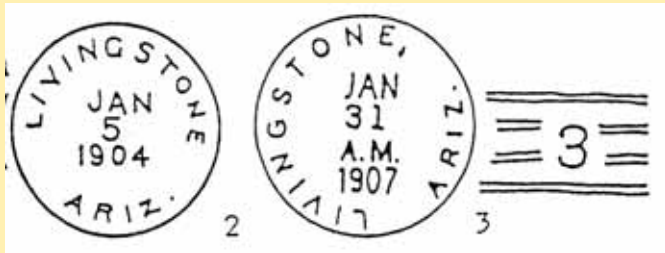
Town

Type **Postmark Code** Livingstone Gila Co. (1896—1907)

- 1 M
- 2 C1bN127½
- 3 Doane Ty. 2/3

Livingstone Gila County Map, Tonto N. F., 1927.

In sec. 36, T. 4 N., R. 13 E. Settlement on Salt river eastern end Roosevelt lake. After an early cattleman and settler. "N! man Howard Livingston moved into Arizona in late Seventies from Washington state with his step-father, Simon W. Kent locating in Globe. In 1888 Livingston filed on a homestead Salt river at mouth of Pinto creek where a small town start Some residents wanted to call it 'Curnott' to honor another settler but they finally decided upon Livingston. With the completion of the dam the place was abandoned; dense thickets Gila willow and mesquite now cover the area." Letter—A. Alexander, Forest Ranger, Roosevelt. P. O. established as Livingston, Sept. 7, 1896, James Curnott, P. M.



2



Arizona Territorial Postmarks



MAINE



Arizona Territorial Postmarks

Town

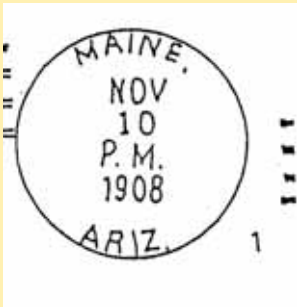
Type Postmark Code Maine Coconino Co. (1907—1911)

1 4-Bar

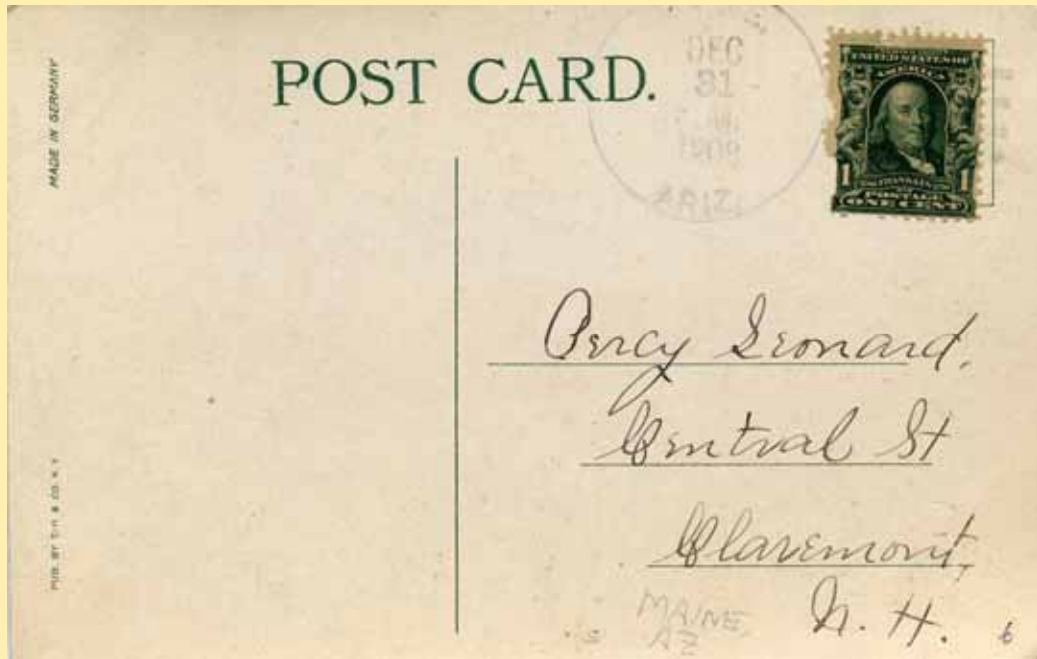
Maine Coconino County U. S. G. S. Map, 1923.

Station A. T. & S. F. R. R., 18 miles west of Flagstaff. "The station was established shortly after sinking of battleship Maine and was named for her." A.G.W.

There is a story that John Dennis who owned the sawmill here came from Maine and gave it that name. Mr. Wells, however, is undoubtedly correct for he had the naming of these places while superintendent of Atlantic and Pacific R. R.



1



MAMMOTH



Arizona Territorial Postmarks

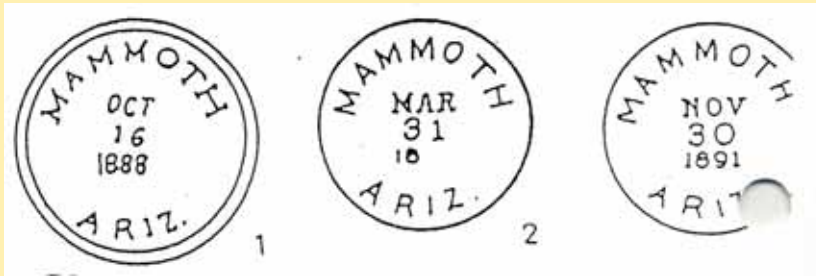
Town
Type Postmark Code Mammoth Pinal Co. (1887—present)

- 1 C21bN1RRB32½
- 2 C1bN1BBR27½
- 3 C1bN1BBR27½
- 4 C1bN1BBR27½
- 5 C1bN1B28½
- 6 C1?T1B30½
- 7 4-Bar

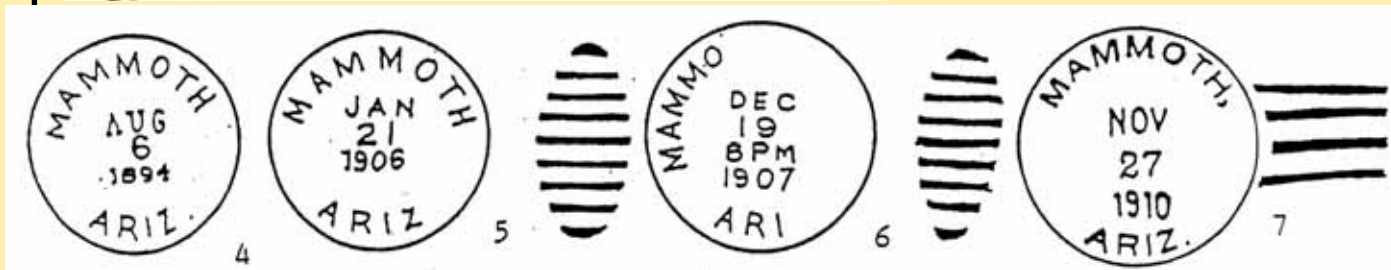
Mammoth Pinal County U. S. G. S. Map, 1923.

In T. 8 S., R. 17 E. Copper camp on San Pedro river east of Black Hills. "Mammoth mine was located here by Frank Schultz in 1881. It was a "mammoth" copper ledge."

P. O. established here May 24, 1895, Felix c. McKinney, P.M.



3



MARICOPA



Town

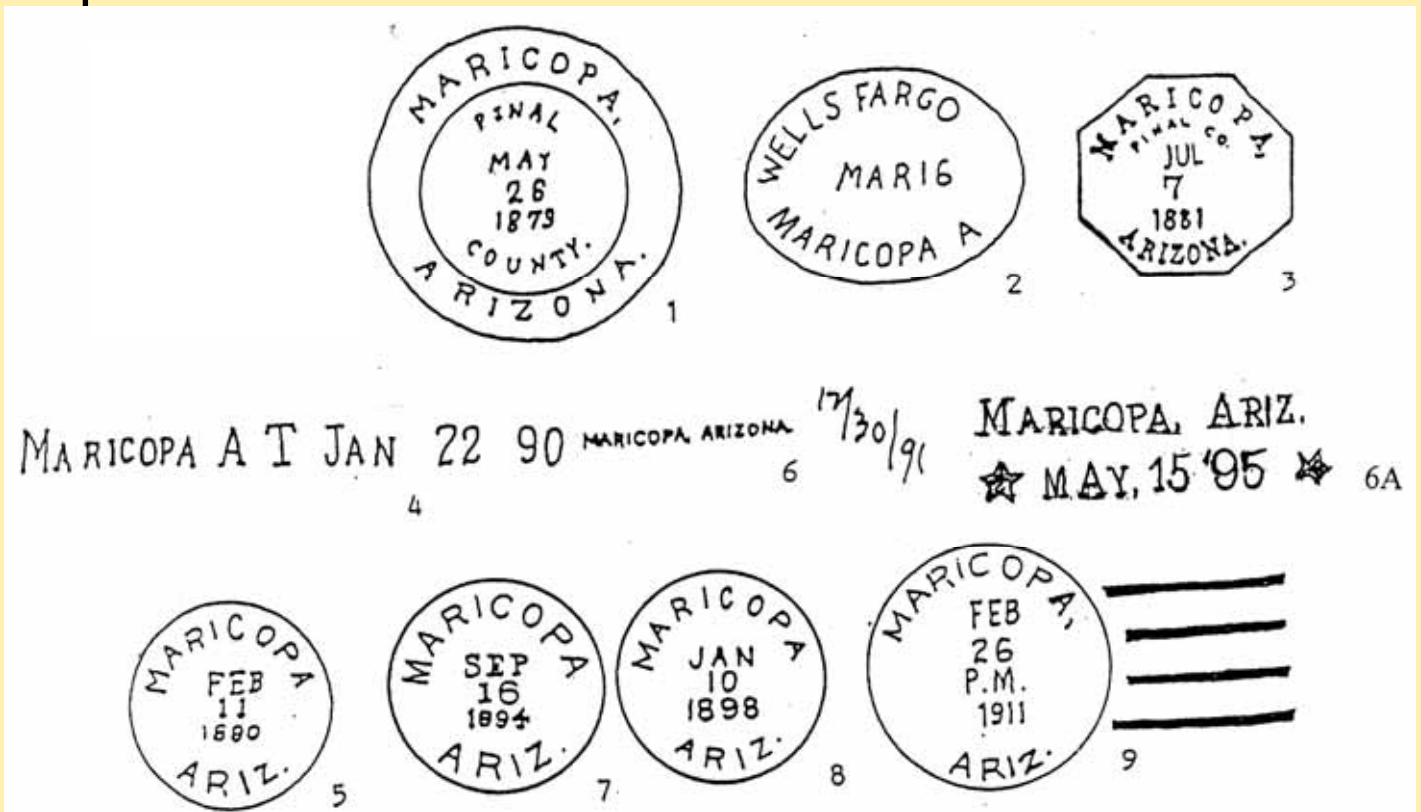
Type	Postmark Code	Maricopa	Pinal Co.	(1879—present)
1	C31e3N1R41		7	C1bN1BBR28
2	EX (W.F.)		8	C1bNB27½
3	OC1e3N1RRB26½		8A	SL
4	SL Reg.		9	4-Bar
5	C1bN1BBR28			
6	SL Reg.			
6A	SL Reg.			

Maricopa Pinal County Smith Map, 1879; Eckhoff, 1880.

In sec. 28, T. 4 S., R. 3 E. Station, S. P. H. H., 10 miles south of Gila river. When Southern Pacific reached here in 1880 the military telegraph station was moved here, the railroad station was opened under this name, and gone was the glory of the old Maricopa Wells Stage station 3 miles south of the Gila river and some 7 miles northwest of present Maricopa station.

Later on when they started to build the branch to Phoenix, the company planned to abandon this Maricopa station and run a branch from a point on the line 4 or 5 miles west of present Maricopa. They first called it Maricopaville, then Heaton, which is present name.

Maricopa was a very lively village when the author was there February, 1880. It was where a change was made to stages for in and the east. Travel to Tombstone was at its peak. Huge twenty-passenger stages rolled away with every seat, inside and out, filled. Great twenty-four-mule freight teams lined the to Tucson and Tombstone. Maricopa was also the getting-off place for Phoenix, Prescott, McDowell, and points north, to military telegraph line ran. Was a busy place, day and with special emphasis on the night life. P. O. established November 26, 1880. Perry Williams, P. M. See Maricopa Maricopaville, and Heaton.



MAMMOTH

8



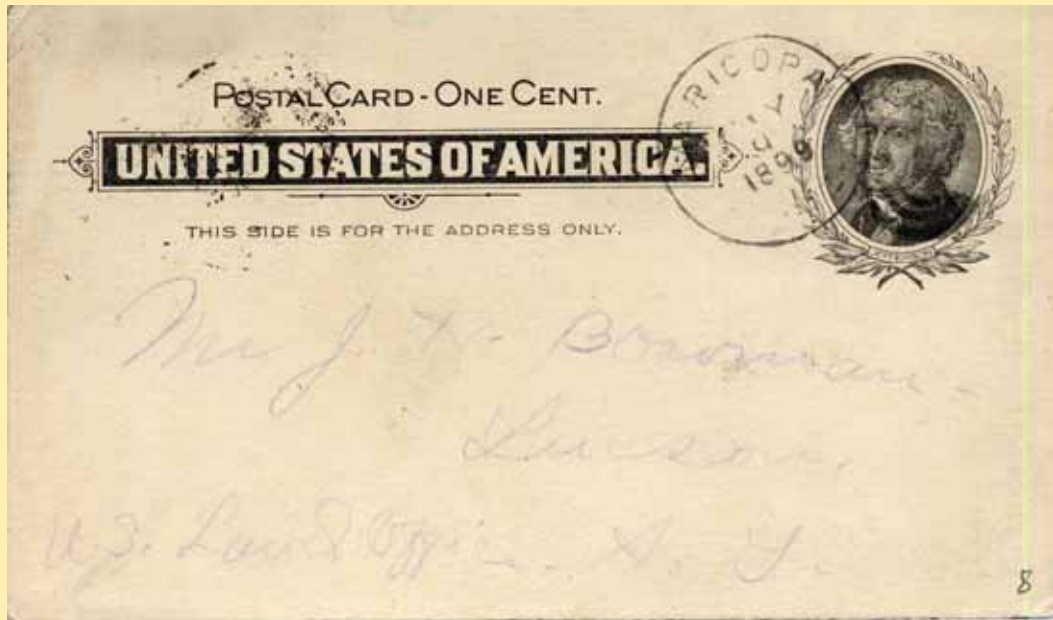
Arizona Territorial Postmarks



Maricopa, May 9 1899

Mr. J. H. Bocoman Tucson, U. S. Land Office A. T.

Phoenix May 9 Dear Sir, I must start on my trip tomorrow night. The Dr. has given us permission. To hope the trip will benefit our little patient. If _____ comes after I am gone - I could use it on return trip. My _____



MARTINEZ



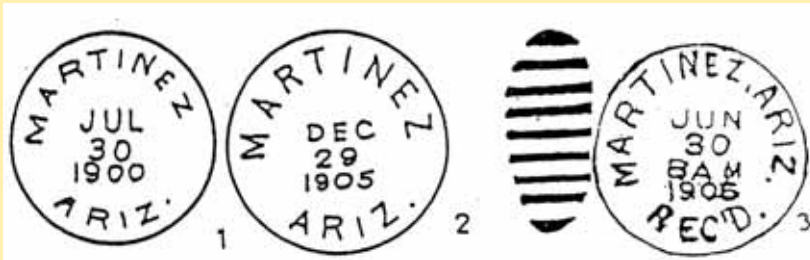
Town

Type Postmark Code Martinez Yavapai Co. (1896—1906)

- 1 C1bN1B27
- 2 C1bN1B29
- 3 C1bT1B28½

Martinez Yavapai County U. S. G. S. Map, 1923.

In T. 10 N., R. 6 E. Old mining camp on Prescott-Phoenix R. R., east side Date creek mountains. In Martinez canyon. P. O. established October 3, 1896, Edward Ziegler, P.M.



2

Martinez, Ariz. 10/28/1903

Secretary Livestock Sanitary Board
Phoenix Arizona

Dear Sir Oct. 27, 03

Please send me a blank application for
butchers license for the balance of this year.

and Oblidge Yours Truly

F. E. Williams, Martinez, Arizona



2

Arizona Territorial Postmarks



MAXTON

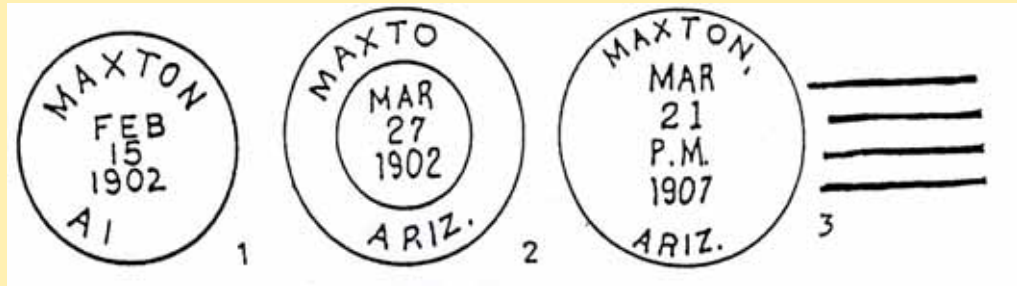


Town

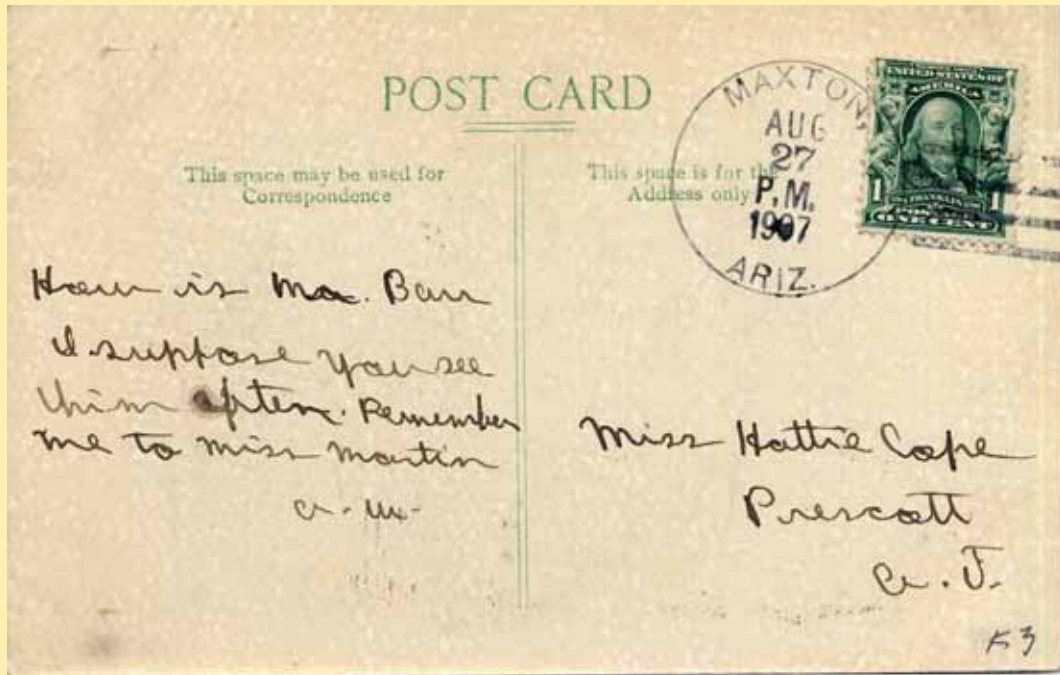
Type Postmark Code Maxton Yavapai Co. (1901- 1916)

- 1 C1bN1b28½
- 2 C31bN1B31
- 3 4-Bar

Maxton Yavapai County G. L. O. Map, 1908; Prescott N. F., 1927.
 Settlement in sec. 11, T. 12½ N., R. 2 W., about 3 miles north of Venezia. P. O. established July 6, 1901, Marilla T. Alwens, P. M.



3



Arizona Territorial Postmarks



MAYER



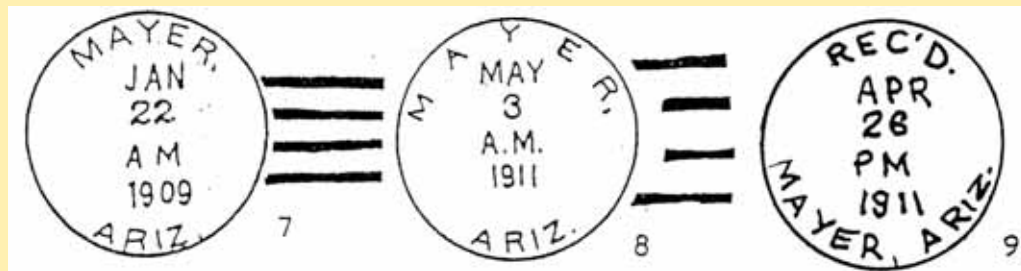
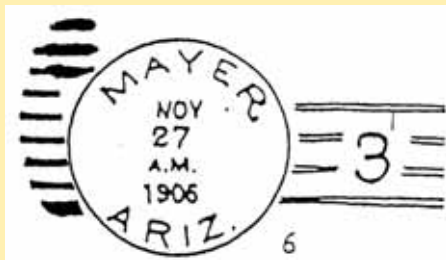
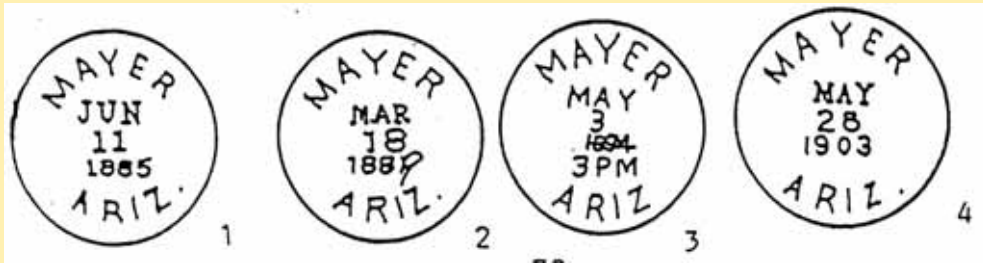
Town

Type Postmark Code Mayer Yavapai Co. (1884—present)

A	M1	6	Doane Ty. 2/3
1	C1bN1BBR27½	7	4-Bar
2	C1bN1BBR27½	8	4-Bar
3	C1bT1B27	9	Cib'16T1B32½
4	C1bN1B28		
5	M2		

Mayer Yavapai County G. L. O. Maps, 1892-1921

In sec. 23, T. 12 N., R. 1 E. Named for Joe Mayer who built a ranch and kept the stage station at this place in late seventies. Was on Black Canyon Stage line, Prescott to Phoenix. Famous for excellence of its meals. On Big Bug creek, also present station on Prescott and Middleton branch A. T. & S. F. R. R. located near old station, 32 miles southeast of Prescott. P. O. established as Mayer, January 11, 1884, Sarah B. Mayer, P.M.



Arizona Territorial Postmarks



MAYER

3 & 4



Arizona Territorial Postmarks



Page _____ REGISTERED PACKAGE RECEIPT. 1536.

POST OFFICE DEPARTMENT.
Official Business.
*A penalty of \$300 is fixed by law
for using this card for other
than Official Business.*

Stamp of Receiving Office

Post Office at _____

Receipt on other side and return this card by NEXT MAIL,
without cover, to _____

Stamp of Dispatching Office

P. M. at Mayer

County of _____

State of Ariz.

Stamp: MAYER APR 4 1892

Stamp: PRESCOTT, ARIZ. JUL 18 1892



MAYER



Marked Kriege 5 -
Mayer Manuscript

Arizona Territorial Postmarks

Page _____ REGISTERED PACKAGE RECEIPT. A penalty of \$500 is fixed by law for using this Card for other than official business.

Post Office Department,
Official Business.

Post Office at _____

Receipt on the side and return this card by NEXT MAIL, without cover,
and date of Return.

To _____

Stamp of Originating Office
Mayer
Aug 29
1891
and date of Dispatch.

P. M. at Mayer

County of _____

State of Arizona Terr

Stamp of Receiving Office
AUSTIN
1891
ARIZ

5-130



MAYER

6 & 8



Arizona Territorial Postmarks



McCABE

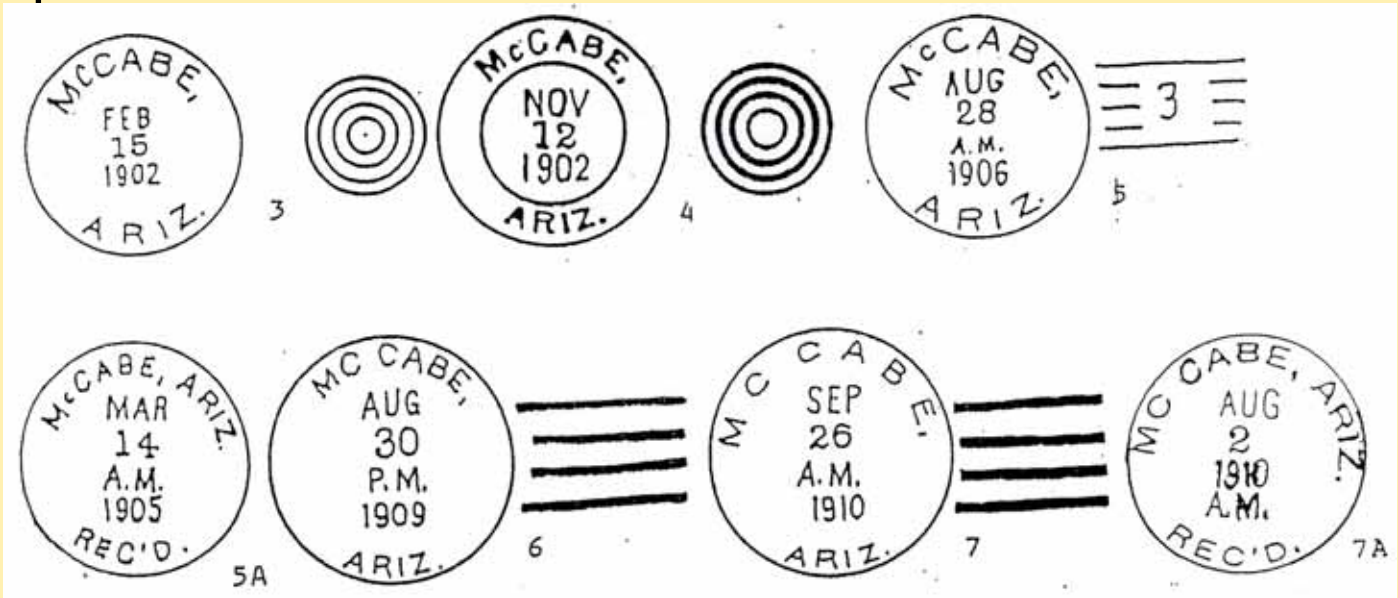
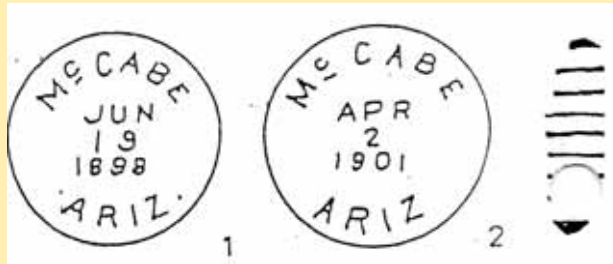


Arizona Territorial Postmarks

Town	Type	Postmark Code	McCabe	Yavapai Co.	(1897—present)
	1	C1bN1B28½		5A	C1b'16T1B30
	2	C1bN2B29		6	4-Bar
	3	C1bN1B28½		6A	C1b'16T1B31
	4	C31bN1B30		7	4-Bar
	5	Doane Ty. 1/3			

McCabe Yavapai County G. L. O. Maps, 1921.

In T. 13 N., R. 1 E. Named for McCabe mine about 5 miles southeast of Prescott. P. O. established December 31, 1895. Mrs. Marion C. Behn, P.M.



McCABE

1 & 5A



Arizona Territorial Postmarks

The Postmaster making up Registered Letters, &c., for dispatch, will fill up the other side of this Bill, and write the name of his Post Office, County, and State in the blank address on this side.
The Postmaster receiving this Bill in Registered Package will at once compare entries with letters, &c., inclosed; make entries on record of registered matter received; stamp postmark below; sign this Bill on other side, noting any errors, and return it to the mailing Post Office without cover.
A penalty of \$300 is fixed by law for using this card on other than official business.

Post Office Department.
OFFICIAL BUSINESS. Post Office at

RETURN TO:

Postmaster at *Mayer*
County of *Navajo*
State of *Arizona*

Stamp here (date of Post Office)
MCCABE
JUL
18
1899
and date of receipt.
TRIL

This card must be neatly and correctly made up and addressed at the post office where the article is registered.
The postmaster who delivers the registered article must see that this card is properly signed, postmarked, and mailed to the sender.

Post Office Department.
OFFICIAL BUSINESS.
Penalty of \$300 for private use.

RETURN TO: *J. S. Robinson.*

Name of Sender, _____
Street and Number, }
or Post Office Box, }

Post Office at **PRESCOTT, ARIZ.**

County _____ State _____

Postmark of Delivery
REC'D.
NOV 18 1904
MCCABE, ARIZ.
and date of Delivery.

5A





Arizona Territorial Postmarks



McCABE

6



McDOWELL



Arizona Territorial Postmarks

Town

Type Postmark Code
1905-09; 1913-1917)

McDowell

Maricopa Co.

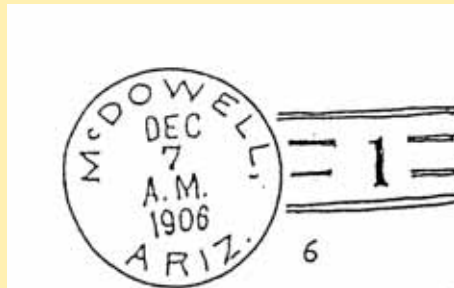
(1869-91; 1896-97; 1900-01;

- 1 M
- 2 C31eA1BBR24
- 3 C41fN1B31
- 4 C41fN1BV33½
- 4A C31b17N1B28
- 5 C1bN1BBR28
- 6 Doane Ty. 2/1

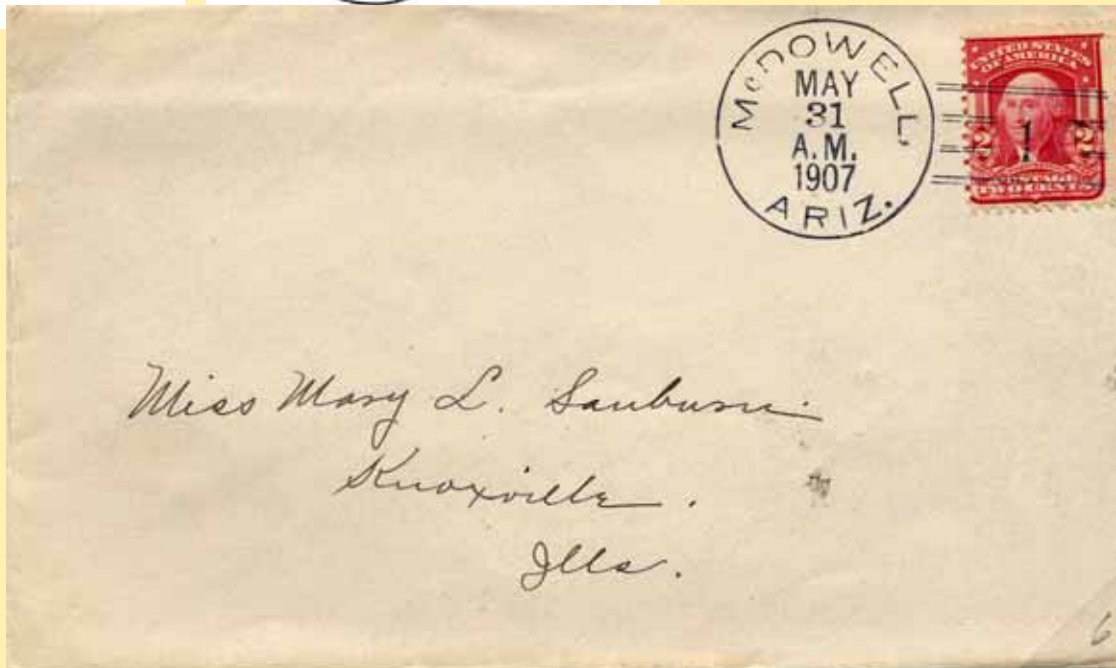
McDowell

Maricopa County

Also called Ford McDowell. First post office August 9, 1869. James A. Moore P. M.



6



MESA



Arizona Territorial Postmarks

Town

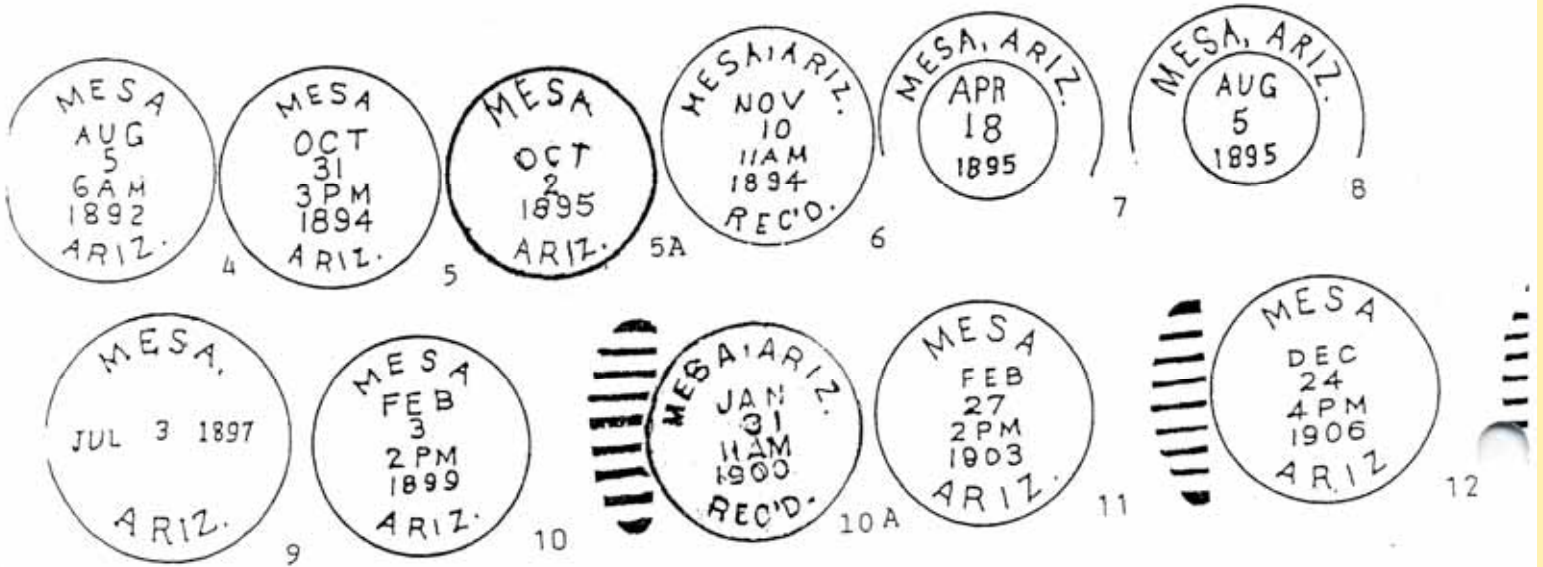
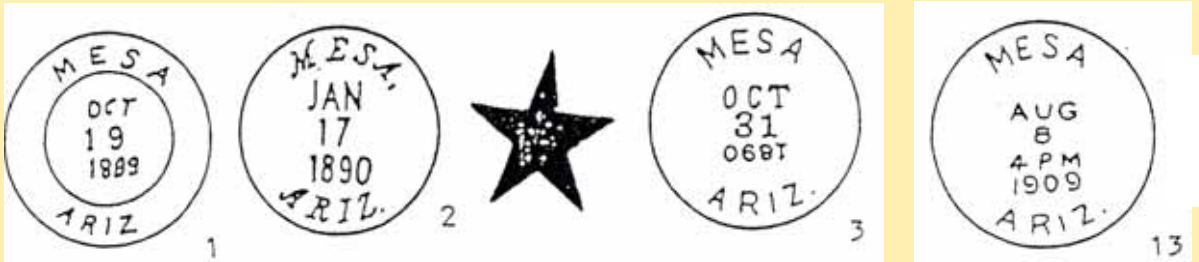
Type Postmark Code Mesa Maricopa Co. (1889—present)

1	C31bN1B27	7	C31bN1B29
2	C1bN1RRB26	8	C31bN1B30
3	C1bN1BRR27	9	C1bS1RRB31½
4	C1bT1B29	10	C1bT1B28
5	C1bT1B28½	10A	C1bT1B28
5A	C1bT1B27½	11	C1bT1B28½
5B	M (REG)	12	C1bT1B29
6	C1b16T1B28	13	C1bT1B29

Mesa Maricopa County Smith Map, 1879; Eckhoff, 1880; G. L. O., 1921

Sp., "table." Elevation 1,273 feet. Town in T. 1 N., R. 5 E., about 20 miles southeast of Phoenix on Arizona-Eastern R. R., 3 miles from Salt river. Established Feb. 1878 by Mormon colonists from Salt Lake City, Utah. So called because it was located on a plateau or mesa somewhat above the valley. Incorporated July 5, 1883. P. O. established as Mesa Jan. 19, 1889, George Passey, P. M. First called Zenos, q. v. Then Mesaville. Mesa City on Smith map, 1879.

The land on which the town now stands was located first in May, 1878, by T. C. Serrine who deeded it to three Trustees: C. I. Robson, G. W. Serrine, and F. M. Pomeroy who named and platted it. All streets were 130 feet wide. Incorporated July 15, 1883. A. F. McDonald, first mayor. First called Hayden, because for a time mail went to Hayden Ferry. Postal authorities first refused to allow the name Mesa for a postoffice because of a Mesaville in that region. That town died however and Mesa came into its own. Census of January 4, 1894, gave it 648 persons.

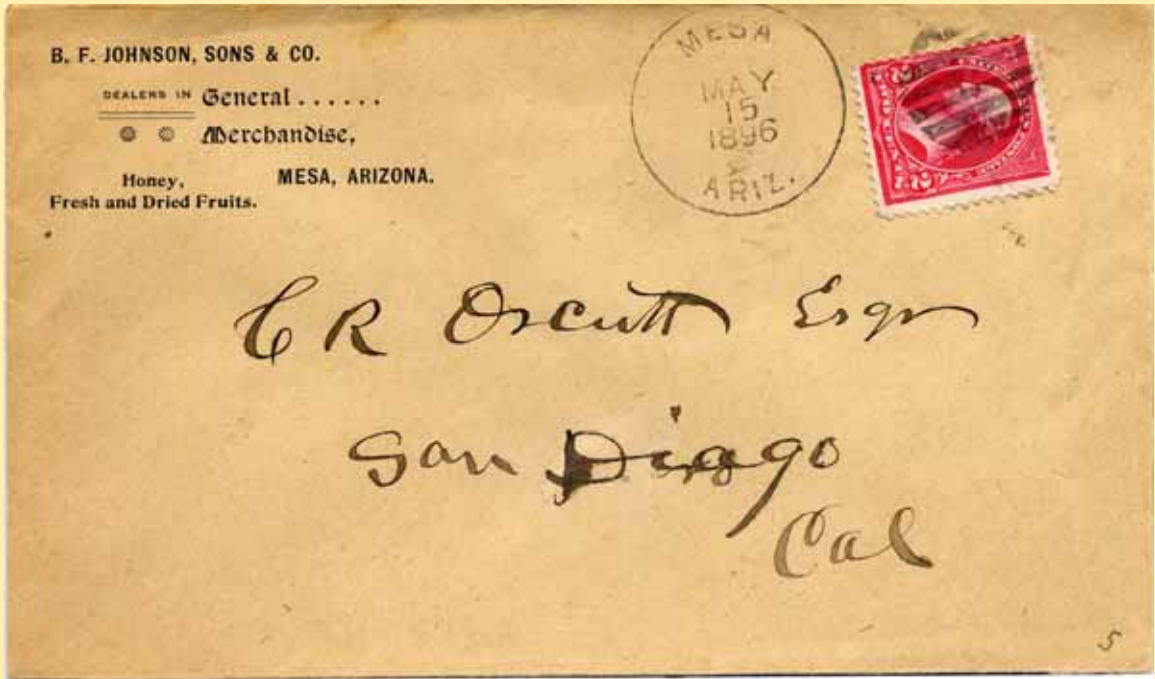


MESA

5 & 7



Arizona Territorial Postmarks



The Postmaster making up Registered Letters, &c., for dispatch, will fill up the other side of this Bill, and write the name of his Post Office, County, and State in the blank address on this side. The Postmaster receiving this Bill in Registered Package will at once compare entries with letters, &c., inclosed; make entries on record of registered matter received; stamp postmark below; sign this Bill on other side, noting any errors, and return it to the mailing Post Office without cover. A penalty of \$300 is fixed by law for using this card on other than official business.

Post Office Department.
 OFFICIAL BUSINESS Post Office at

RETURN TO:

Postmaster at *Mayer*
 County of *Imperial*
 State of *Arizona*

Stamp here name of Post Office
 MESA, ARIZ.
 APR 18
 and date of receipt.

7-6



MESA

8 & 10



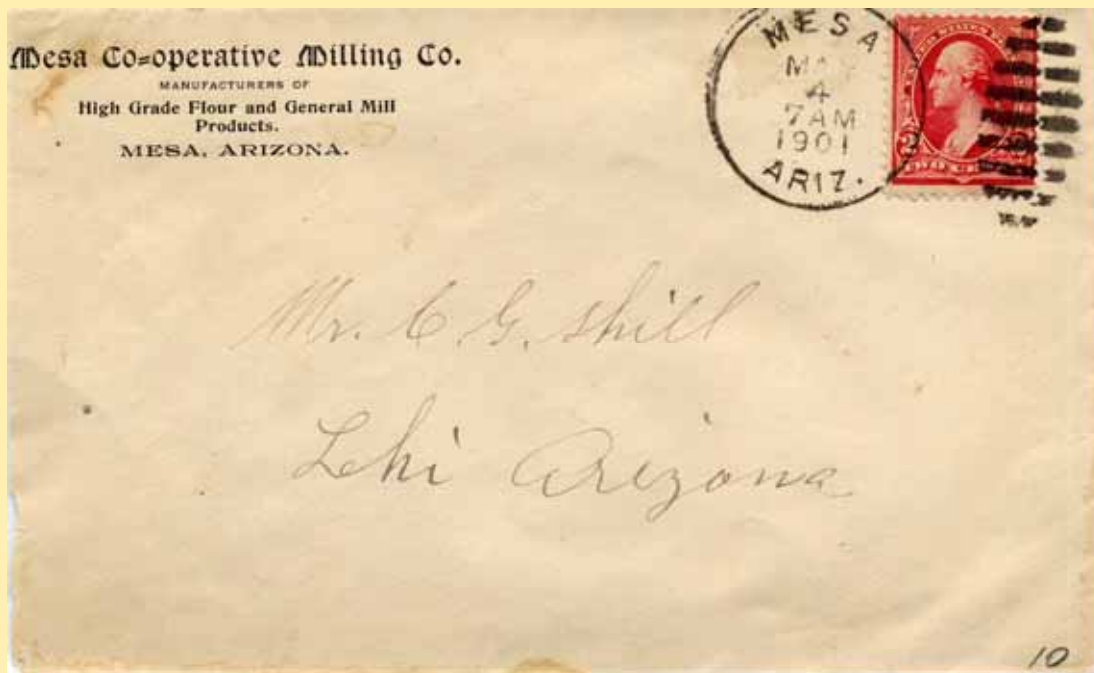
Arizona Territorial Postmarks

The Postmaster making up Registered Letters, &c., for dispatch, will fill up the other side of this Bill, and write the name of his Post Office, County, and State in the blank address on this side.
The Postmaster receiving this Bill in Registered Package will at once compare entries with letters, &c., inclosed; make entries on record of registered matter received; stamp postmark below; sign this Bill on other side, noting any errors, and return it to the mailing Post Office without cover.
A penalty of \$300 is fixed by law for using this card on other than official business.

Post Office Department.
OFFICIAL BUSINESS. Post Office at *MESA ARIZ.*

RETURN TO:
Postmaster at *Mesa*
County of *Maricopa*
State of *Arizona*

Stamp here name of Post Office
MESA ARIZ.
AUG 5
and date of receipt.

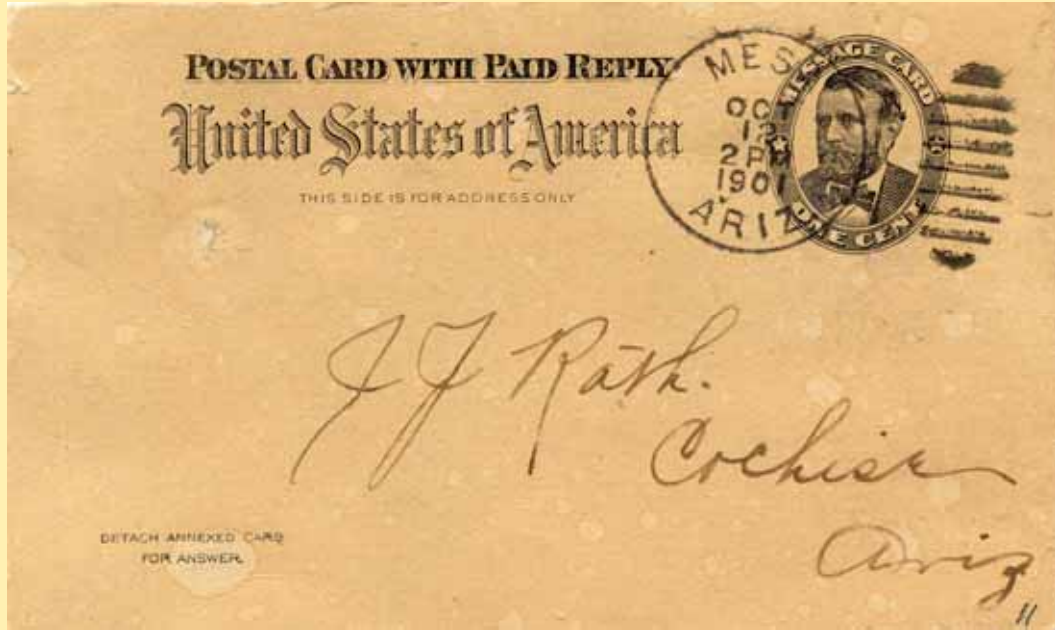


MESA

11 & 12



Arizona Territorial Postmarks



Mesa Nov 14, 1907

Mrs. L. L. Cason Independence, Louisiana

Dear friend I am to tired to write you today, though I should like to do do. Went to the Phoenix fair Fri. and back to the city yesterday. Had a good time. Am well. Do let me here as often as you can. I hope your not trying to do to much. You las: letter was much appreciated. Why not say you are coming west right away and limmediatly do so? I mean of course on a visit to me. I am so comfortable here. Ample room for two. With love to all, Annie.



MESA

13



Arizona Territorial Postmarks



METCALF



Arizona Territorial Postmarks

Town

Type Postmark Code
Co. (1909-1936)

Metcalf

Graham/Greenlee Co.

(1899-1909; Greenlee

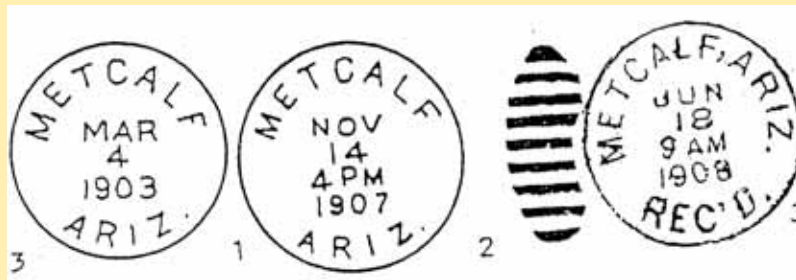
- 1 C31bN1B28
- 2 C1bT1B29½
- 3 C1bT1B28

Metcalf

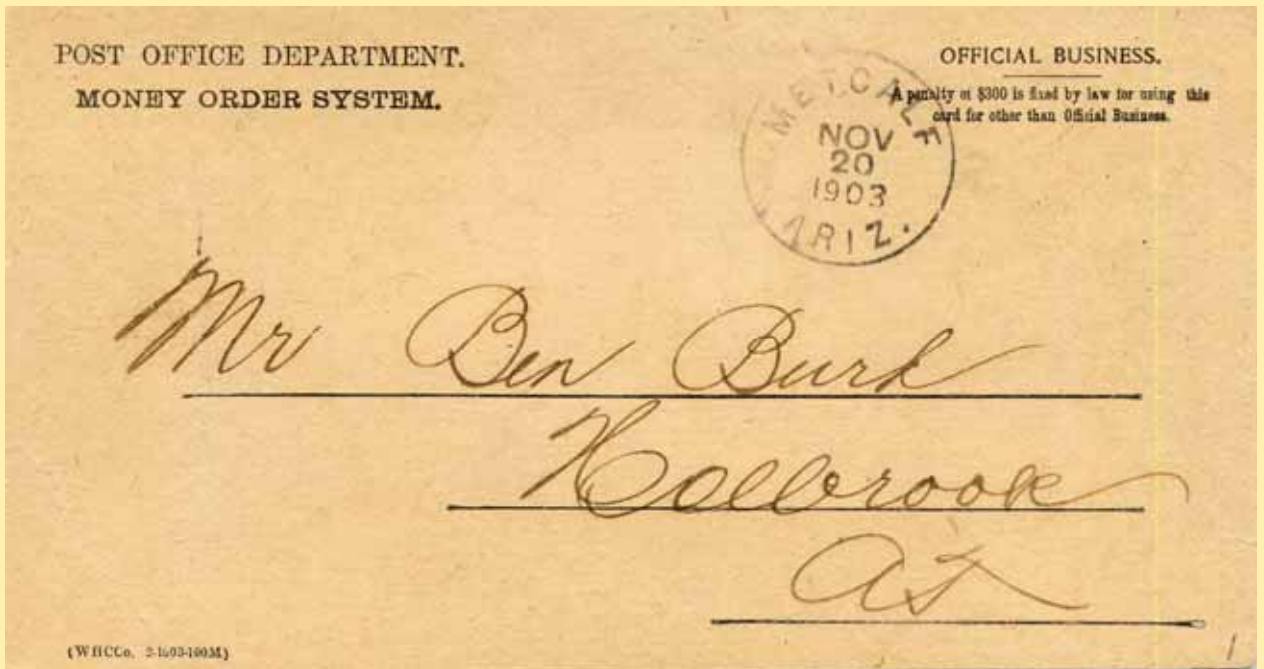
Graham/Greenlee County

U. S. G. A. Morenci Quad., 1915.

Elevation 4,431 feet, copper camp on branch railroad up Chase creek. About 8 miles northwest of Clifton. Named for Robert B. Metcalf, an early mining man who came to this camp 1872. One of the first owners of the Longfellow mine.



1



METCALF



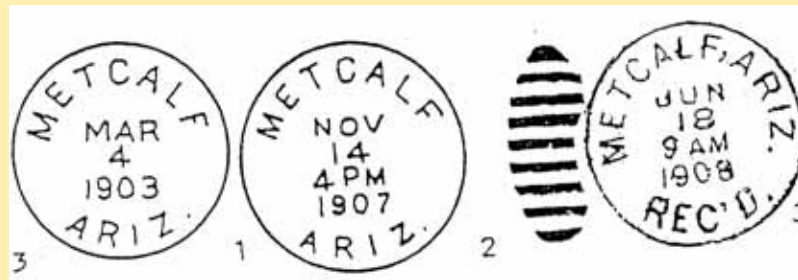
Town

Type Postmark Code Metcalf Graham/Greenlee Co. (1899-1909; Greenlee Co. (1909-1936))

- 1 C31bN1B28
- 2 C1bT1B29½
- 3 C1bT1B28

Metcalf **Graham/Greenlee County** **U. S. G. A. Morenci Quad., 1915.**

Elevation 4,431 feet, copper camp on branch railroad up Chase creek. About 8 miles northwest of Clifton. Named for Robert B. Metcalf, an early mining man who came to this camp 1872. One of the first owners of the Longfellow mine.



2



Arizona Territorial Postmarks



METEOR



Town
Type Postmark Code Meteor Coconino Co. (1906—1912)

1 Doane Ty. 3/1

Meteor Coconino County U. S. G. A. Map, 1921.
 Elevation 6,900 feet, often called Meteor Crater. First post office April 27, 1906, to April 15, 1912. Samuel J. Holsinger P.M.



1



Arizona Territorial Postmarks



MIAMI



Arizona Territorial Postmarks

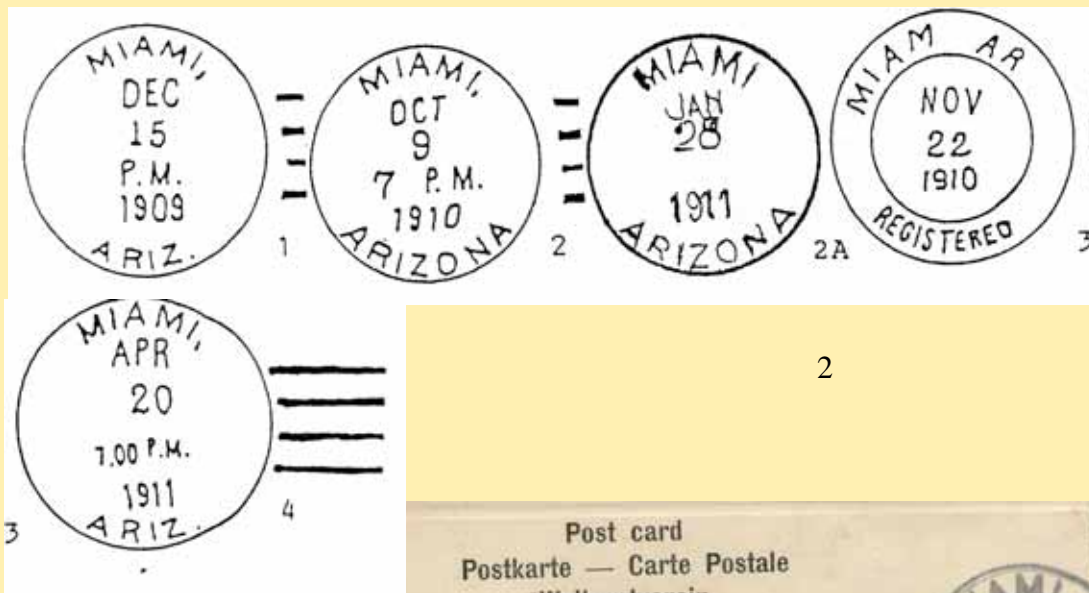
Town

Type Postmark Code Miami Gila Co. (1908—present)

- 1 4-Bar
- 2 4-Bar
- 2A 4-Bar, broken
- 3 C31b'17N1B31
- 4 4-Bar
- 5 C1bT1B29
- 6 Time Cummins M

Miami Gila County

Elevation 3,408 feet. Town about five miles west of Globe. Named by James F. Gerald for stockholders of Miami Milling who were from this valley in Ohio. Settled, 1907. The *Arizona Republican*, August 30, 1929, says: "The name was for a girl, Mima Tune, who married 'Black Jack' Newman, who claimed to have discovered the mine. Jack sold his claims to the Lewisohn interests and asked that it be named for his wife. Jack could write very well and the word Mima looked like Miami, so it named that way." A rather doubtful story.



MIAMI



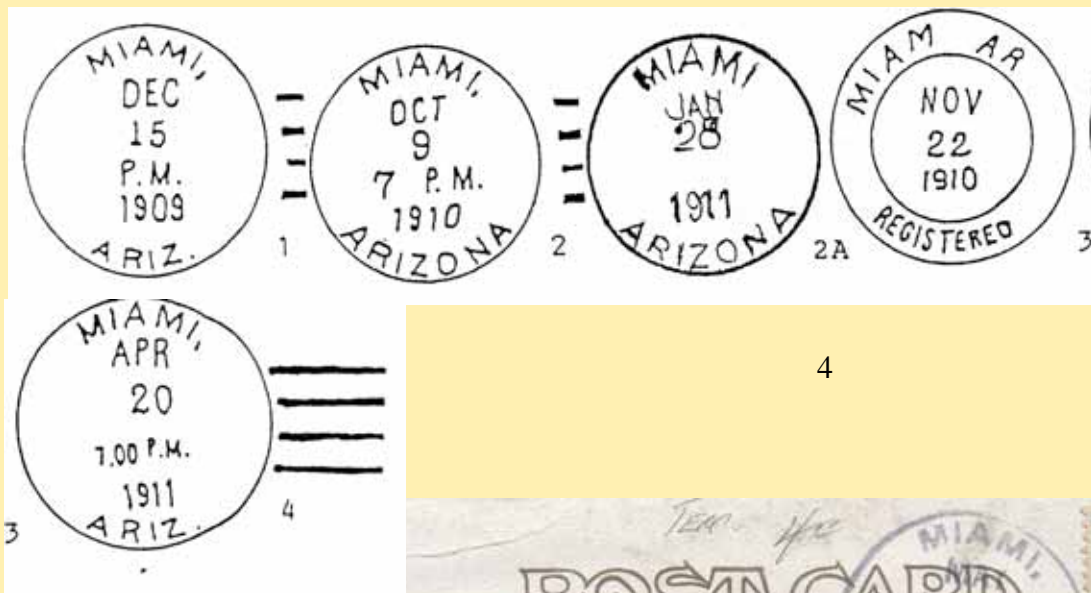
Arizona Territorial Postmarks

Town
Type Postmark Code Miami Gila Co. (1908—present)

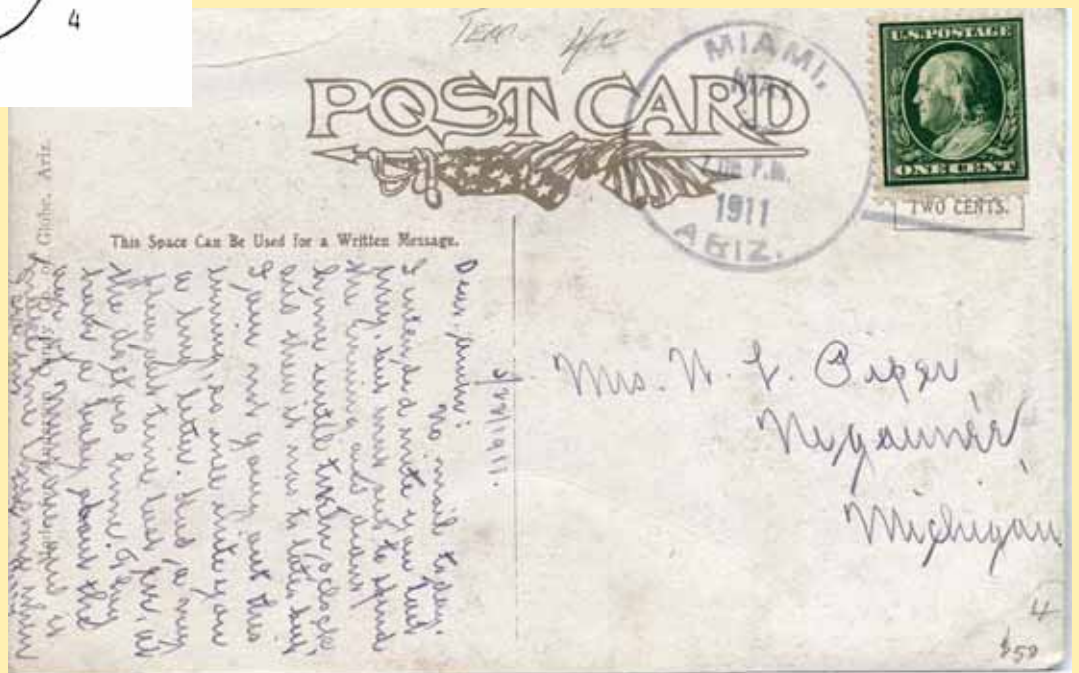
- 1 4-Bar
- 2 4-Bar
- 2A 4-Bar, broken
- 3 C31b'17N1B31
- 4 4-Bar
- 5 C1bT1B29
- 6 Time Cummins M

Miami Gila County

Elevation 3,408 feet. Town about five miles west of Globe. Named by James F. Gerald for stockholders of Miami Milling who were from this valley in Ohio. Settled, 1907. The *Arizona Republican*, August 30, 1929, says: "The name was for a girl, Mima Tune, who married 'Black Jack' Newman, who claimed to have discovered the mine. Jack sold his claims to the Lewisohn interests and asked that it be named for his wife. Jack could write very well and the word Mima looked like Miami, so it named that way." A rather doubtful story.



4



MINERAL PARK



Town

Type Postmark Code Mineral Park Mohave Co. (1872—1904; 1910—1912)

1	M	6	C41aN1B28
2	C1bA1BBR24½	7	CleS1B28½
3	CleN1RRB25	8	C1bN1B27
4	C1bN1RRB28	9	C12b13S1B33
5	C1bN1B27½	10	C1bN1BBR28

Mineral Park Mohave County Eckhoff Map, 1880.

In T. 22 N., R. 18 W., town in Sacramento valley, Kingman branch A. T. & S. F. B. B., about 12 miles northwest of Kingman. Originally called Mineral Park. Changed to Mineral about 1889.

“Mineral Park was second county seat of Mohave county, Mohave City being first. Originally called Mineral Park because of a little park-like group of cedars near the town site and mine.” McFarland.

“At Mineral Park, county seat 8 miles north of Cerbat, there is a 5-stamp quartz mill and a population of about 200. Water strongly impregnated with unpalatable minerals. Drinking water brought from a canyon some miles distant.” Hinton. P. O. established as Mineral Park, Dec. 23, 1872, Alder Randall, P. M.

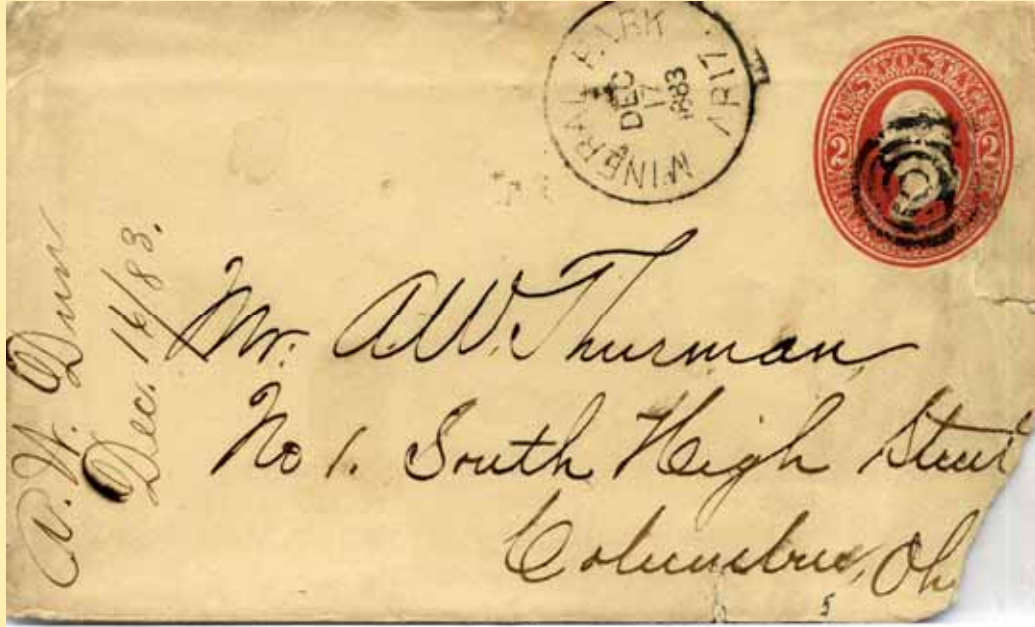


MINERAL PARK

5



Arizona Territorial Postmarks



Mineral Park Dec. 17, 1883

Mr. A. W. Thurman
No. 1 South High Street Columbus, Ohio
A. W. Dun Dec. 16/83

Mineral Park A. T. Dec. 16th 1883

Dear Allen

Yours of the 7th inst , containing drafts for \$200.00. was recived. I thought it better to pay the whole tax before the time was up, so made up the required amount my self & with \$60 dollars I borrowed from Skeu . The \$200.00 recd. covers present expenses, But I will need \$375 to \$400 at the end of the month. Speus hand still troubles him and I am afraid another man besides the one now at work will have to be employed to help finish the hole. Assements this work with our salaries will amount to something like the above. I was glad to hear you had concluded to leave instead of buying the peoperty, as I think it much better. With love to Hattie & the children.

Your affecteant concern A W Dun



MINERAL PARK

5



Arizona Territorial Postmarks



Mineral Park A.T.
Dec 16th 1882
Dear Allen
Yours of the 7th inst. containing drafts for \$200.00, was received. I thought it better to pay the whole tax before the time was up, so made up the required amount myself with \$60 dollars I borrowed from Allen. The \$200.00 recd. covers present expenses, but I will need \$375 or \$400 at the end of the month. Spies land still troubles him and I am afraid another man besides the one now at work, will have to be employed to help

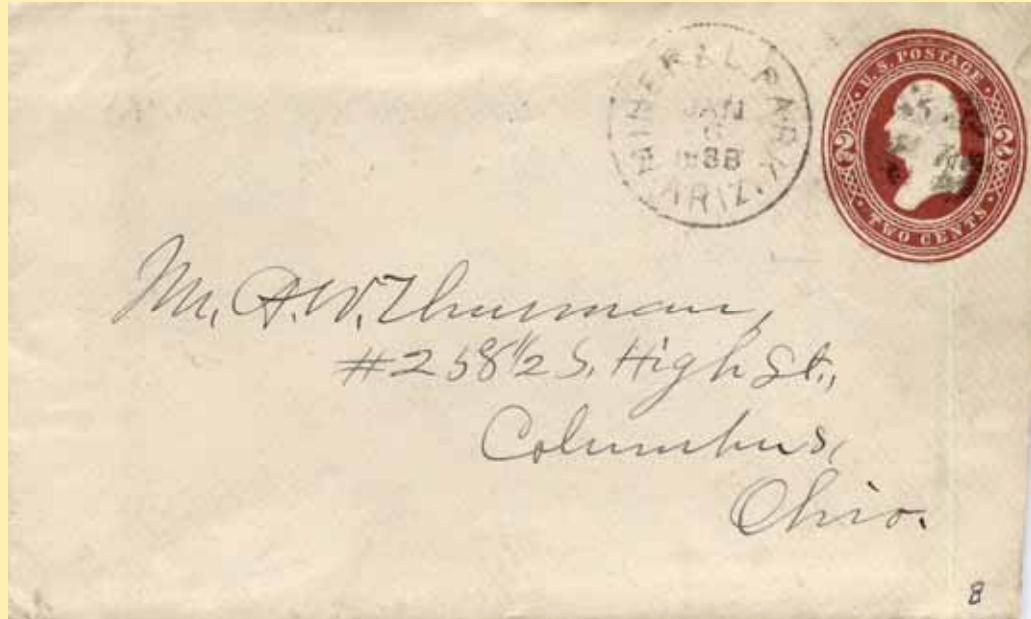
finish the M.C. agreement. This work with our salaries will amount to something like the above, I was glad to hear you had concluded to lease instead of buying the property, as I think it much better. With love to Nettie & the children
Your affectionate cousin
Edw. Davis

MINERAL PARK

8



Arizona Territorial Postmarks



Mineral Park Jan. 6, 1888

Mr. A. W. Thurman
#258 1/2 High St.,
Columbus, Ohio

T. W. Sperr Jan. 4 / 88

Mineral Park, A. T. Jan. 4, 1888
Mr. A. W. Thurman, Columbus, Ohio

Dear Sir;

Yours of the 29th ult, has been received. I shall explain to Mr. Watkins.

I am glad to learn of Col. Smith's promotion. That mill near the old Washington & Chicago claims, has run a few hours nearly every day for the last two months; but has not run at all for the last week or ten days. You will see what it is when you come.

In relocating, you are not always secure; for, if others get onto the ground with you, your have to divide up with them if they choose to make you do so. Angus relocated the claim three years ago; and I relocated it last year when another also relocated it as I explained to you in mine of Dec. 13, If the assessment work is not done this year, it will be open for relocation again next year.

Hoping that maters will be arranged to let you come here at an early day.

I remaine, Yours very truly, T. W. Sperr

We are having a big snow storm. Six inches of snow fell this afternoon.



MINERAL PARK

8



Arizona Territorial Postmarks

Mineral Park, Ariz., June 4, 1885,

Mr. A. S. Thurman,
Columbus, Ohio.

Dear Sir:

Yours of the 29th ult. has been received, I shall explain to Mr. Watkins.

We were glad to learn of Col. Smith's promotion, in that will mean the old Washington & Chicago Clinic, has run a few hours nearly every day for the last two months; but has not run at all for the last week or ten days. You will see what it is when you come.

In relocating, you are not always secure; for, if others get onto the ground with you, you have to divide up with them if they choose to make you do so. Angus relocated the claim three years ago; and I relocated it last year when another also relocated it as I explained to you in mine of Dec. 13. If the assessment work is not done this year, it will be open for relocation again next year.



MINERAL PARK

8



Arizona Territorial Postmarks



Hoping that matters will be arranged to let
you come here at an early day.
Remain,
Yours very truly,
F. W. Spencer.
We are having a big snow storm, six
inches of snow fell this afternoon.

MINERAL PARK

10



Arizona Territorial Postmarks



MORENCI



Town

Type Postmark Code
Co. 1909-present)

Morenci

Graham/Greenlee Co.

(1884-1909; Greenlee

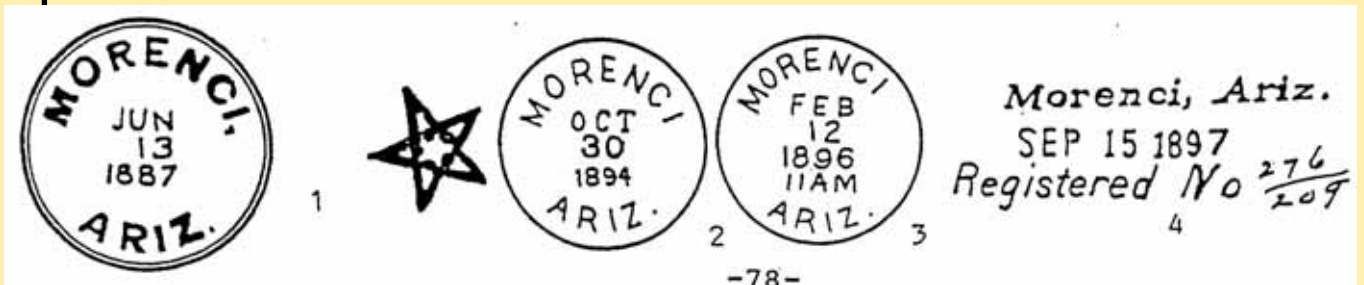
1	C21bN1B33	6	C21b'16T1B25
2	C1bN1BBR27½	7	C1bT1B28
3	C1bT1B27	8	C1b'16T1B29
4	SL (REG)	9	C1bT1B29
4A	C1bT1B28½		
5	C1b'15S1B29		

Morenci
1923.

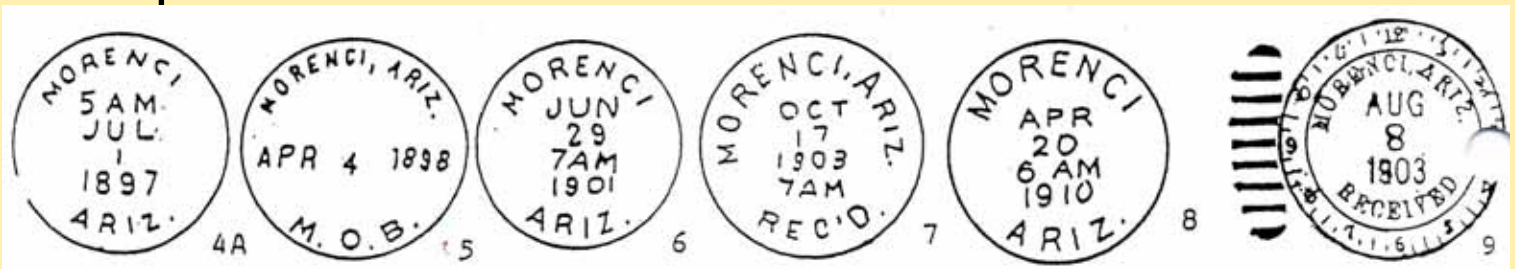
Graham/Greenlee County

G. L. O. Map, 1892-1921; U. S. G. S.,

Elevation 4,837 feet, in T. 4 S., R. 29 E. Mining camp on Gold Gulch about 6 miles northwest Clifton at end Morenci Southern Narrow Gauge R. R. Named by Mr. Church of Detroit Copper Co., who came from Morenci, Mich. First called Joys Camp after Capt. Joy, early settler and prospector, q.v. P. O. established March 3, 1884, George W. Davidson, P.M.



-78-

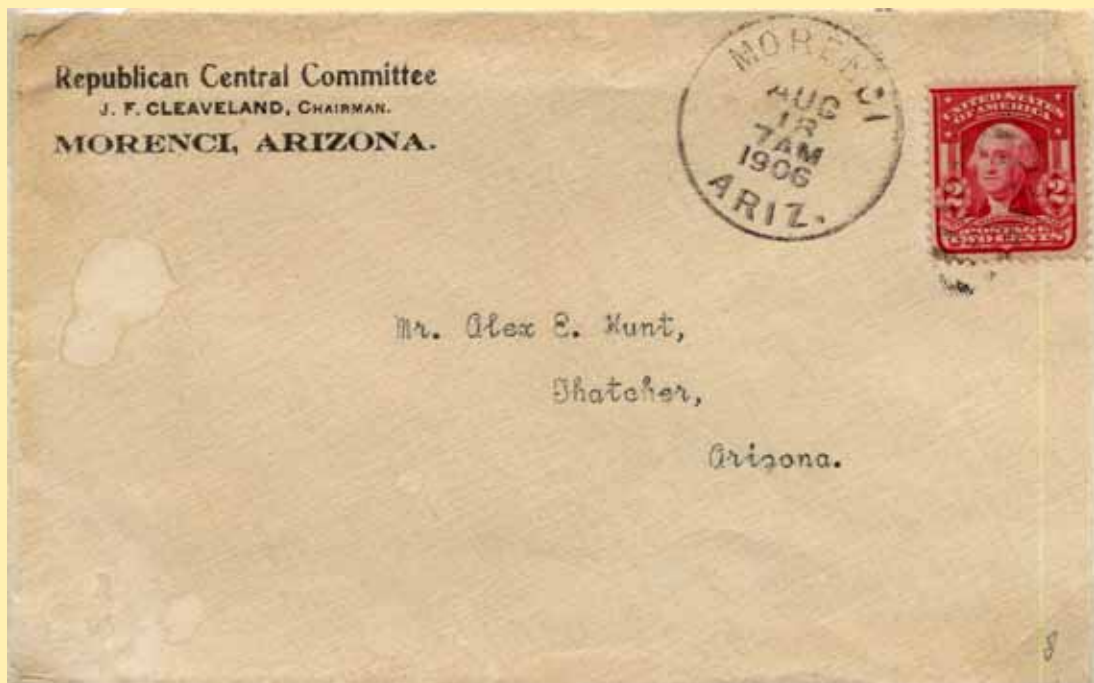


MORENCI

6 & 8



Arizona Territorial Postmarks



MORRISTOWN



Arizona Territorial Postmarks

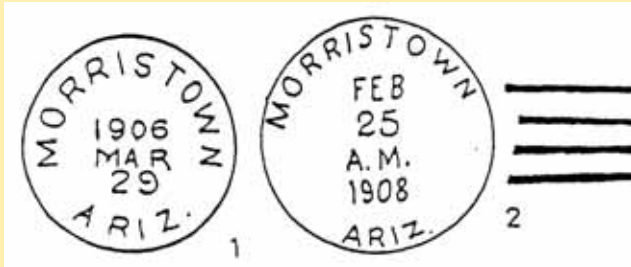
Town

Type Postmark Code Morristown Maricopa Co. (1897—present)

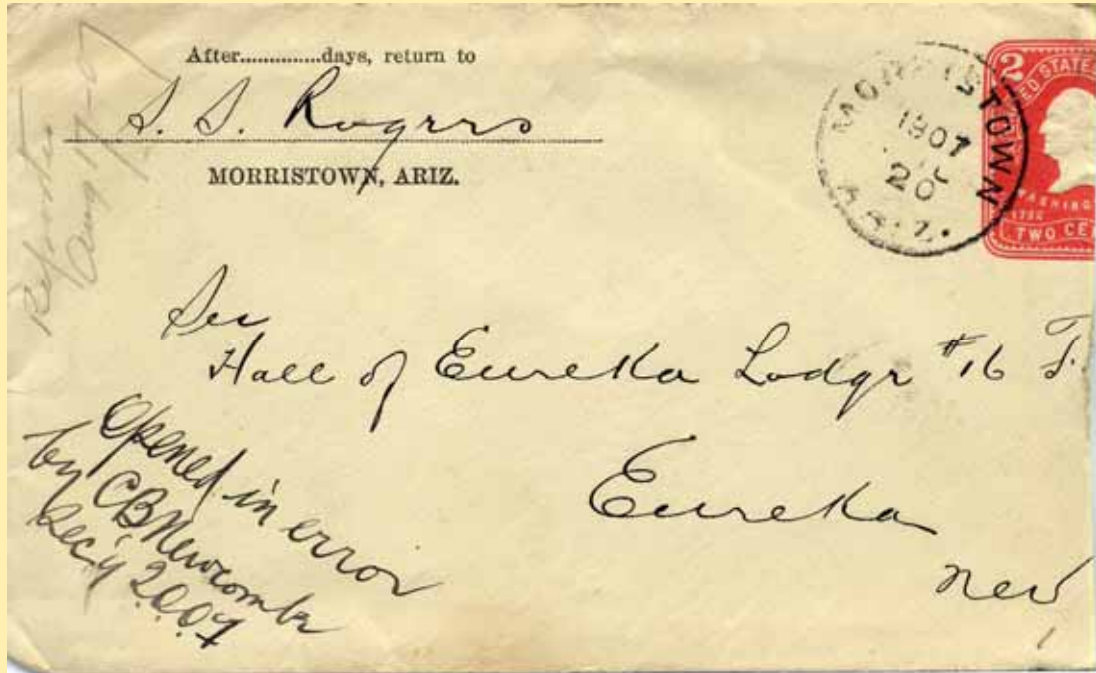
- 1 C1bN1B27'
- 2 4-Bar

Morristown Maricopa County G. L. O. Map, 1921.

On A. T. & S. F. R. R., originally known as Hot Springs Junction. P. O. and original point of departure for Hot Springs stages. Named after first inhabitant, George Morris, who has a store here. P. O. established December 30, 1879, Lee H. Landis, P. M.



1



MORRISTOWN



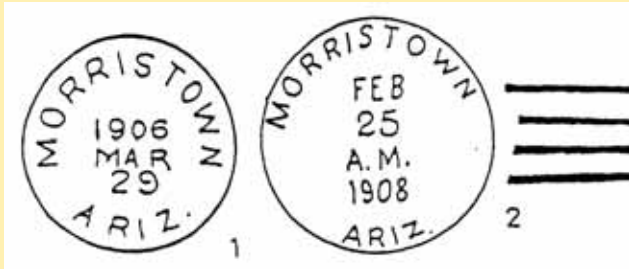
Town

Type Postmark Code Morrystown Maricopa Co. (1897—present)

- 1 C1bN1B27'
- 2 4-Bar

Morrystown Maricopa County G. L. O. Map, 1921.

On A. T. & S. F. R. R., originally known as Hot Springs Junction. P. O. and original point of departure for Hot Springs stages. Named after first inhabitant, George Morris, who has a store here. P. O. established December 30, 1879, Lee H. Landis, P. M.



1



Arizona Territorial Postmarks



NELSON



Arizona Territorial Postmarks

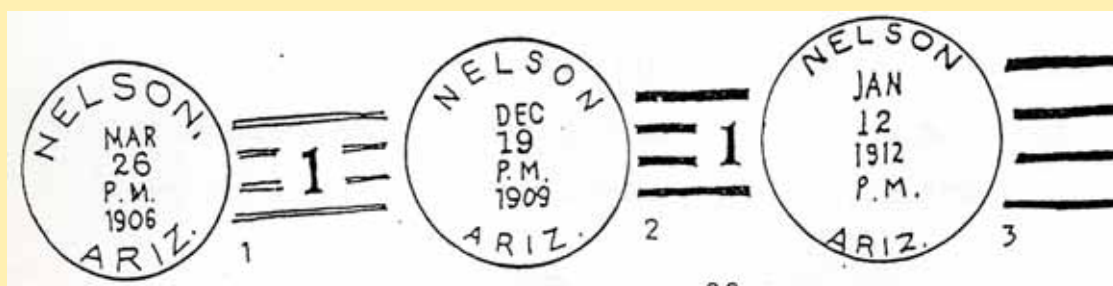
Town

Type Postmark Code Nelson Mohave/Yavapai Co. (1904-1911; Yavapai Co. 1911-1954)

- 1 Doane Ty. 2/1
- 2 Doane Ty. 3/1
- 3 4-Bar

Nelson Mohave/Yavapai County G. L. O. Map, 1921.

In T. 25 N., R. 10 E. Station A. T. & S. F. R. R. Ten miles east of Peach Springs. "After Fred Nelson, former division superintendent of roadway, A & P. R. R. 1886." P. O. established March 23, 1904, William Carey, P. M.



1



OCTAVE

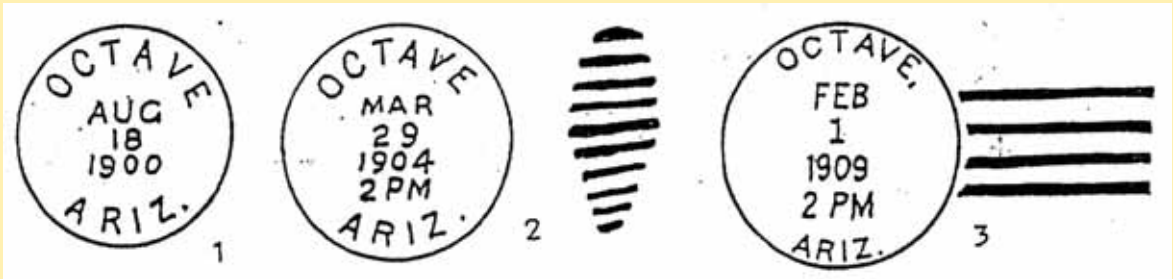


Arizona Territorial Postmarks

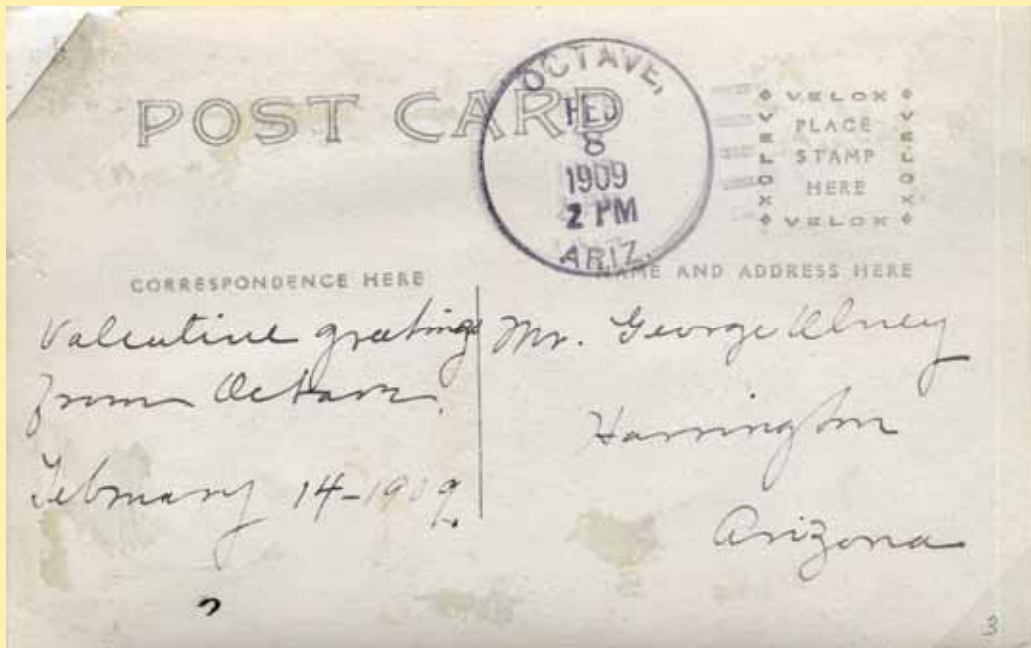
Town	Type	Postmark Code	Octave	Yavapai Co.	(1900—1943)
	1	C1bN1B28			
	2	C1bN1B29½			
	3	4-Bar			

Octave Yavapai County U. S. G. S. Map, 1923

In T. 9 N., R. 4 W. Mining camp and mine, on Weaver creek about 10 miles southeast of Congress. "So called because it was owned by eight men." P. O. established April 19, 1900, David J. Jones. P. M. First called Weaver, but as there already was a post office by that name, they called it Octave.



3



ORACLE

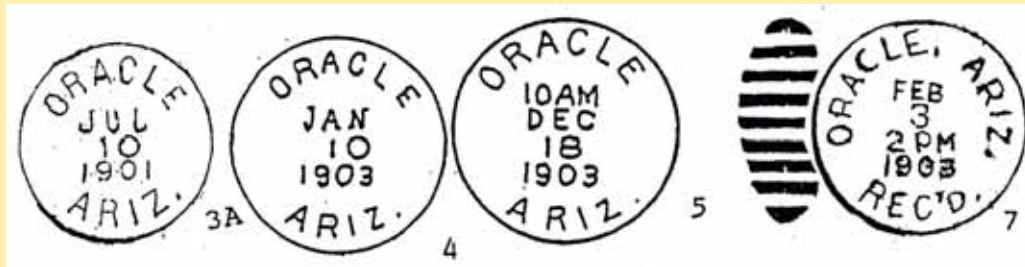
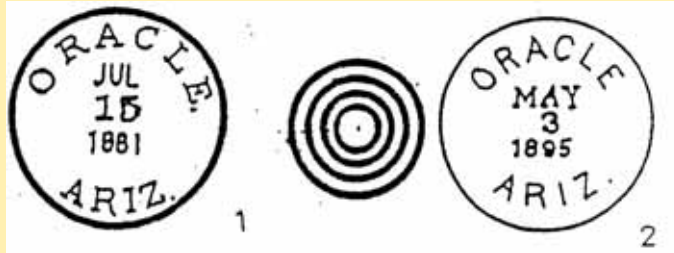


Arizona Territorial Postmarks

Town	Type	Postmark Code	Oracle	Pinal Co. (1887-1892)
	1	C211bNRRB28		
	2	C1bN1BBR26½		
	3	M		
	3A	C1bN1B26		
	4	C1bN1BBR28		
	5	C1bT1B29		
	6	St. Line (Registered)		
	7	C1bT1B28		

Oracle Pinal County U. S. G. S. Map, 1923; Coronado N. F., 1925.

In T. 9 S., R. 15 W. Town at northern end Santa Catalina's. "Alexander McKay, who first prospected the region, says name Oracle was given to the mine southwest of village by Weldon who in 1875 came around Cape Horn on a ship named "the Oracle." Many years later, a post office was desired at this point, then known as Acadia ranch. A neighboring ranch was called "American Flag." Government instructed both ranches to get together on one name. Oracle was chosen." Letter, Franck C. Lockwood, Tucson. P. O. established December 28, 1880. James Branson, P. M.

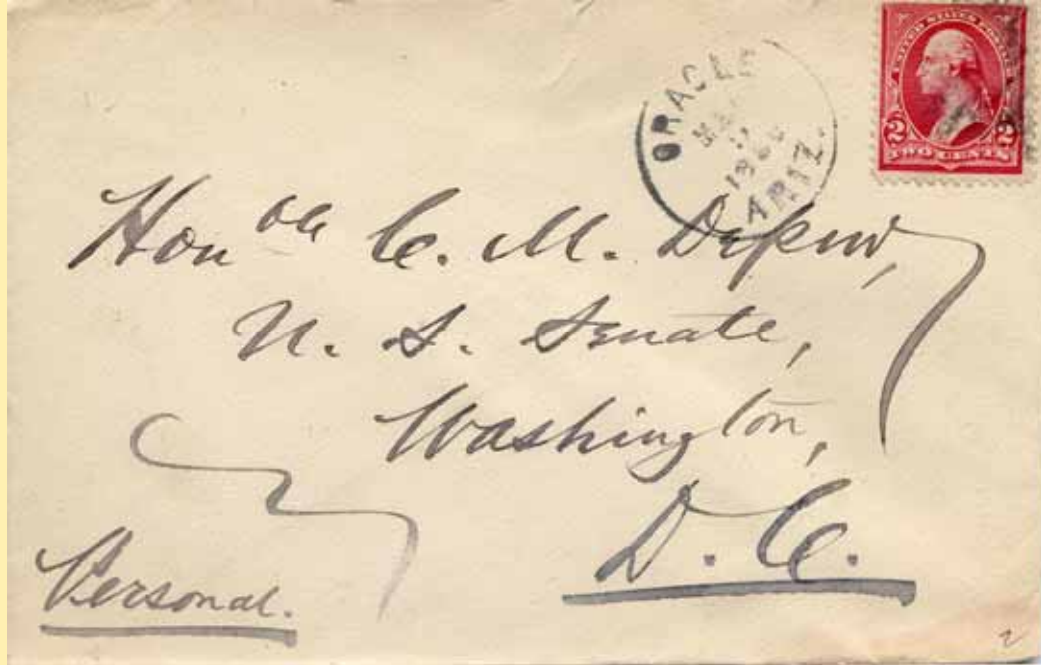


ORACLE

2 & 4



Arizona Territorial Postmarks

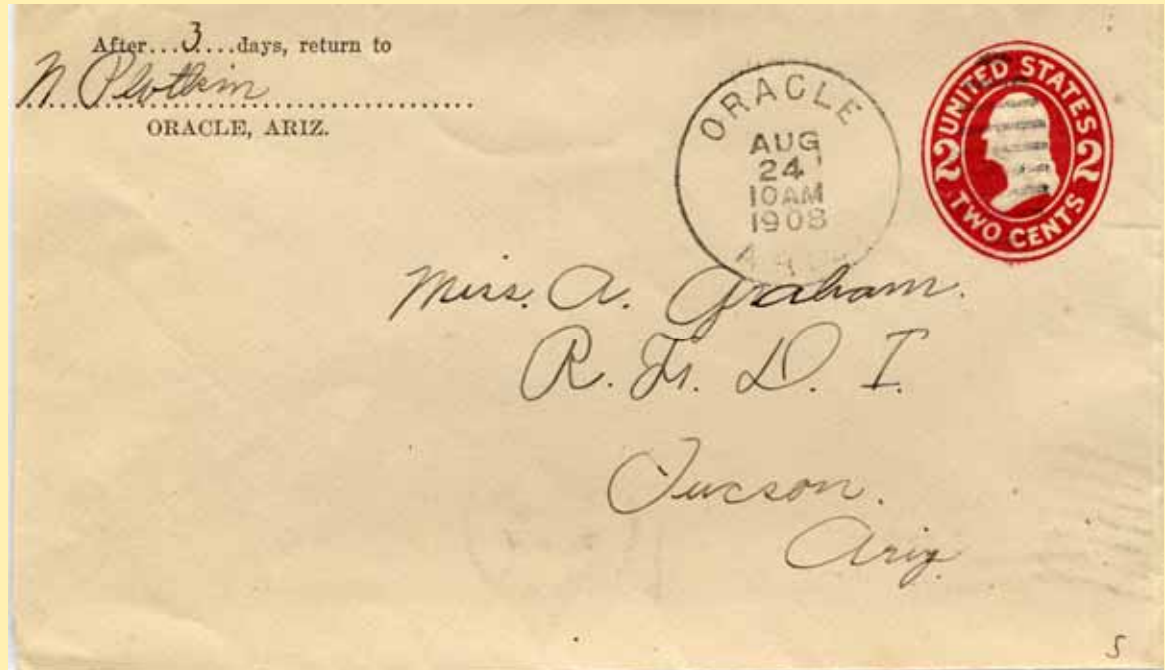


ORACLE

5



Arizona Territorial Postmarks



8/24/1908 Oracle, Arizona

Miss. A. Graham Oracle Arizona 1908
R.F.D.1.
Tucson, Arizona

Miss. Graham, Dear Friend, It is a long time we have not heard from you. Mrs. Hill is telling us you are not feeling well. I hope by this time you are all right again. She also told us you have a customer for some lots. It is very kind of you to take such an interest in us. I thank you very much. Lots were worth at the time we left \$200 and \$250 and now we don't know what they are worth. If you will let us know what lots they want we will send you the price. We expect to go home the 7 or 8 of next month. Hope to see you well. Ruby is feeling good now. Mr. Plotkin is not feeling good at all he did not improve this summer at all. Best regards from Ruby and Mr. Plotkin. Your friend Fannie Plotkin.

ORACLE

5



Arizona Territorial Postmarks



Oracle Aug, Aug, 22 1863
Miss Graham,
Dear friend,
It is a long time we have not heard from you. Mrs. Hill is telling me you are not feeling well. I hope by this time you are all right again. She also told me you have a cold now for some days. It is very kind of you to take such an interest in me. I thank you very much. Lots was worth at the time we left \$8.00 and \$8.50 and now we don't know what they are worth. If you will let us know what lots they want we will send you the price. We expect to go home the 1st of Sept must hope to see you well. Ruby is feeling good however Mr. Plotkin is not feeling good at all he did not improve this summer at all. Best regards from Ruby and Mr. Plotkin.
Your friend
Francis Plotkin

Oraibi



Town

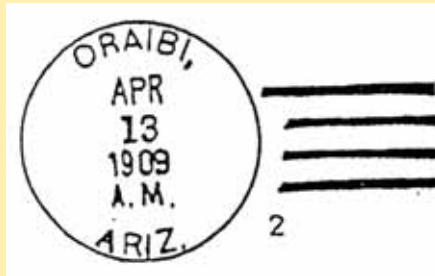
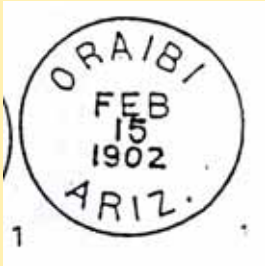
Type Postmark Code Oraibi Navajo Co. (1901—1982)

1 C1bN1B28

2 4-Bar

Oraibi Navajo County G. L. O. Map, 1921, U. S. G. S., 1923.

In T. 29 N., R. 16 E. One of the several Hopi pueblos; on "third," or west mesa, Hopi word said to mean "eagle traps." On Oraiba wash, Hopi Indian Reservation. P. O. established August 11, 1900, as Oraiba (sic). Later changed to Oraibi, Herman Kampmier, P. M. Decision U. S. G. B.



2



Arizona Territorial Postmarks

